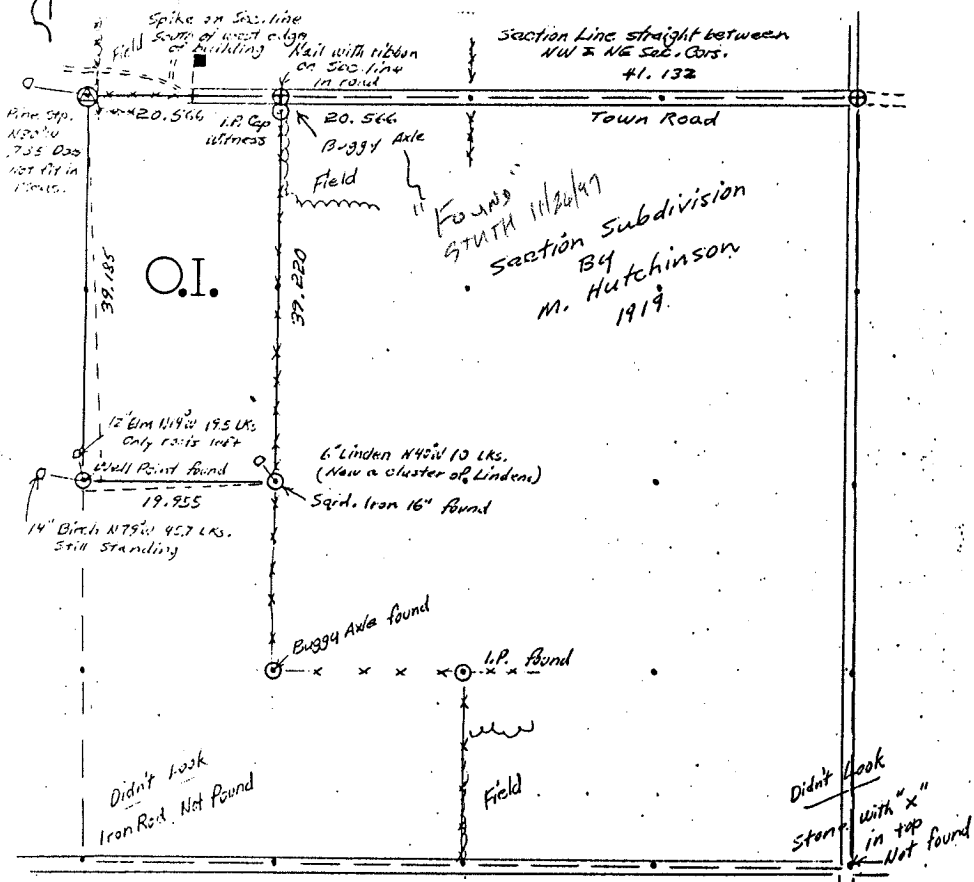


OWENS-ILLINOIS

DATE 8/12/77

T.32 N. R. 9 E SEC. 11

LANGLADE COUNTY, WIS.



All spikes & stakes set for corners were monumented in Sept. 1977

LEGEND CORNERS & LINES

- Iron Pipe or Cap
- ⊙ Concrete
- ⊕ Hood Post
- △ Stake
- X Hub
- ⊕ Spike

- True - Blazed - Painted
- True Cut - Blazed
- - - - Approximate - Painted
- Random
- xxxxx Fence
- - - - R. O. W.

MAP BY
Wm. H. Stutz
Survey By O.I.

Scale 1/2" = 1320.0'

PREPARED BY Wm. H. Stutz

DATE 11/23/82

B FILE

RECORD # 10426 10412

LANGLADE COUNTY SURVEYORS OFFICE

STATEMENT DATE FILED: 9/20/84 BY: D.T.

This survey was based on Hutchinsons subdivision survey of 1919 and corners found that he set at that time, and old fence lines that matched his measurements.

See Cty Cor. Restoration forms for details

RECORDS EXAMINED _____ DWG. NO. _____

<i>Org. Gov't. notes & plat</i>	<i>Cty. Surv. Office</i>
<i>M. Hutchinson notes</i>	<i>" " "</i>

LOCAL CONTACTS _____

<i>Cty. Hwy. Dept.</i>	<i>(Nothing to offer)</i>
<i>Town Clerk</i>	<i>" " "</i>
<i>Neighbors</i>	<i>" " "</i>

REMARKS _____