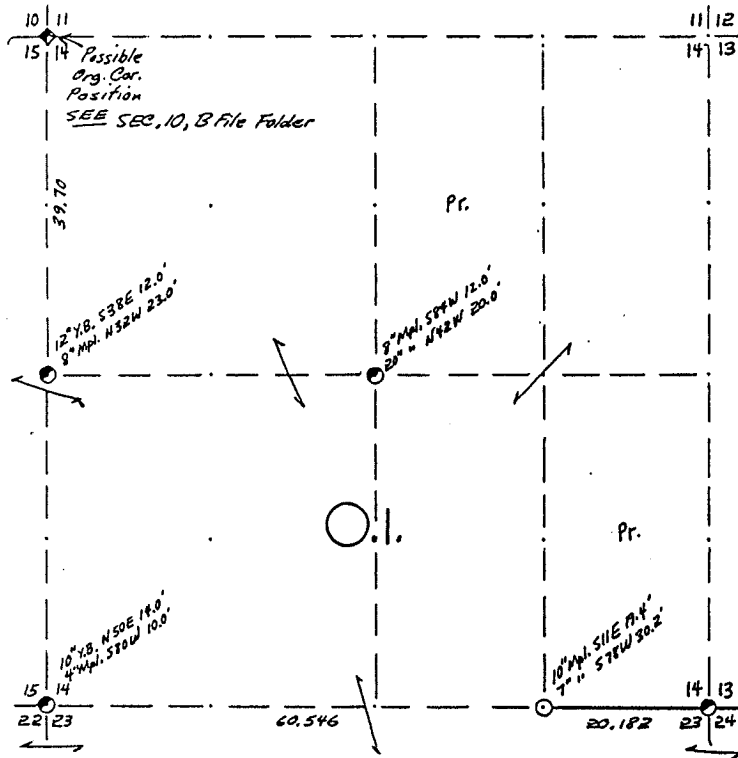


SEC. 14, T.32 N., R.13 E.,
LANGLADE COUNTY, WIS.



COR. BT. CODE
A-B-C-D-E
F-G-H-I-J
K-L-M-N-O
P-Q-R-S-T
U-V-W-X-Y

SCALE:
0 5 10 20 CHAINS
0 330 660 1320 FEET

LEGEND: CORNERS & LINES
 ○ IRON PIPE OR CAP --- BLAZED - PAINTED
 ⊙ CONCRETE --- BLAZED
 ⊕ POST --- APPR. PAINTED
 △ STAKE --- RANDOM
 + SPIKE --- FENCE
 ○ BY OTHERS

Surveyed 1972

OWENS-ILLINOIS
TOMAHAWK WISCONSIN
FOREST PRODUCTS DIVISION
Ownership Boundary Survey
DRAWN BY W.H. Stuth
DATE 2/11/87

B FILE

RECORD # ~~10443~~ 10405

LANGLADE COUNTY SURVEYORS OFFICE

DATE FILED: 9/20/94 BY: D.T.

STATEMENT Transit & Chain Surv. of south
sec. line using corners found

RECORDS EXAMINED _____ DWG. NO. _____

Org. Surv.
County records

LOCAL CONTACTS _____

REMARKS _____

Prepared By W.H. Stuth 3/5/87