

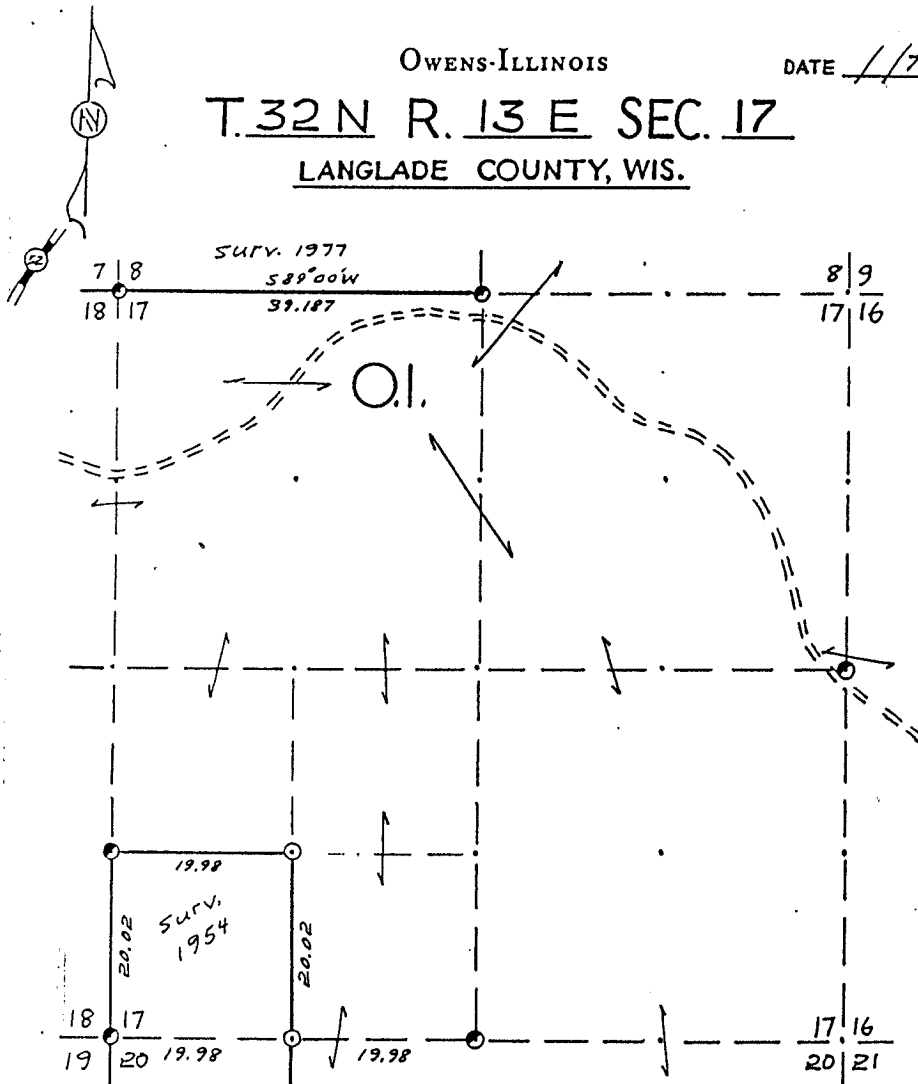
NW-571

OWENS-ILLINOIS

DATE 1/77

T.32 N R. 13 E SEC. 17

LANGLADE COUNTY, WIS.



LEGEND CORNERS & LINES

- Iron Pipe or Cap
- ⊙ Concrete
- ⊕ Wood Post
- △ Stake
- X Hub
- + Spike
- By Others

- True-Blazed-Painted
- True Cut - Blazed
- Approximate - Painted
- Random
- xxxxx Fence
- - - R. O. W.

MAP BY
W. H. Stuth
Survey By O.I.

Scale $1\frac{1}{2}'' = 1320.0'$

RECORD # 10404

B FILE

LANGLADE COUNTY SURVEYORS OFFICE

DATE 9/19/94 BY D.T.

STATEMENT Transit & Chain Surv. using existing corners found

RECORDS EXAMINED _____ DWG. NO. _____

Org. Surv.
County records

LOCAL CONTACTS _____

REMARKS _____

Prepared By W. H. Stuth 3/5/87