

RECORD # 10403

B FILE

LANGLADE COUNTY SURVEYORS OFFICE

DATE FILED 9/19/94 BY D.T.

STATEMENT Compass & Chain using fences

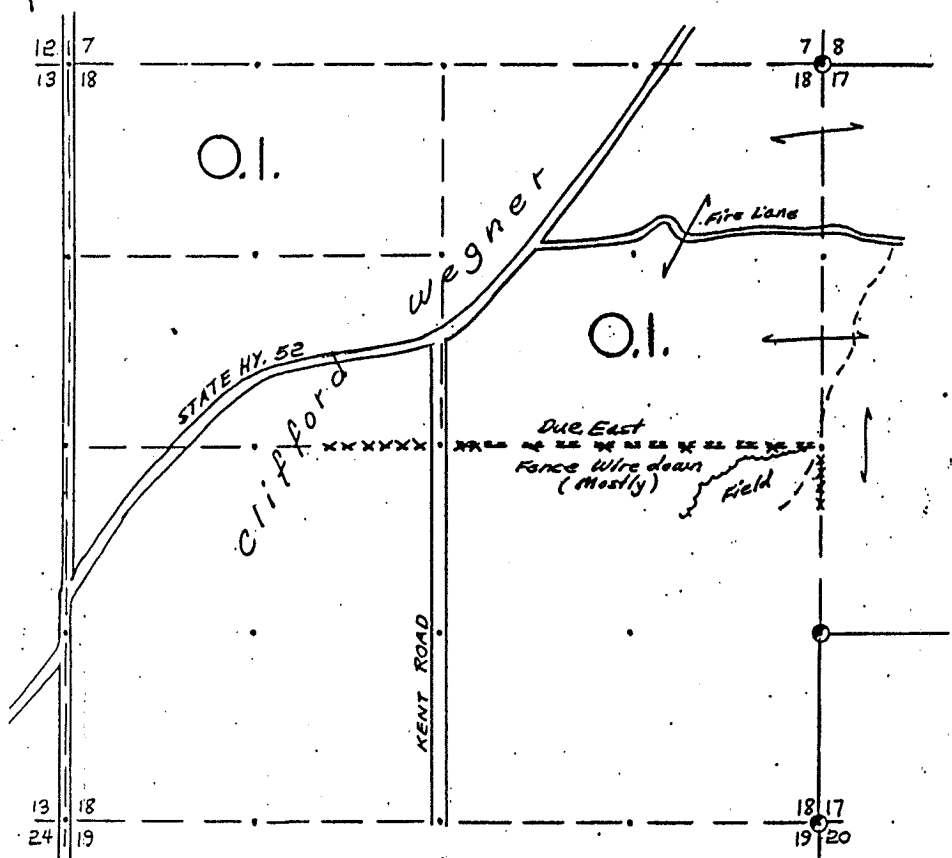
OWENS-ILLINOIS

DATE 12/9/76

T.32N R.13E SEC.18

LANGLADE COUNTY, WIS.

Mag. Bear.



LEGEND CORNERS & LINES

- | | | |
|--------------------|-----------------------|------------------------|
| ○ Iron Pipe or Cap | True-Blazed-Painted | MAP BY |
| ⊙ Concrete | True Cut - Blazed | W. H. Stuth |
| ⊠ Wood Post | Approximate - Painted | Survey By O.I. |
| △ Stake | Random | Stuth & Ebert |
| X Hub | Fence | Compass-Chain |
| + Spike | R.O.W. | Scale 1 1/2" = 1320.0' |
| ○ By Others | | |

RECORDS EXAMINED _____ DWG. NO. _____

None

LOCAL CONTACTS _____

REMARKS _____

Prepared By W.H. Stuth 3/5/87