

RECORD # 10402

B FILE

LANGLADE COUNTY SURVEYORS OFFICE

DATE FILED: 9/19/94 BY: P.T.

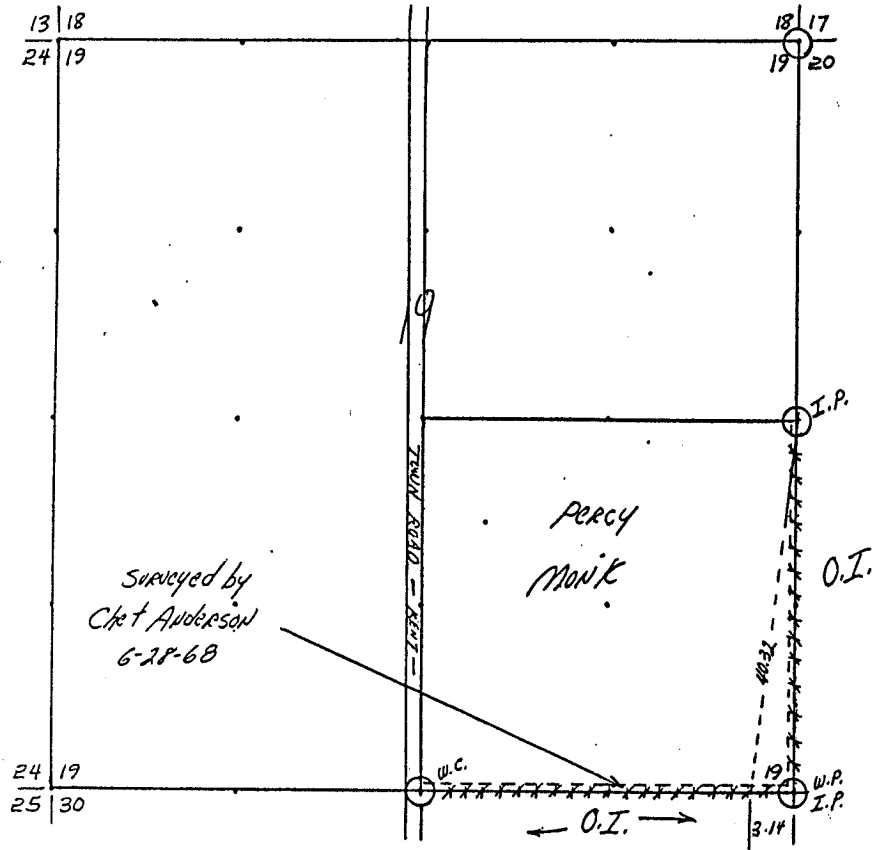
STATEMENT Compass & Chain using fences & corners

OWENS-ILLINOIS

DATE 7-17-73

T. 32N R. 13E SEC. 19

LANGLADE COUNTY, WIS.



Surveyed by
Chet Anderson
6-28-68

LEGEND CORNERS & LINES

- ⊙ Iron Pipe or Cap
- ⊙ Concrete
- ⊕ Wood Post
- △ Stake
- × Hub
- + Spike
- True-Blazed-Painted
- True Cut-Blazed
- - - - - Approximate-Painted
- Random
- xxxxx Fence
- . - . - R. O. W.

MAP BY

T. Apple

Scale $1\frac{1}{2}'' = 1320.0'$

RECORDS EXAMINED _____ DWG. NO. _____

Org. Surv.
County records

LOCAL CONTACTS _____

REMARKS _____

Prepared By W. H. Smith 3/5/87