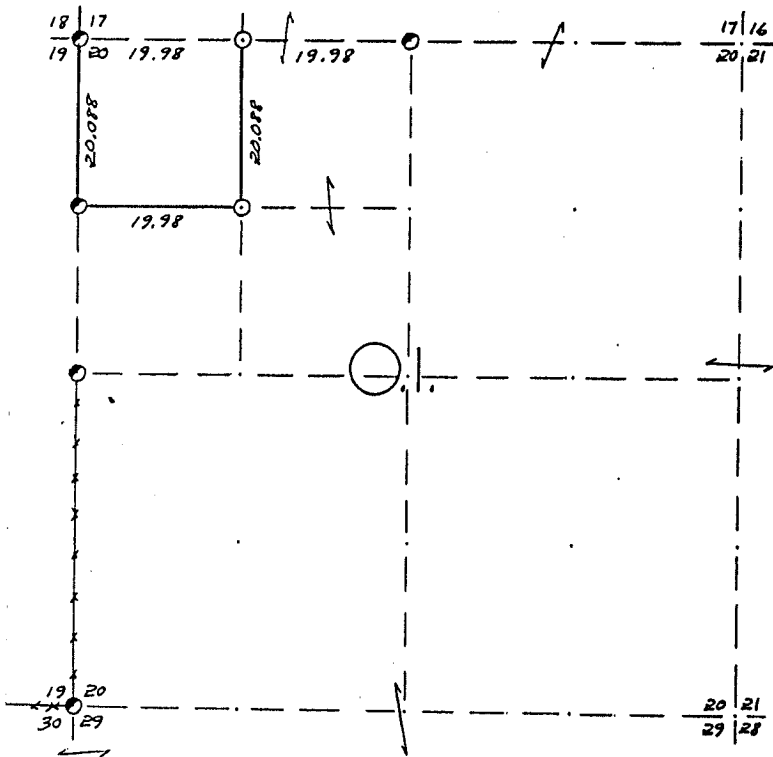


SEC. 20, T.32 N., R. 13 E.,  
LANGLADE COUNTY, WIS.



COR. ST. CODE  
A-B-C-D-E  
F-G-H-I-J  
K-L-M-N-O  
P-Q-R-S-T  
U-V-W-X-Y

SCALE:  
0 5 10 20 CHAINS  
0 330 660 1320 FEET

LEGEND: CORNERS & LINES

- IRON PIPE OR CAP
- CONCRETE
- ⊕ POST
- △ STAKE
- † SPIKE
- BY OTHERS
- BLAZED - PAINTED
- BLAZED
- APPR. - PAINTED
- RANDOM
- FENCE

Surveyed 1954

**OWENS-ILLINOIS**  
TOMAHAWK WISCONSIN  
FOREST PRODUCTS DIVISION

*Ownership Boundary Survey*  
DRAWN BY *W.H. Stuth*  
DATE *2/10/87*

RECORD # 104409 10401

LANGLADE COUNTY SURVEYORS OFFICE

DATE FILED: 9/19/94 BY: D.T.

**B FILE**

STATEMENT Transit & Chain Surv. using corners found

RECORDS EXAMINED \_\_\_\_\_ DWG. NO. \_\_\_\_\_

Orig Surv.  
County records

LOCAL CONTACTS \_\_\_\_\_

REMARKS \_\_\_\_\_

Prepared By W.H. Stuth 3/5/87