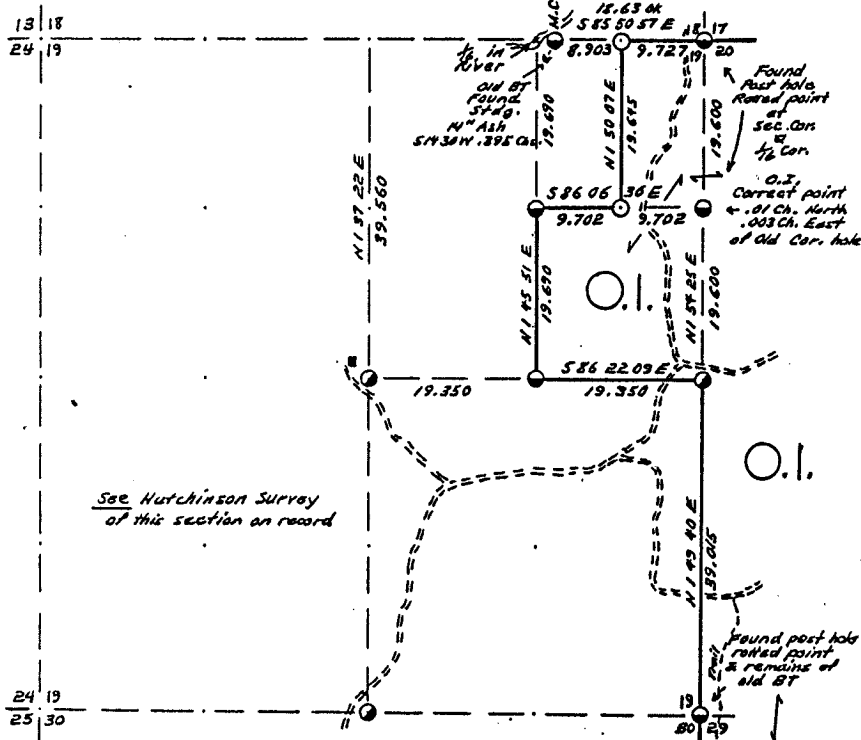


SEC. 19, T.33 N., R. 13 E.,
LANGLADE COUNTY, WIS.



See Hutchinson Survey
of this section on record

COR. BT. CODE	
A-B-C-D-E	N 52° NE-NE
F-G-H-I-J	8" Spr. N 55W 26.2'
K-L-M-N-O	7" Cedar SSE 85.8'
P-Q-R-S-T	S 32° NE-NE
U-V-W-X-Y	6" Bal S 62 E 14.5'
	7" N 27W 18.3'

SCALE:
0 5 10 20 CHAINS
0 330 660 1320 FEET

LEGEND: CORNERS & LINES

- IRON PIPE OR CAP
- ⊙ CONCRETE
- ◆ POST
- △ STAKE
- † SPIKE
- ⊙ CTY. CAPS Found
- " " Set H.S. Surv.
- BLAZED - PAINTED
- BLAZED
- APPR. - PAINTED
- RANDOM
- FENCE

Note
For BT's, get Cor. restoration
forms from Cty. Surveyor



Wm. H. Stuth

OWENS-ILLINOIS
TOMAHAWK WISCONSIN
FOREST PRODUCTS DIVISION

Boundary Survey

DRAWN BY W. H. Stuth

DATE 10/18/82

RECORD # 10395

B FILE

LANGLADE COUNTY SURVEYORS OFFICE

DATE FILED 9/19/94 BY D.T.

STATEMENT Transit & Chain Surv. using corners & evidence found

SEE note on map regarding BT's.

RECORDS EXAMINED _____ DWG. NO. _____

Org. Surv.

County records

LOCAL CONTACTS _____

REMARKS _____

Prepared By W.H. Stuth 3/5/87