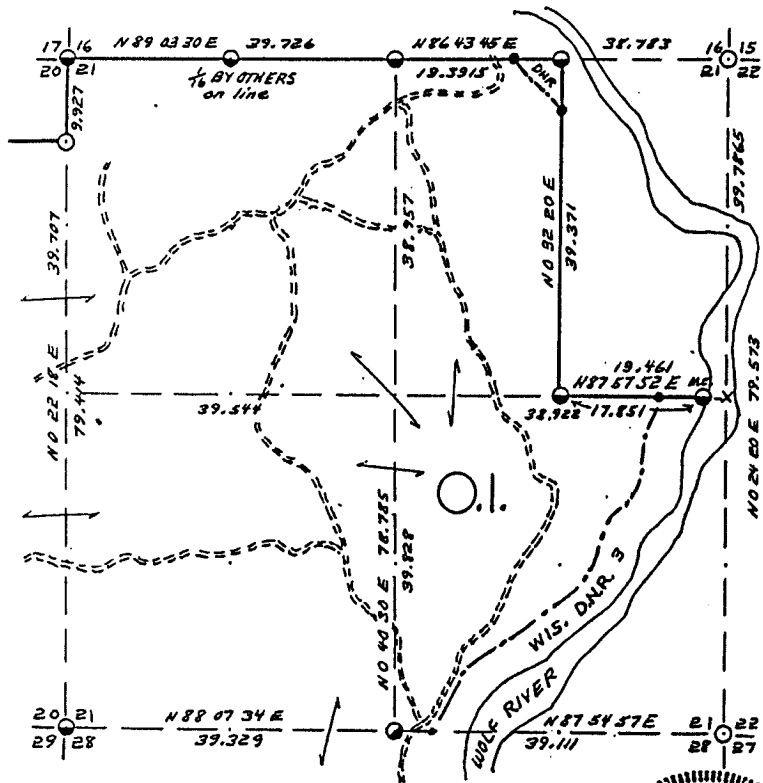
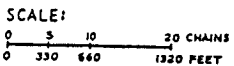


SEC. 21, T.33 N., R.13 E.,
LANGLADE COUNTY, WIS.



COR. BT. CODE	
A - B - C - D - E	1/2" NW-NW
F - G - H - I - J	1/8" Cherry S10W 2.2'
K - L - M - N - O	7" N.M. N75E 16.7'
P - Q - R - S - T	
U - V - W - X - Y	



- LEGEND: CORNERS & LINES
- IRON PIPE OR CAP
 - CONCRETE
 - ⊕ POST
 - △ STAKE
 - + SPIKE
 - County Cops Found
 - " " Set this Surv.
 - BLAZED - PAINTED
 - BLAZED
 - APPR. - PAINTED
 - RANDOM
 - FENCE

Notes
For B's get Con. restoration forms from City Surveyor

This 1982 Survey completes & corrects 1972 Survey. All lines & Cops. in the field have been adjusted.



Wm. H. Stuth

OWENS-ILLINOIS
YONAHAVE WISCONSIN
FOREST PRODUCTS DIVISION

Boundary Survey
DRAWN BY *W.H. Stuth*
DATE 10/19/82

Prepared By W.H. Stuth 3/5/87

RECORD # 10393

B FILE

LANGLADE COUNTY SURVEYORS OFFICE

DATE FILED: 9/19/94 BY: D.T.

STATEMENT Transit & Chain Surv. using corners & evidence found

RECORDS EXAMINED _____ DWG. NO. _____

Org. Surv.
County records

LOCAL CONTACTS _____

REMARKS _____