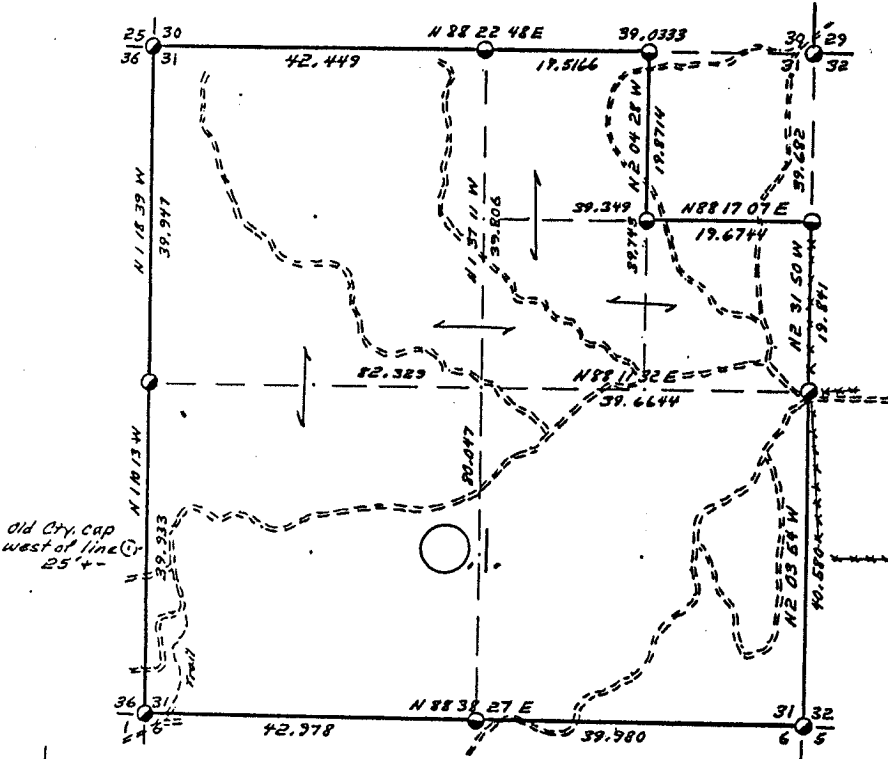


SEC. 31, T. 33 N., R. 13 E.,  
LANGLADE COUNTY, WIS.



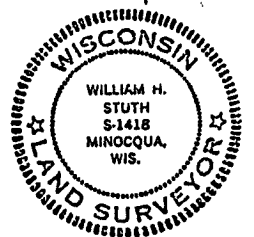
COR. BT. CODE

A	B	C	D	E
F	G	H	I	J
K	L	M	N	O
P	Q	R	S	T
U	V	W	X	Y

SCALE:  
0 5 10 20 CHAINS  
0 330 660 1320 FEET

- LEGEND: CORNERS & LINES
- IRON PIPE OR CAP
  - ⊙ CONCRETE
  - ⊕ POST
  - △ STAKE
  - ⊥ SPIKE
  - COUNTY CAP FOUND
  - BLAZED-PAINTED
  - BLAZED
  - APPR. PAINTED
  - RANDOM
  - FENCE

Note  
For Bt. get Cor. restoration forms  
from Cty. Surveyor.



OWENS-ILLINOIS  
TOMAHAWK WISCONSIN  
FOREST PRODUCTS DIVISION

Boundary Survey  
DRAWN BY W.H. Stuth  
DATE 10/18/82

Prepared By W.H. Stuth 3/5/87

RECORD # 10388

B FILE

LANGLADE COUNTY SURVEYORS OFFICE

DATE FILED: 9/19/94 BY: D.J.

STATEMENT Transit & Chain Surv. using corners  
found

RECORDS EXAMINED \_\_\_\_\_ DWG. NO. \_\_\_\_\_

Org. Surv.  
County records

LOCAL CONTACTS \_\_\_\_\_

REMARKS \_\_\_\_\_