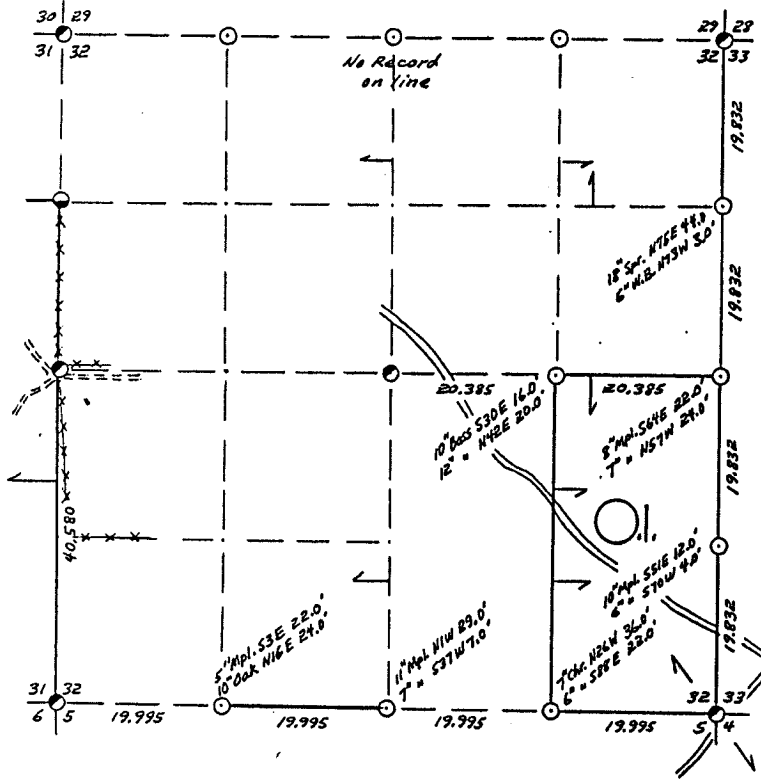
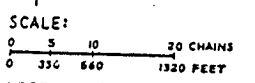


SEC. 32, T.33 N., R.13 E.,
LANGLADE COUNTY, WIS.



- COR. BT. CODE
A-B-C-D-E
F-G-H-I-J
K-L-M-N-O
P-Q-R-S-T
U-V-W-X-Y



- LEGEND: CORNERS & LINES
○ IRON PIPE OR CAP --- BLAZED-PAINTED
⊙ CONCRETE --- BLAZED
⊕ POST --- APPR. PAINTED
△ STAKE --- RANDOM
+ SPIKE --- FENCE
○ BY OTHERS
○ Cty. Surveyor Cor. Restoration - See Note Sec. 31 Map

Surveyed 1967

OWENS-ILLINOIS
TOWNSHIP OF WISCONSIN
FOREST PRODUCTS DIVISION

Ownership Boundary Survey
DRAWN BY W.H. Stuth
DATE 2/2/87

Prepared By W.H. Stuth 3/5/87

B FILE

RECORD # 10387
LANGLADE COUNTY SURVEYORS OFFICE

DATE FILED 9/19/94 BY D.T.
STATEMENT Transit & Chain Surv. using corners
found

RECORDS EXAMINED _____ DWG. NO. _____
Org. Surv.
County records

LOCAL CONTACTS _____

REMARKS _____