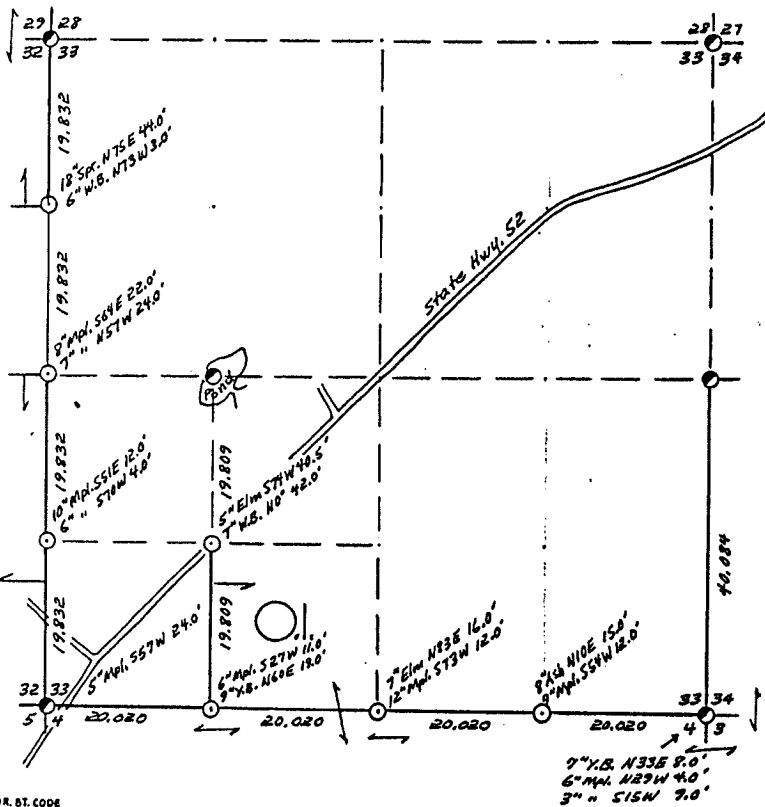


SEC. 33, T.33 N., R.13 E.,
LANGLADE COUNTY, WIS.



COR. BT. CODE
A-B-C-D-E
F-G-H-I-J
K-L-M-N-O
P-Q-R-S-T
U-V-W-X-Y

SCALE:
0 5 10 20 CHAINS
0 330 660 1320 FEET

LEGEND: CORNERS & LINES
 ○ IRON PIPE OR CAP --- BLAZED - PAINTED
 ⊙ CONCRETE --- BLAZED
 ⊕ POST --- APPR. PAINTED
 △ STAKE --- RANDOM
 + SPIKE --- FENCE
 ⊙ BY OTHERS

Surveyed 1972

OWENS-ILLINOIS
YOKUMBE (I) INCORPORATED
FOREST PRODUCTS DIVISION

Ownership Boundary Survey
DRAWN BY *W.H. Stuth*
DATE *2/2/87*

Prepared By W.H. Stuth 3/5/87

RECORD # 10386

B FILE

LANGLADE COUNTY SURVEYORS OFFICE

DATE FILED: 9/19/94 BY: D.T.
Transit & Chain Surv. using corners

STATEMENT

Found

RECORDS EXAMINED _____

DWG. NO. _____

Org. Surv.

County records

LOCAL CONTACTS _____

REMARKS _____