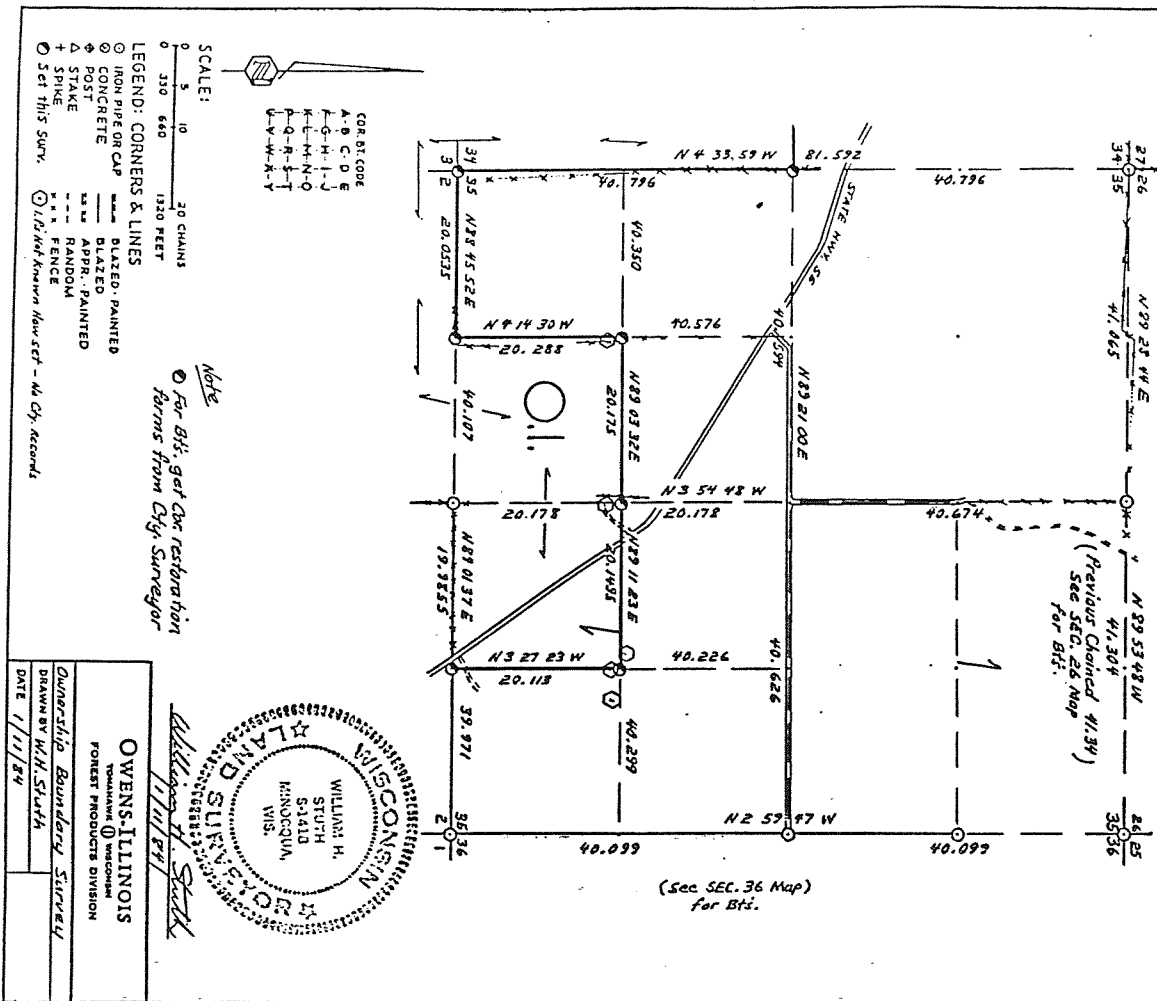


SEC. 35, T.33 N., R.13 E., LANGLADE COUNTY, WIS.



Prepared By W.H. Stuth 3/5/87

B FILE

RECORD # 10384

LANGLADE COUNTY SURVEYORS OFFICE

DATE FILED: 3/5/84 BY: D.T.

STATEMENT Transit & Chain Surv. using corners & evidence found

RECORDS EXAMINED _____ DWG. NO. _____
Ag. Surv.
County records

LOCAL CONTACTS _____

REMARKS _____