

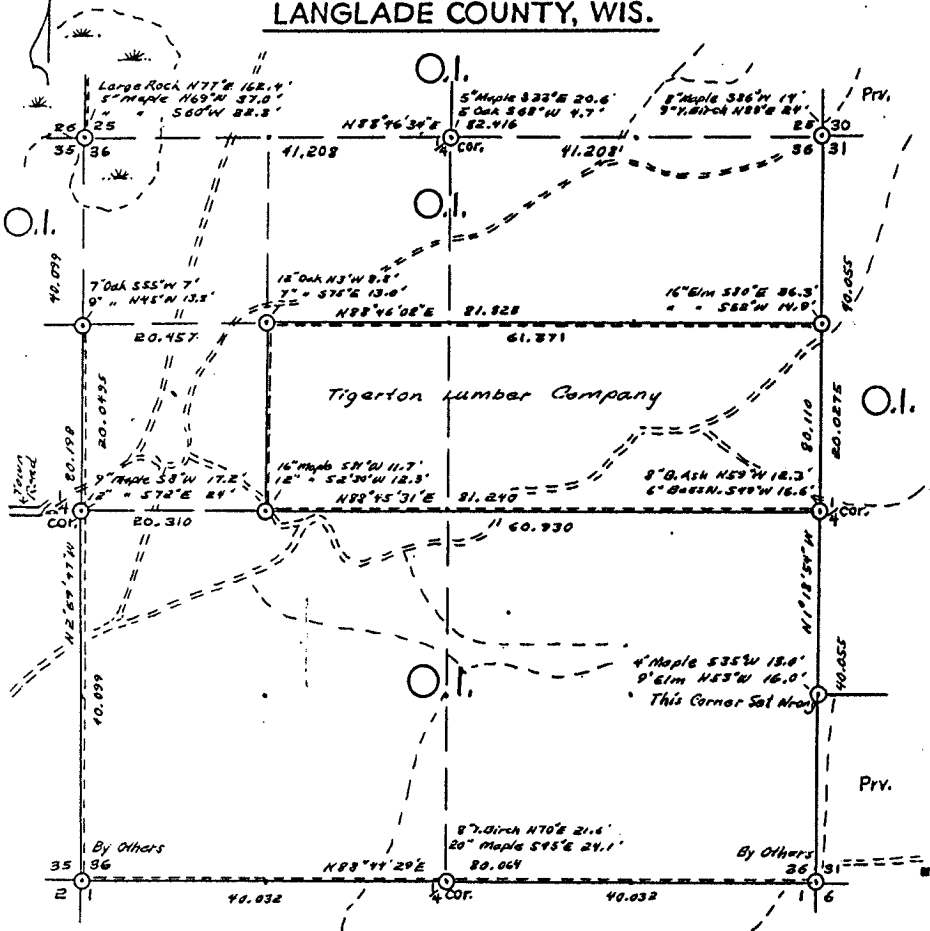
**B FILE**

OWENS-ILLINOIS

DATE 12/10/74

**T.33 N R. 13 E SEC. 36**

LANGLADE COUNTY, WIS.



STATEMENT Transit & Chain Surv. using corners & evidence found

RECORDS EXAMINED \_\_\_\_\_ DWG. NO. \_\_\_\_\_  
Org. Surv.  
County records

LOCAL CONTACTS \_\_\_\_\_

REMARKS \_\_\_\_\_

- |                                   |                             |                |
|-----------------------------------|-----------------------------|----------------|
| <b>LEGEND CORNERS &amp; LINES</b> |                             | <b>MAP BY</b>  |
| ○ Iron Pipe or Cap                | ----- True-Blazed-Painted   | Wm. H. Stuth   |
| ⊙ Concrete                        | ----- True Cut - Blazed     | SURVEY BY O.I. |
| ⊕ Wood Post                       | ----- Approximate - Painted |                |
| △ Stake                           | ----- Random                |                |
| X Hub                             | xxxxx Fence                 |                |
| + Spike                           | ----- R.O.W.                |                |

Scale  $1\frac{1}{2}'' = 1320.0'$

Prepared By W. H. Stuth 3/5/87