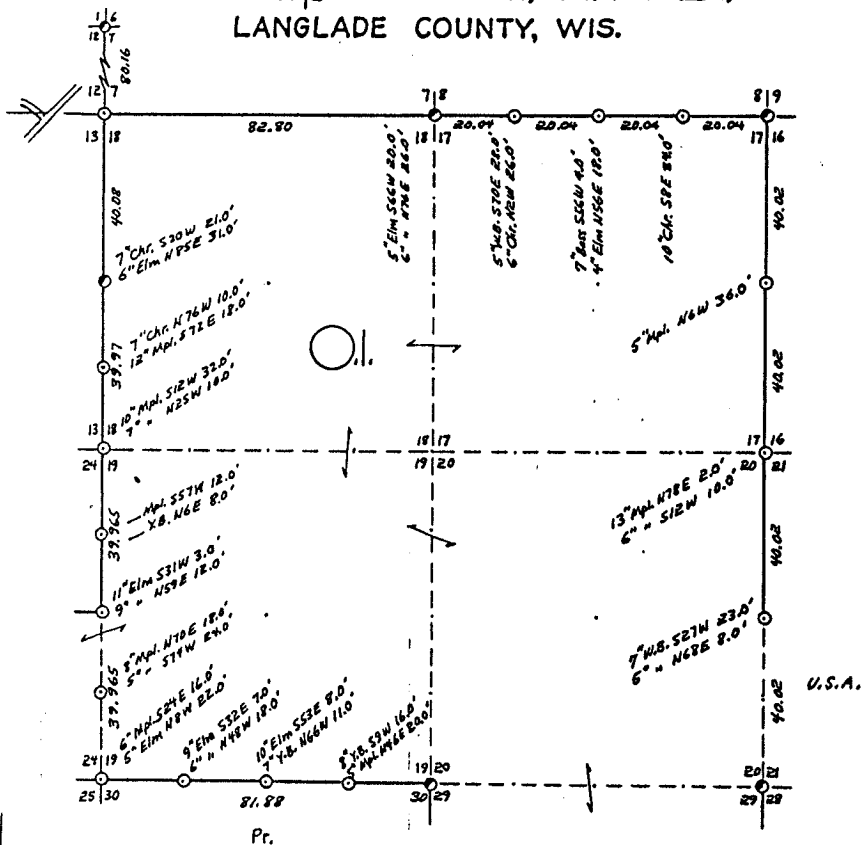


SEC. $\frac{18}{19}$ | $\frac{17}{20}$ T.33 N., R.14 E.,
LANGLADE COUNTY, WIS.



- COR. BY CODE
A - B - C - D - E
F - G - H - I - J
K - L - M - N - O
P - Q - R - S - T
U - V - W - X - Y

SCALE:
0 5 10 20 CHAINS
0 330 660 1320 FEET

LEGEND: CORNERS & LINES

- IRON PIPE OR CAP — BLAZED - PAINTED
 ⊙ CONCRETE — BLAZED
 ⊕ POST — APPR. - PAINTED
 △ STAKE — RANDOM
 + SPIKE
 ○ BY OTHERS — FENCE

Surveyed 1960's

OWENS-ILLINOIS
 TOMAHAWK & SMOOK
 FOREST PRODUCTS DIVISION

Ownership Boundary Survey

DRAWN BY *W.H. Stuth*
 DATE 1/30/87

Prepared By W.H. Stuth 3/5/87

B FILE

RECORD # 10382

LANGLADE COUNTY SURVEYORS OFFICE

DATE FILED: 9/19/94 BY: D.T.

STATEMENT Transit & Chain Surv. using Corners
found

RECORDS EXAMINED _____ DWG. NO. _____

Org. Surv.
County records

LOCAL CONTACTS _____

REMARKS _____