

NW-3/4

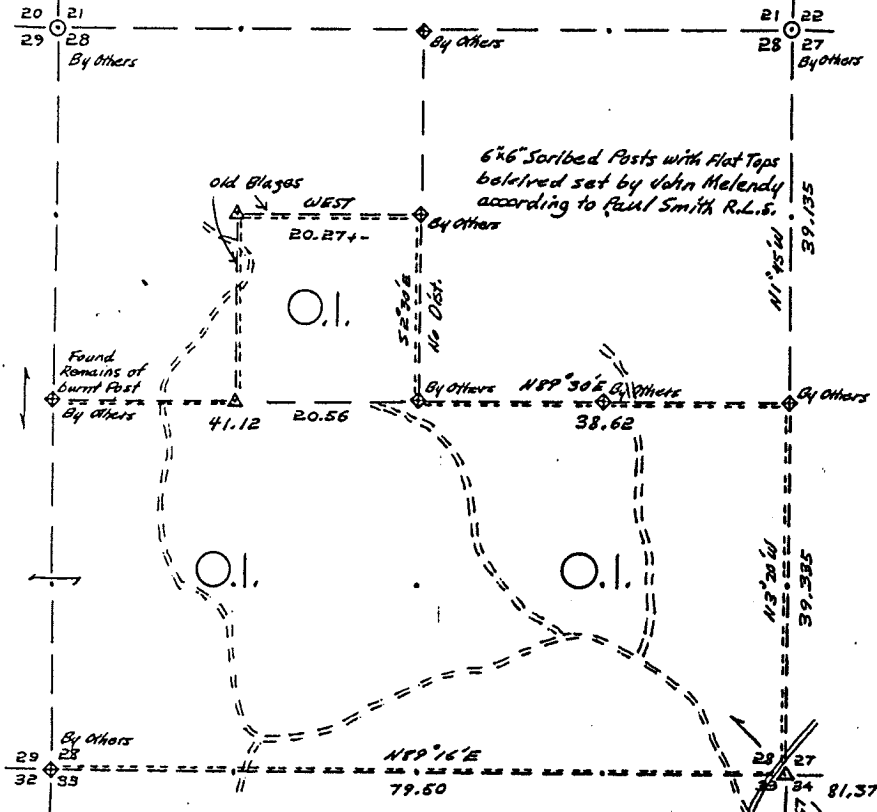
OWENS-ILLINOIS

DATE 1/8/79

T.33 N R. 14 E SEC. 28

LANGLADE COUNTY, WIS.

Approximate Survey by Compass & Chain



- LEGEND CORNERS & LINES
- Iron Pipe or Cap
 - ⊙ Concrete
 - 6"x6" ⊠ Wood Post Scribed
 - △ Stake Cedar-Approx.
 - X Hub
 - + Spike
 - True-Blazed-Painted
 - True Cut-Blazed
 - - - - - Approximate-Painted
 - Random
 - xxxxx Fence
 - - - - - R. O. W.
- MAP BY
W. H. Sutter
Survey by
Owens-Illinois
- Scale 1 1/2" = 1320.0'

B FILE

RECORD # 10381

LANGLADE COUNTY SURVEYORS OFFICE

DATE FILED: 9/19/94 BY: DT.

STATEMENT Compass & Chain Surv. using existing corners found

RECORDS EXAMINED _____ DWG. NO. _____

Org. Surv.
County records

LOCAL CONTACTS _____

REMARKS _____

Prepared By W. H. Sutter 3/5/87