

RECORD # 10379

**B FILE**

LANGLADE COUNTY SURVEYORS OFFICE

DATE FILED: 9/19/94 D.T.

STATEMENT Compass & Chain Surv. using corners & evidence found

OWENS-ILLINOIS

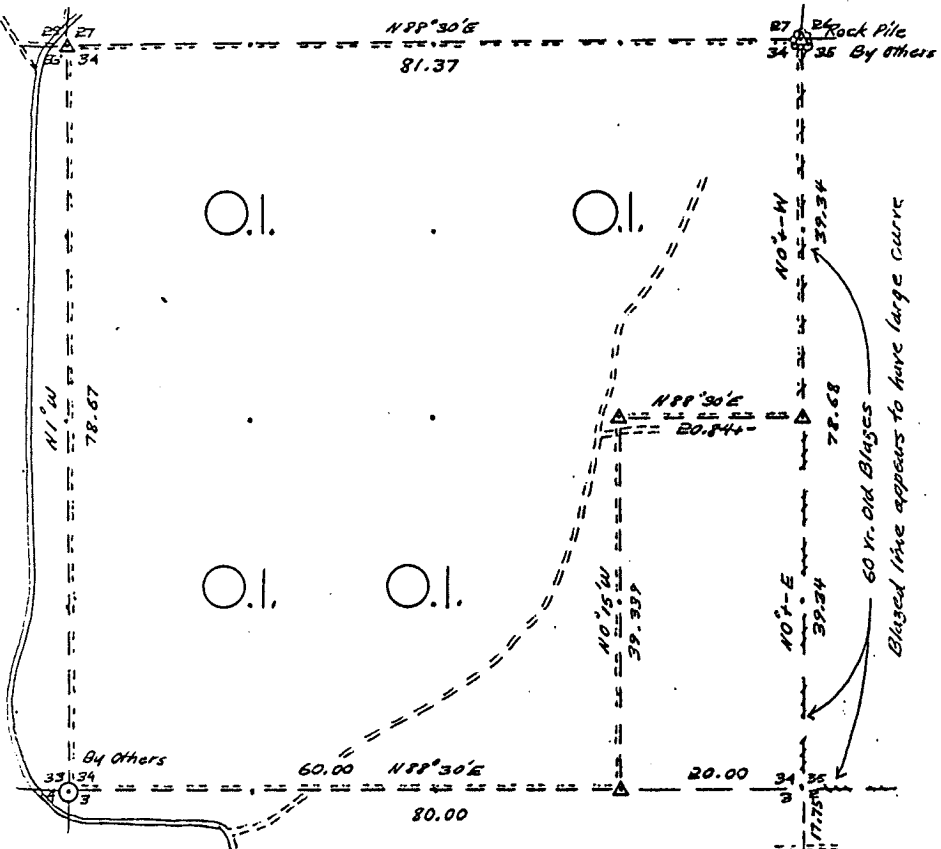
DATE 1/8/79

**T.33 N R. 14 E SEC. 34**

**LANGLADE COUNTY, WIS.**

*Approximate Survey by Compass & Chain*

*Magnetic Bearings*



**LEGEND CORNERS & LINES**

- Iron Pipe or Cap
- ⊙ Concrete
- ⬢ Wood Post
- △ Stake Cedar - Approx.
- X Hub
- + Spike
- 

- True - Blazed - Painted
- True Cut - Blazed
- Approximate - Painted
- Random
- xxxxx Fence
- R. O. W.

MAP BY  
W. H. Stutth  
Survey By  
Owens, Illinois

Scale  $1\frac{1}{2}'' = 1320.0'$

RECORDS EXAMINED \_\_\_\_\_ DWG. NO. \_\_\_\_\_

Org. Surv.  
County records

LOCAL CONTACTS \_\_\_\_\_

REMARKS \_\_\_\_\_

Prepared By W. H. Stutth 3/5/87