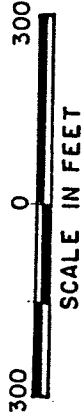
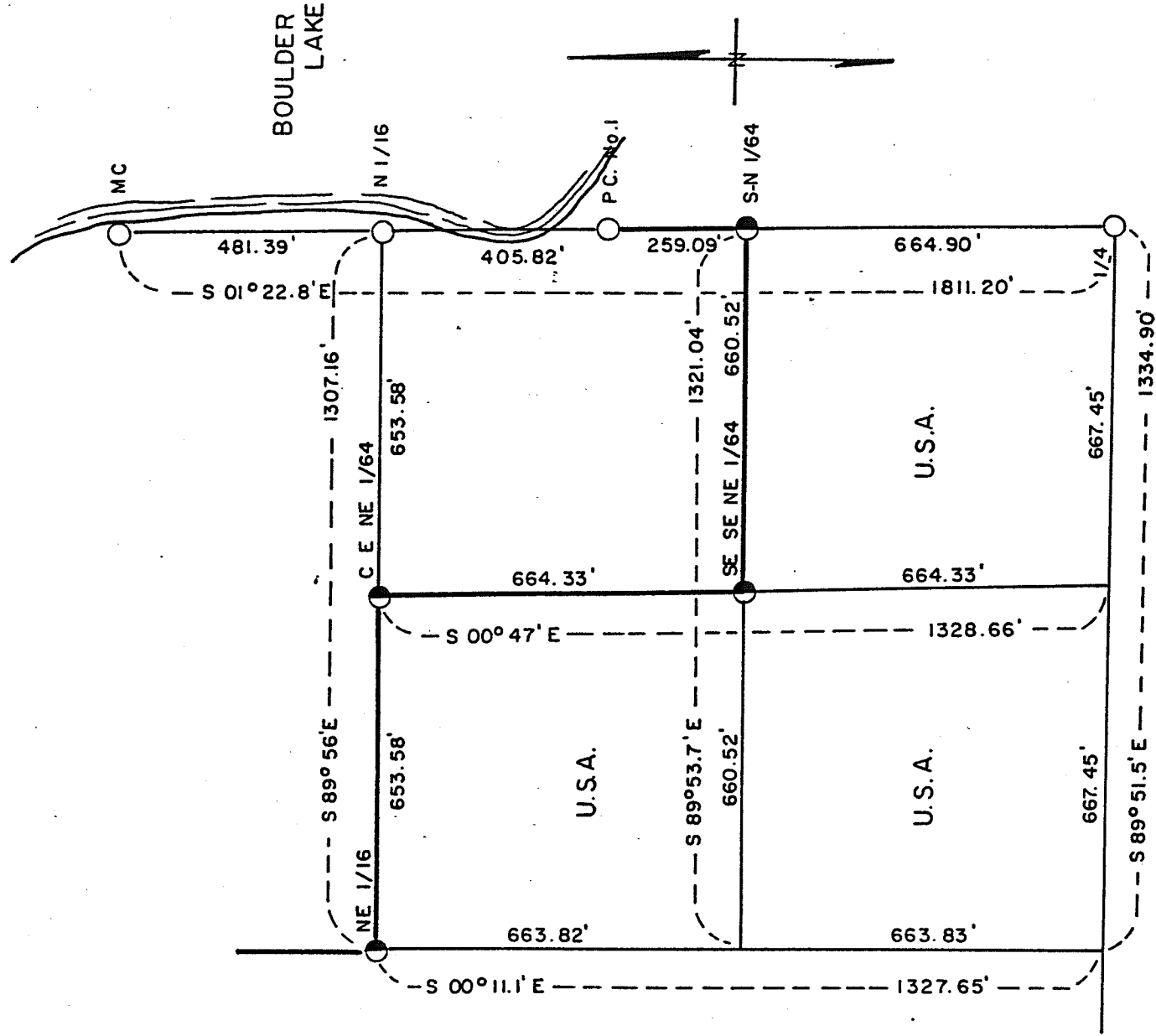




Sheet two of five

DETAIL OF SE 1/4 OF THE NE 1/4



Stock No. 26273

Sheet three of five

SURVEY NOTES

This survey was made by AARON ASSOCIATES of Oconto Falls, Wisconsin under contract with the U.S. Department of Agriculture, Forest Service for the purpose of establishing subdivisional corners within and on the perimeter of Section 29, and for locating and marking the boundaries of U.S. Government Lands on their perimeter and within Section 29, Township 31 North, Range 15 East, 4th Principal Meridian, Langlade County, Wisconsin.

The U.S. Government Lands were acquired in 1934, 1936, 1940, & 1952.

The Original Government survey of this township was made in 1857.

The corner positions established were located to an accuracy of one part in 3000.

The bearings between corner positions are True Bearings as determined by the U.S. Forest Service using solar observation.

The corner positions established by this survey are marked with monuments described in the map legend.

The field notes of this survey and a copy of the plat map are on file in the Forest Supervisor's Office at Rhineland, Wisconsin.

CORNERS RESTORED AND RECOVERED

1. Section Corner to Sections 19-20-29-30, T31N, R15E.  
Corner position found marked with a 2" diameter aluminum monument.  
Certificate on file in Langlade County courthouse.
2. Section Corner to Sections 28-29-32-33, T31N, R15E.  
Corner position found marked with a 2" diameter aluminum monument.  
Certificate on file in the Langlade County courthouse.
3. Section Corner to Sections 29-30-31-32, T31N, R15E.  
Corner position found marked with a 2" diameter aluminum monument.  
Certificate on file in the Langlade County courthouse.
4. Meander Corner Between Sections 20-29, T31N, R15E.  
Corner position found marked with a 2" diameter aluminum monument.  
Certificate on file in the Langlade County courthouse.
5. Quarter Corner to Sections 20-29, T31N, R15E.  
Corner position found marked with a 2" diameter aluminum monument.  
Certificate on file in the Langlade County courthouse.
6. Quarter Corner to Sections 28-29, T31N, R15E.  
Corner position found marked with a 2" diameter aluminum monument.  
Certificate on file in the Langlade County courthouse.

Stock No. 26273

Sheet four of five

7. Quarter Corner to Sections 29-32, T31N, R15E.

Corner position found marked with a 2" diameter aluminum monument.  
Certificate on file in the Langlade County courthouse.

8. Quarter Corner to Sections 29-30, T31N, R15E.

Corner position found marked with a 2" diameter aluminum monument.  
Certificate on file in the Langlade County courthouse.

9. West Sixteenth Corner Between Sections 20-29, T31N, R15E.

Corner position found marked with a 2" diameter aluminum monument.  
Plat of Sections 20 on file in Langlade County courthouse.

10. East Sixteenth Corner Between Sections 20-29, T31N, R15E.

Corner position found marked with a 2" diameter aluminum monument.  
Plat of Section 20 on file in the Langlade County courthouse.

11. North Sixteenth Corner Between Sections 28-29, T31N, R15E.

Corner position found marked with a 2" diameter aluminum monument.  
Plat of the encroachments in Sections 29 on file in the Langlade County courthouse.

12. Property Corner No. 1, Section 29, T31N, R15E.

Corner position found marked with a 2" diameter aluminum monument.  
Plat of encroachments in Section 29 on file in the Langlade County courthouse.

13. Meander Corner Between Sections 28-29, T31N, R15E.

Corner position found marked with a 2" diameter aluminum monument.  
Certificate on file in the Langlade County courthouse.

CORNERS ESTABLISHED14. Northeast Sixteenth Corner of Section 29, T31N, R15E.

Set this corner position at the straight line intersection point of  
sixteenth lines in the northeast quarter of Section 29 as computed  
by the Forest Service.

Corner references:

Double Oak	10"	N59E	24.25 ft.
Oak	5"	S20E	8.22 ft.
Oak	11"	N13W	17.33 ft.
Sign Post		West	3.10 ft.

15. Center-East-Northeast Sixtyfourth Corner of Section 29, T31N, R15E.

Set this corner at midpoint between the northeast sixteenth and north  
sixteenth corners of Section 29 according to Forest Service data.

Corner references:

Oak	8"	S46E	3.32 ft.
Red Maple	7"	S44W	18.64 ft.
Oak	11"	N49W	11.33 ft.
Sign Post		West	1.50 ft.

Stock No. 26273

Sheet five of five

16. Southeast-Southeast-Northeast Sixtyfourth Corner of Section 29, T31N, R15E.

Set this corner at the straight line intersection of sixtyfourth lines in the southeast quarter of the northeast quarter of Section 29 according to Forest Service data.

Corner references:

Oak	5"	N55E	6.04 ft.
Double Oak	7"	S30E	9.90 ft.
White Pine	5"	N53W	22.90 ft.
Sign Post		North	1.00 ft.

17. South-North sixtyfourth Corner Between Section 28-29, T31N, R15E.

Set this corner at the proportionate position between the east quarter and north sixteenth corners of Section 29, T31N, R15E according to Forest Service data.

Corner references:

Sugar Clump (4)	5"	N14E	27.86 ft.
Sugar Clump (3)	5"	S67E	18.30 ft.
Oak	12"	N56W	15.38 ft.
Sign Post		West	1.20 ft.

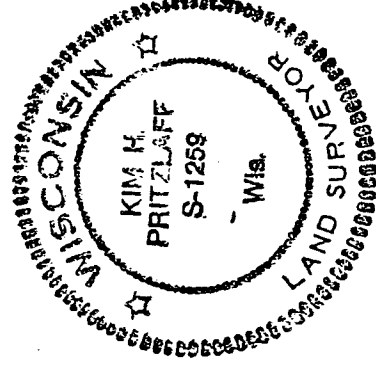
SURVEYOR'S AFFIDAVITSTATE OF WISCONSIN)  
COUNTY OF LANGLADE)SS

I, Kim H Pritzlaff, Registered Land Surveyor in the State of Wisconsin, hereby certify: that I have surveyed and subdivided Section 29, Township 31 North, Range 15 East, 4th Principal Meridian, Langlade County, Wisconsin.

The Plat map and notes herewith are a true and correct representation of the land surveyed and subdivided. I have surveyed and subdivided said section using Forest Service data and information with the rules of survey of the Public Lands and in accordance with the Statutes of the State of Wisconsin.

*Kim H. Pritzlaff*  
 Kim H Pritzlaff, RLS No. 1259  
 AARON ASSOCIATES  
 Oconto Falls, Wisconsin

Date of Survey: 1986.



Plat ready for filing

*James H. Kuehn*  
*Director*