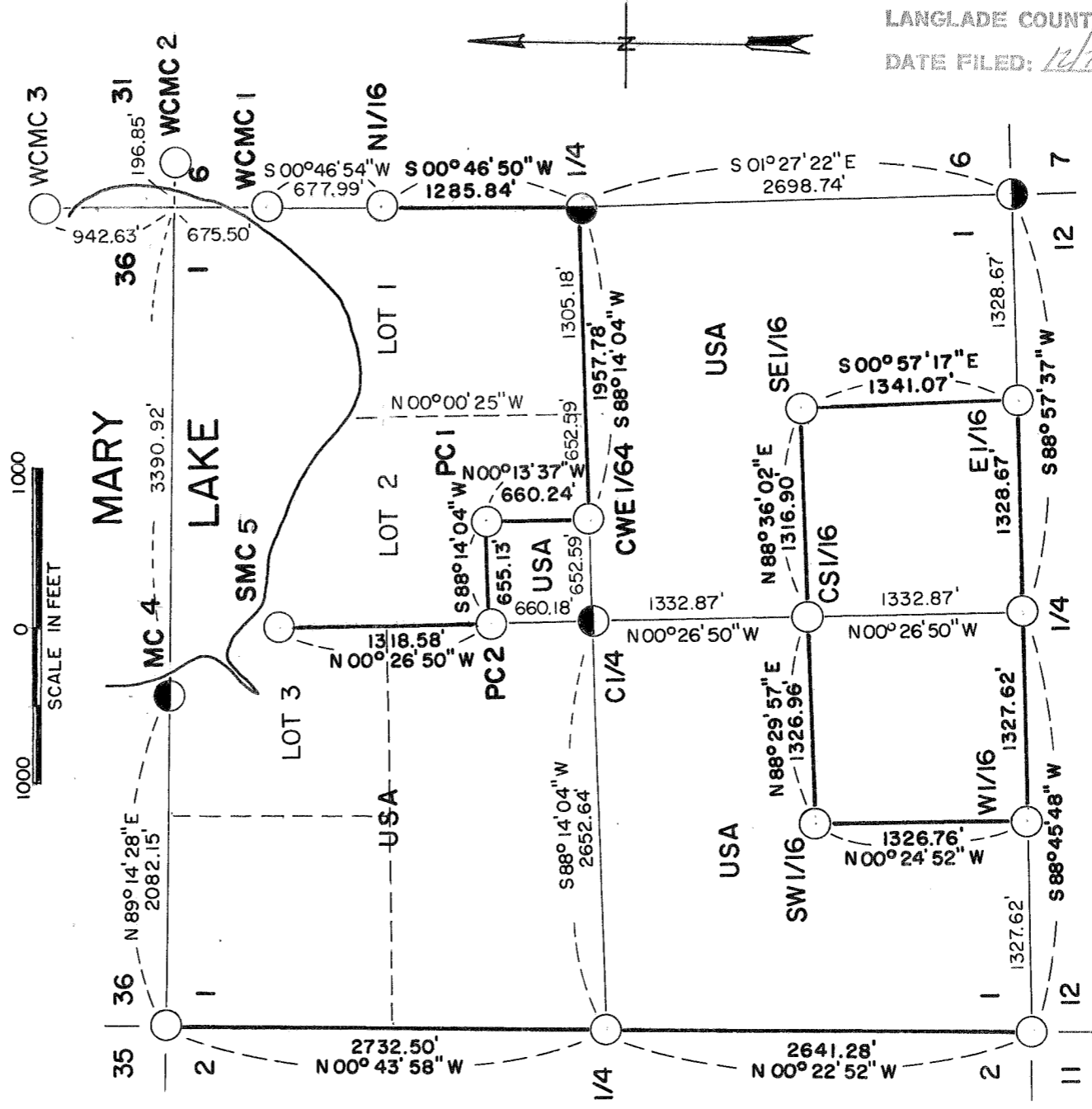
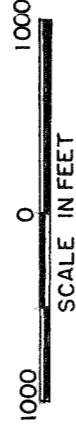


Stock No. 26273

Sheet one of seven

# PLAT OF SURVEY U.S. GOVERNMENT LAND

Being W1/2-SW1/4, SW1/4-SW1/4, N1/2-SE1/4, SE1/4-SE1/4,  
W1/2-South 660' of Gov't Lot 2, and NW1/4 all in Section 1  
Township 32 North, Range 14 East, Fourth Principal Meridian  
LANGLADE COUNTY, WISCONSIN.



RECORD # 10350  
LANGLADE COUNTY SURVEYORS OFFICE  
DATE FILED: 12/7/93 BY: D.T

### LEGEND

- 2" Diameter Aluminum monument 30" long
- 2" Diameter Aluminum monument 60" long
- 2" iron pipe with Brass cap
- 4" Diameter Oconto County monument

Marked Boundary Lines of US Government Lands

CONVERSION FACTOR:  
Feet to Meters = 0.30480  
Meters to Feet = 3.28083

**Stock No. 26273**

Sheet two of seven

SURVEY NOTES

This survey was made by AARON ASSOCIATES of Oconto Falls, Wisconsin under contract with the U.S.D.A., Forest Service, for the purpose of restoring and establishing corners on the perimeter of Section 1, for establishing subdivisional corners within Section 1, and for locating and marking boundaries of U.S. Government lands on their perimeter and within Section 1, Township 32 North, Range 14 East, Fourth Principal Meridian, Langlade County, Wisconsin.

The U.S. Government lands were acquired in the mid 1930s.

The original government survey of this township was made in 1857.

The corner positions recovered, restored, and established by this survey are marked by monuments described in the map legend.

The corner positions established were located to an accuracy of one part in 10,000.

The bearings between corner positions are true bearings as determined by solar observation.

The field notes of this survey and a copy of the Plat are on file in the Forest Supervisor's Office at Rhineland, Wisconsin.

CORNERS RECOVERED AND RESTORED

- A-25 1. Township Corner to T33N, R14E; T33N, R15E; T32N, R14E; and T32N, R15E.

This corner position was determined by the location of meander corner evidence found in all cardinal directions on the perimeter of Mary Lake. Accessories to these meander corners were perpetuated by Witness Corners to the Meander Corners described as follows:

WITNESS CORNER No. 1

A 1" iron pipe was located on the south shore of Mary Lake and witnessed by resident land owners as the iron set by Owen Smith, RLS, during a resurvey of the East line of Section 1 perpetuating Nathan Smith's survey of 1923. A square cedar post at the North sixteenth corner on the east line of said Section 1 fell in line with this iron pipe and the East quarter corner of said Section 1. I set an aluminum monument on this line and south of the 1" iron pipe on Mary Lake at a distance of 28.95 feet.

## WCMC corner references:

Red Maple	9"	N 28 E	22.70'
Red Maple	6"	N 79 E	5.05'
Red Maple	4"	S 39 E	51.72'
White Birch	10"	N 49 W	2.61'
7' Steel Sign Post		N 02 E	0.75'

Stock No. 26273

Sheet three of seven

WITNESS CORNER No. 2.

In 1918, J. Melendy, surveyor, recovered the meander corner on the east side of Mary Lake between Sections 31 and 6 and he made two new accessories to the meander corner. They were a Pine stump, 20" in diameter bearing N 82½E for 53 1/8 lks and another Pine stump, 14" in diameter bearing S 49 E for 32 lks. I recovered Melendy's 20" Pine stump which still had a scribe on it and relocated the meander corner from which I set the Witness Corner to the Meander Corner 40.00 ft. east.

## WCMC corner references:

Cedar	5"	N 09 E	8.85'
Cedar	5"	N 84E	46.80'
White Birch	10"	S 54 W	9.62'
7' Steel Sign Post		South	2.25'

WITNESS CORNER No. 3.

In 1923, Nathan Smith, surveyor, located this meander corner on the north side of Mary Lake between sections 31 and 36 from the original Pine bearing tree to the northeast. He set other bearing trees along the section line to the north for the sixteenth and quarter corners. These were all located and used to verify the meander corner. I set the Witness Corner to the Meander Corner 28.55 feet north and on line from the original meander corner.

## WCMC references:

Red Maple clump	7"	N 58 W	24.60'
White Birch	6"	N 60 E	18.05'
Red Pine	6"	S 70 E	30.05'
7' Steel sign Post		North	1.00'

MEANDER CORNER No. 4.

On the west side of Mary Lake I found and old cedar post point 18" under the swamp grass within 2 feet of where the single proportionate position for this corner fell. Beaver damage had eroded previous bearing tree evidence. I accepted this post point as the meander corner which was verified by the Hemlock line tree to the west which was called for in the government notes and found as a stump above ground.

## MC references:

Yellow Birch	8"	S 78 W	73.31'
Yellow Birch	8"	N 88 W	64.11'
Yellow Birch	8"	N 51 W	38.90'
8' Steel Sign Post		S 89 E	3.10'

E-25 2. Corner to Sections 1-12, T32N, R14E and Sections 6-7, T32N, R15E.

Located a 2" iron pipe with Brass cap stamped for corner and set by Jean Resvick, RLS, in 1978. Certificate on file.

## Corner references:

Basswood	4"	N 74 E	40.12'
Maple	6"	S 64 E	38.26'
Yellow Birch	9"	S 04 W	28.58'
Yellow Birch	12"	N 45 W	18.26'
Steel Sign Post		NE	0.50'

## Stock No. 26273

Sheet four of seven

E-21 3. Corner to Sections 1-12-2-11, T32N, R14E.

Located a 2" Aluminum monument with cap stamped for corner set by Milo Stefan, RLS in 1984. Certificate on file.

Corner references:

Sugar Maple	8"	N 42 E	57.18'
Sugar Maple	6"	S 18 E	22.90'
Basswood	10"	S 60 W	36.32'
Sugar Maple	6"	N 52 W	29.42'
7' Steel Sign Post		West	3.70'

A-21 4. Corner to Sections 35-36, T33N, R14E and Sections 1-2, T32N, R14E.

Located this corner position from the original bearing tree stumps. Rotting remains of the two Hemlock stumps, the Yellow Birch stump, and a hardwood stump hole were all found. In addition, the Hemlock line tree to the east 184.8 ft. was also located as a rotting stump above ground. The corner position fell just west of a blazed Sugar Maple. I set the corner from this stump evidence.

Corner references:

Hemlock	10"	N 14 W	42.75'
Sugar	18"	S 26 E	48.90'
Hemlock	4"	S 34 W	44.74'
Sugar	20"	N 51 W	18.75'
7' Steel Sign Post		N 84 E	1.00'

C-25 5. Quarter corner to Sections 1, T32N, R14E and 6, T32N, R15E.

Located an Oconto County monument set by Wayne Dobratz, RLS, in 1977. Certificate on file in Oconto County Courthouse.

Corner references:

1"x 30" iron rod		N 25°19'E	8.13'
1"x 30" iron rod		S 88°43'E	10.62'
1"x 30" iron rod		S 42°42'W	7.33'
Sugar	10"	N 01 W	29.95'
Sugar	8"	N 22 E	9.30'
Sugar	8"	S 89 E	19.30'
Popple	10"	S 50 W	8.80'
7' Steel Sign Post		West	2.00'

E-23 6. Quarter corner to Sections 1 and 12, T32N, R14E.

Located a 2" Aluminum monument with cap stamped for corner set by Milo Stefan, RLS in 1984. Certificate on file.

Corner references:

Basswood	6"	N 16 E	37.72'
Sugar Maple	6"	S 28 E	35.42'
Sugar Maple	8"	N 55 W	15.57'
7' Steel Sign Post		East	2.10'

C-21 7. Quarter corner between Sections 1 and 2, T32N, R14E.

Located a 1½" iron pipe surrounded by blazed Basswood trees. The iron pipe fit a blazed line to the south. No evidence of the original Lynn bearing trees was found. I accepted the iron pipe as perpetuation of the quarter corner.

Corner references:

Sugar	10"	N 18 E	13.80'
Sugar	12"	N 82 E	64.53'
Sugar	8"	S 16 E	11.44'

## Stock No. 26273

Sheet five of seven

Sugar 12" N 83 W 57.54'  
 7' Steel Sign Post S 84 E 1.00'

CORNERS ESTABLISHED8. Center quarter corner of Section 1, T32N, R14E.

C-23

I set this corner at the intersection point of the north-south and east-west quarter lines of said Section 1.

Corner references:

Spruce	6"	S 37 E	122.35'
Cedar	4"	N 25 E	93.89'
Spruce	5"	S 84 E	97.04'
8' Steel Sign Post		N 83 W	1.50'

9. Special Meander Corner No. 5 to Section 1, T32N, R14E.

A-8-23

I set this corner on the north-south quarterline on a mean bearing between the east and west section lines of Section 1 where the quarter line hit the south shore of Mary Lake.

Corner references:

Yellow Birch ( Triple )	5" N 47 E	13.64'
Red Maple	8" S 16 E	28.15'
Yellow Birch ( Triple )	10" S 08 W	46.24'
7' Steel Sign Post	North	1.40'

10. North sixteenth corner between Sections 6, T32N, R15E and 1, T32N, R14E.

B-25

Located a 4" cedar post in rock cairn at this corner position. It fell in line with a 1" iron pipe on the south shore of Mary Lake and the East quarter corner of said Section 1 all of which were set by Nathan Smith, surveyor, in 1923. I accepted the wood post as the sixteenth corner and monumented same.

Corner references:

Maple	10"	N 20 W	10.50'
Maple	8"	S 64 E	21.90'
Maple	6"	N 72 E	23.10'
7' Steel Sign Post		S 20 E	2.00'

11. Center-west-east one sixtyfourth corner of Section 1, T32N, R14E.

C-23-24

I set this corner on the east-west quarter line of said Section 1, one quarter of the distance between the center quarter and east quarter corners from the center quarter corner of said Section 1.

Corner references:

Spruce	6"	N 86 W	24.23'
Spruce	7"	N 13 E	10.46'
White Pine	11"	S 67 E	12.58'
7' Steel Sign Post		West	1.30'

**Stock No. 26273**

Sheet six of seven

*B-C-23-24*  
12. Property Corner No. 1, Section 1, T32N, R14E.

I set this corner at a right angle distance of 660.00 ft north of the east west quarter line of said Section 1 and on a mean bearing between the west and east lines of Government Lot 2 of Section 1.

Corner references:

Sugar	6"	N 42 W	29.85'
Sugar	6"	S 78 E	32.29'
Sugar ( Double)	10"	S 23 W	9.46'
7' Steel Sign Post		West	1.25'

*P-C-23*  
13. Property Corner No. 2, Section 1, T32N, R14E.

I set this corner at a right angle distance of 660.00 ft from the center quarter corner and east-west quarter lines to the north on the north-south quarter line of said Section 1.

Corner references:

Cedar	5"	N 88 E	27.44'
Cedar	7"	S 33 W	19.43'
Cedar	6"	N 46 W	22.00'
7' Steel Sign Post		N 06 W	2.30'

*E-22*  
14. West sixteenth corner between Sections 1-12, T32N, R14E.

I set this corner at midpoint between the south quarter and southwest corners of said Section 1.

Corner references:

Sugar	10"	N 37 E	30.22'
Sugar	11"	S 45 E	28.74'
Basswood	9"	S 02 W	15.85'
7' Steel Sign Post		North	3.00'

*D-22*  
15. Southwest sixteenth corner of Section 1, T32N, R14E.

I set this corner at the point of intersection of the north-south and east-west sixteenth lines in said Section 1.

Corner references:

Sugar	8"	N 33 E	52.74'
Sugar	6"	S 51 E	24.50'
Sugar	6"	S 04 W	25.79'
7' Steel Sign Post		South	2.65'

*D-23*  
16. Center south sixteenth corner of Section 1, T32N, R14E.

I set this corner at midpoint between the center quarter and south quarter corners of said Section 1.

Corner references:

Yellow Birch ( 4)	8"	S 74 E	199.90'
Sugar Maple	4"	N 48 W	80.66'
Black Cherry	8"	S 86 W	119.08'
7' Steel Sign Post		East	1.55'

Stock No. 26273

Sheet seven of seven

## D-24 17. Southeast sixteenth corner of Section 1, T32N, R14E.

I set this corner at the intersection point of the north-south and east-west sixteenth lines in the southeast quarter of said Section 1.

Corner references:

Red Maple	5"	N 89 E	33.53'
Red Maple	6"	N 04 W	10.52'
Red Maple	8"	N 54 W	21.77'
7' Steel Sign Post		South	2.55'

## E-24 18. East sixteenth corner between Sections 1 and 12, T32N, R14E.

I set this corner at midpoint between the south quarter and southeast corners of said Section 1.


Corner references:

Sugar Maple	8"	N 45 W	53.00'
Yellow Birch	10"	N 68 E	47.70'
Sugar Maple	10"	S 20 E	50.80'
Steel Sign Post		North	3.10'
Road centerline		South	13'

SURVEYOR'S AFFIDAVITSTATE OF WISCONSIN)  
OCONTO COUNTY )SS

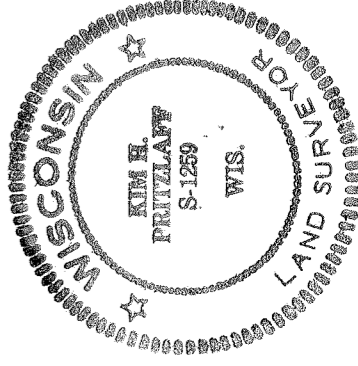
I, Kim H Pritzlaff, Registered Land Surveyor in the State of Wisconsin hereby certify: that I have surveyed and subdivided Section 1, Township 32 North, Range 14 East, Fourth Principal Meridian, Langlade County, Wisconsin.


The Plat map and notes herewith are a correct representation of the land surveyed and divided. I have surveyed and subdivided said section in accordance with the rules of survey of the public lands and with the Statutes of the State of Wisconsin.



Kim H Pritzlaff, RLS No. 1259  
AARON ASSOCIATES  
Oconto Falls, Wisconsin

Date of Survey: 1985



Plat ready for filing:   
District Ranger