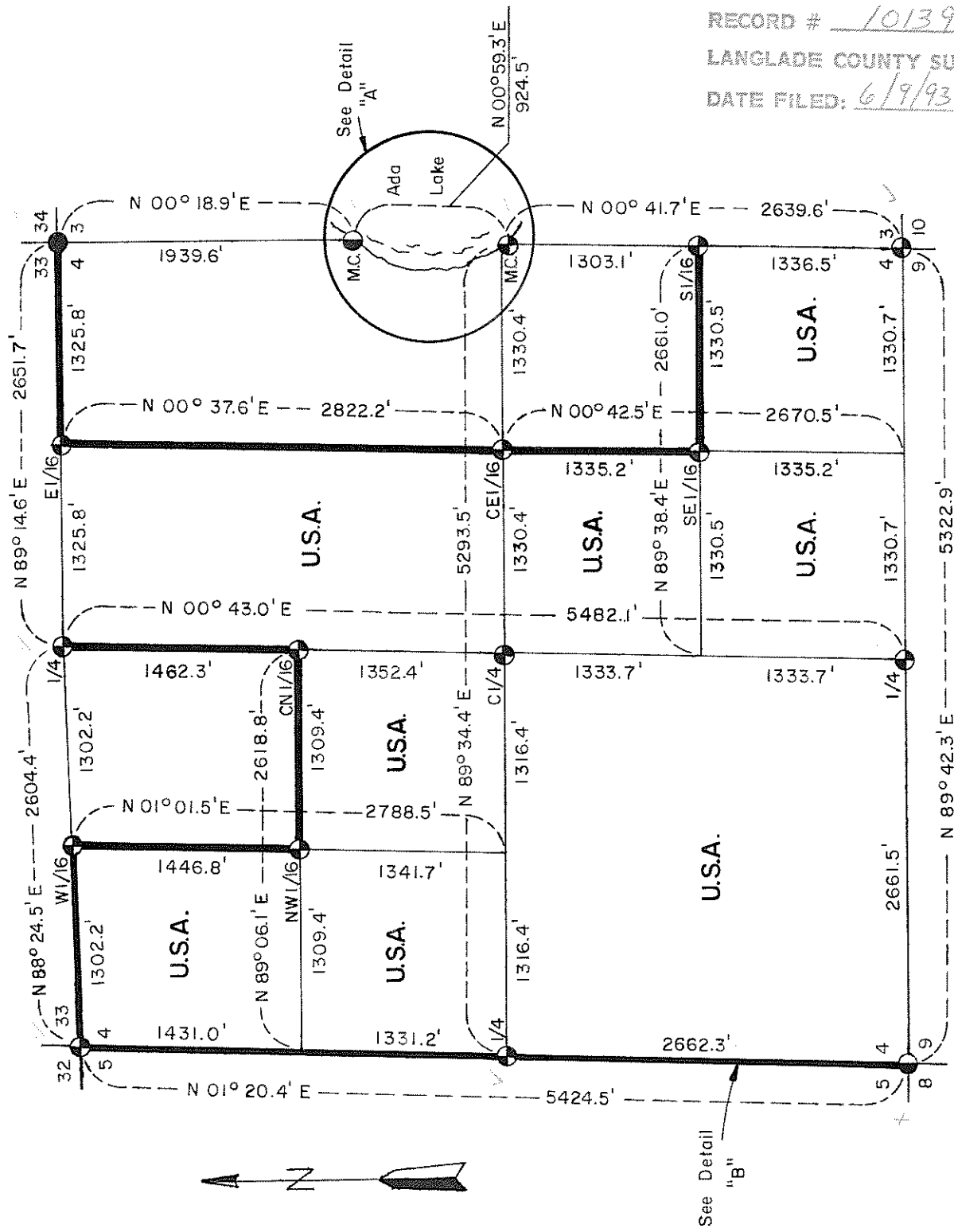
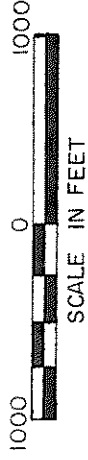


Stock No. 26273

PLAT OF SURVEY U.S. GOVERNMENT LAND

Being the NW1/4 Except the NE1/4 NW1/4; The W1/2 NE1/4;
The SE1/4 Except Government Lot 2; and the SW1/4, Section 4,
Township 33 North, Range 14 East, Fourth Principal Meridian
LANGLADE COUNTY, WISCONSIN



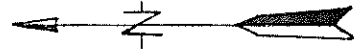
RECORD # 10139
LANGLADE COUNTY SURVEYORS OFFICE
DATE FILED: 6/9/93 BY: D. Tlusty

LEGEND

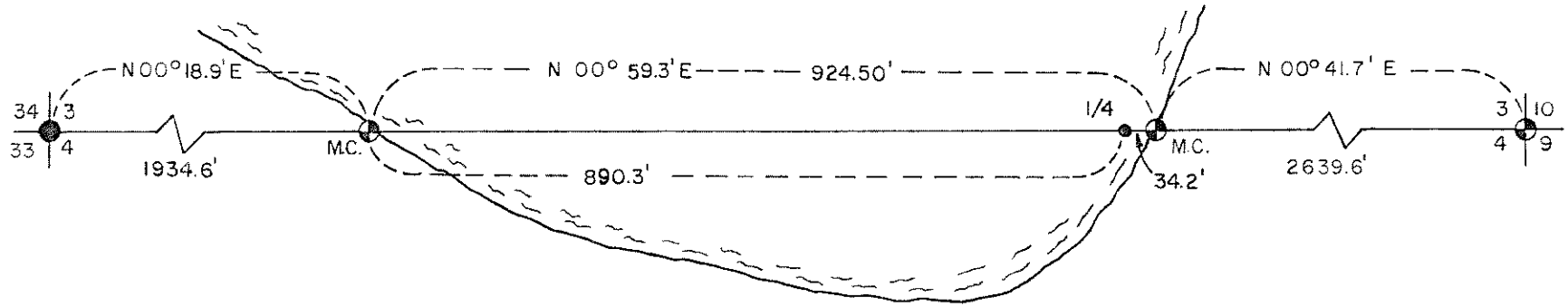
- 2" Aluminum Monument, 36" Long.
- 2" Aluminum Monument, 60" Long.
- Marked Boundary Line of U.S. Government Lands.
- 2" Iron pipe with Brass Cap

Conversion Factor:
Feet to Meters - 0.304801
Meters to Feet - 3.280833

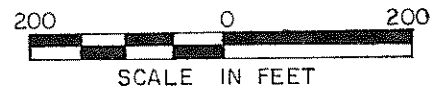
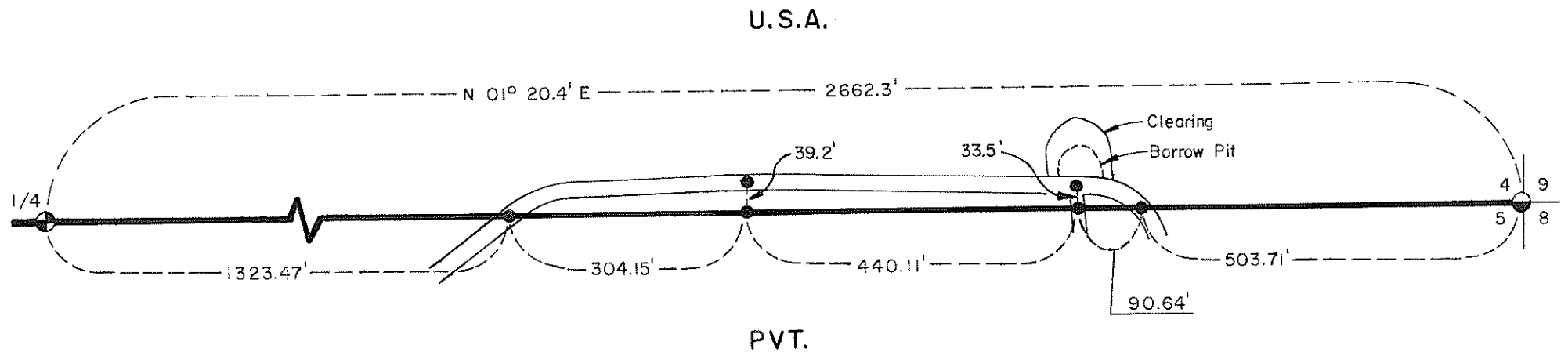
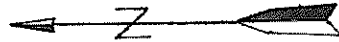
DETAIL "A"



Ada Lake



DETAIL "B"



Stock No. 26273SURVEY NOTES

This survey was made by the U. S. Department of Agriculture, Forest Service, for the purpose of restoring and establishing corners on the perimeter of Section 4, for establishing subdivisional corners within Section 4, and for locating and marking the boundaries of U. S. Government lands on their perimeter and within Section 4, Township 33 North, Range 14 East, Fourth Principal Meridian, Langlade County, Wisconsin.

The U. S. Government lands in this section were acquired in 1934 and 1942.

The original Government subdivision survey of this township was made in 1857 and 1865.

The corner positions recovered, restored, and established by this survey are marked by the monument described in the map legend.

The corner positions established were located to an accuracy of one part in 3000.

The bearings between corner positions are true bearings as determined by solar observations.

The field notes of this survey and a copy of this plat are on file in the Forest Supervisor's Office at Rhinelander, Wisconsin.

CORNERS RECOVERED AND RESTORED

1. Section Corner to Sections 4-5-32-33, T.33-34N., R.14E.
Corner was restored from witness testimony and previous surveys.
Corner References:

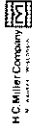
Sugar	6"	N.81°W.	27.76	feet
White Birch	6"	N.14°W.	81.41	feet
Sugar	13"	S.68°E.	25.37	feet
Cherry	6"	S.30°W.	44.65	feet
Steel Sign Post		South	9.20	feet
Cedar Post and Rock Pile		West	11.22	feet

2. Section Corner to Sections 3-4-33-34, T.33-34N., R.14E.
USDA, Forest Service aluminum monument. Certificate on file--Document Number 202744, Volume 1, Page 9.

3. Section Corner to Sections 3-4-9-10, T.33N., R.14E.
Corner position found marked by 2" aluminum monument set by USDA, Forest Service, R.L.S.-1558.

Corner References:

Butternut Hickory	7"	N.12°E.	25.74	feet
Sugar Maple	6"	S.60°E.	31.24	feet
Sugar Maple	14"	S.78°W.	38.23	feet
Sugar Maple	20"	N.40°W.	50.75	feet
Steel Sign Post		South	1.70	feet



Stock No. 26273

- E-9* 4. Section Corner to Sections 4-5-8-9, T.33N., R.14E.
USDA, Forest Service aluminum monument. Certificate on file--
August 21, 1978.
- A-11* 5. Quarter Corner to Sections 4 and 33, T.33-34N., R.14E.
Corner position recovered from witness tree of previous survey, old
fence corner, and witness testimony.
Corner References:
- | | | | | |
|-----------------|-----|---------|-------|------|
| Aspen | 12" | N.82°E. | 27.24 | feet |
| Sugar Maple | 8" | S.4°E. | 47.39 | feet |
| Black Cherry | 7" | N.85°W. | 13.18 | feet |
| Steel Sign Post | | West | 1.30 | feet |
- E-11* 6. Quarter Corner to Sections 4 and 9, T.33N., R.14E.
Corner restored on line and proportionally between section corners east
and west.
Corner References:
- | | | | | |
|-----------------|-----|-----------|-------|------|
| Red Oak | 14" | S.84°E. | 22.67 | feet |
| Sugar Maple | 5" | S.31°W. | 17.91 | feet |
| Sugar Maple | 14" | N.19°W. | 9.37 | feet |
| Steel Sign Post | | Northeast | 1.00 | feet |
- C-9* 7. Quarter Corner to Sections 4 and 5, T.33N., R.14E.
Corner restored on line and proportionally between section corners north
and south.
Corner References:
- | | | | | |
|-----------------|----|---------|-------|------|
| Spruce | 5" | N.47°E. | 33.83 | feet |
| Spruce | 8" | S.41°E. | 57.13 | feet |
| Black Cherry | 8" | S.46°W. | 44.93 | feet |
| Steel Sign Post | | North | 1.00 | feet |
- BC-13* 8. Meander Corner North Shore of Lake Common to Sections 3 and 4, T.33N., R.14E.
Corner position found marked by 2" aluminum monument set by USDA, Forest
Service, R.L.S.-1558.
Corner References:
- | | | | | |
|-----------------|-----|-----------|-------|------|
| Hemlock | 20" | N.19°E. | 35.64 | feet |
| Hemlock | 9" | S.81°W. | 55.47 | feet |
| Sugar | 10" | N.74°W. | 71.02 | feet |
| Steel Sign Post | | Northwest | 3.60 | feet |
- C-13* 9. Meander Corner South Side of Lake Common to Sections 3 and 4, T.33N., R.14E.
Corner position found marked by 2" aluminum monument set by USDA, Forest
Service, R.L.S.-1558.
Corner References:
- | | | | | |
|-----------------|-----|---------|-------|------|
| Hemlock | 10" | S.22°E. | 23.16 | feet |
| Hemlock | 14" | S.72°W. | 13.05 | feet |
| Hemlock | 12" | N.37°W. | 23.00 | feet |
| Steel Sign Post | | East | 1.70 | feet |

Stock No. 26273

D-13 10. South One-Sixteenth to Sections 3 and 4, T.33N., R.14E.
 Corner position found marked by a 2" aluminum monument set by USDA, Forest Service, R.L.S.-1558.
 Corner References:

Sugar Maple	8"	N.38°E.	9.40	feet
Basswood	8"	S.15°E.	33.44	feet
Sugar Maple	9"	S.65°W.	44.78	feet
Steel Sign Post		East	1.60	feet

CORNERS ESTABLISHED

C-11 1. Center Quarter to Section 4, T.33N., R.14E.
 Corner established at the intersection of the one-quarter lines of Section 4.
 Corner References:

Sugar Maple	14"	N.49°E.	33.71	feet
Sugar Maple	10"	S.43°E.	32.93	feet
Sugar Maple	13"	S.62°W.	15.65	feet
Steel Sign Post		Southwest	1.60	feet

A-10 2. West One-Sixteenth to Sections 4 and 33, T.33-34N., R.14E.
 Corner established midpoint and on line between the northwest corner and the north quarter corner of Section 4.
 Corner References:

White Birch	7"	S.30°E.	49.97	feet
Black Cherry	12"	S.60°W.	44.29	feet
Spruce	5"	N.59°W.	37.59	feet
Steel Sign Post		West	1.00	feet

B-10 3. Northwest One-Sixteenth to Section 4, T.33N., R.14E.
 Corner established at the intersection of the north and west one-sixteenth lines of Section 4.
 Corner References:

Black Cherry	6"	S.15°E.	14.57	feet
Red Maple	14"	S.32°W.	43.56	feet
Red Maple	16"	N.73°W.	15.45	feet
Steel Sign Post		North	1.60	feet

B-11 4. Center North One-Sixteenth to Section 4, T.33N., R.14E.
 Corner established midpoint and on line between the center quarter corner and the north quarter corner of Section 4.
 Corner References:

Sugar Maple	14"	S.81°E.	7.76	feet
Sugar Maple	9"	S.79°W.	20.52	feet
Sugar Maple	13"	N.18°W.	21.31	feet
Steel Sign Post		West	2.20	feet

Stock No. 26273

A-12 5.

East One-Sixteenth to Sections 4 and 33, T.33-34N., R.14E.

Corner established midpoint and on line between the northeast corner and the north quarter corner of Section 4.
 Corner References:

Yellow Birch	6"	N.70°E.	18.83	feet
Sugar Maple	14"	S.22°E.	11.00	feet
Sugar Maple	8"	S.59°W.	37.94	feet
Steel Sign Post		East	2.00	feet

C-12 6.

Center East One-Sixteenth to Section 4, T.33W., R.14E.

Corner established midpoint and on line between the center quarter corner and the east quarter corner of Section 4.
 Corner References:

Basswood	12"	N.8°W.	28.32	feet
Sugar Maple	10"	S.17°E.	27.90	feet
Sugar Maple	12"	S.34°W.	27.13	feet
Steel Sign Post		North	1.80	feet

D-12 7.

Southeast One-Sixteenth to Section 4, T.33W., R.14E.

Corner established at the intersection of the south and west one-sixteenth lines of Section 4.
 Corner References:


Sugar Maple	7"	N.50°E.	24.92	feet
Sugar Maple	10"	S.60°E.	7.97	feet
Sugar Maple	6"	S.82°W.	33.19	feet
Steel Sign Post		North	1.20	feet

SURVEYOR'S AFFIDAVIT

State of Wisconsin]
 County of Langlade] SS

I, Alan Harrison, Cadastral Surveyor, USDA, Forest Service, and a registered surveyor in the State of Wisconsin, hereby certify that I have surveyed and subdivided Section 4, Township 33 North, Range 14 East, Fourth Principal Meridian, State of Wisconsin.

The plat map and the notes herewith are a correct representation of the land surveyed and divided. I have surveyed and subdivided said section in accordance with the rules for survey of the public lands and with the statutes of the State of Wisconsin.


 Cadastral Surveyor, USDA, Forest Service
 R.L.S., State of Wisconsin
 Certificate S-1651



Date of Survey: October, 1983