

4351235 0020 2017

U.S. PUBLIC LAND SURVEY MONUMENT RECORD

Note: This form is intended and designed to fulfill all requirements of Wisconsin Administrative Code, Chapter A-E 7.08 U.S. Public Land Survey Monument Record (3)(a-i).

(a) CORNER LOCATION
 1/4 Cor. of Secs. 2 & 35
 Township 34 & 35 North
 Range 12 East of the 4th P.M.
 Town of Ainsworth/Nashville
 County of Langlade/Forest
 WISCRS - Langlade County
 N: 458,735.53 USft
 E: 671,448.80 USft
 WISCRS - Forest County
 N: 532,295.91 USft
 E: 822,808.74 USft
 Datum: NAD 83(2011)
 GNSS Method: WISCORS RTN

		SEC. 2	
		T34N R12E	

(b) HISTORY OF ORIGINAL CORNER ESTABLISHMENT

Original Surveyor: Alfred Millard
 Date of Survey: August, 1857
 Completed: August, 1857
 Original Accessories:
 Hemlock 15" N24°E, 14 lks.
 Hemlock 10" S26°W, 10 lks.

(b)(f)(g)(h) Description of monument found at this corner and if it was accepted, state all evidence (material, testimonial, occupational, plats, records, other monuments) used as a basis for accepting. If not accepted or if nothing was found, state evidence used as basis for establishing location. If re-established through lost corner proportionate methods, indicate all monuments, distances and directions used to establish. Indicate type of monument and sign post found or set.

This is a perpetuation of a previous USPLS Monument Record by Thomas R. Arnott, RLS dated November 10, 1975 and filed in the office of the Forest County Register of Deeds. A complete history of the corner can be found on the previous monument record. I accept the previous location as a true and faithful perpetuation or reestablishment of the original corner location and further perpetuate it as follows.

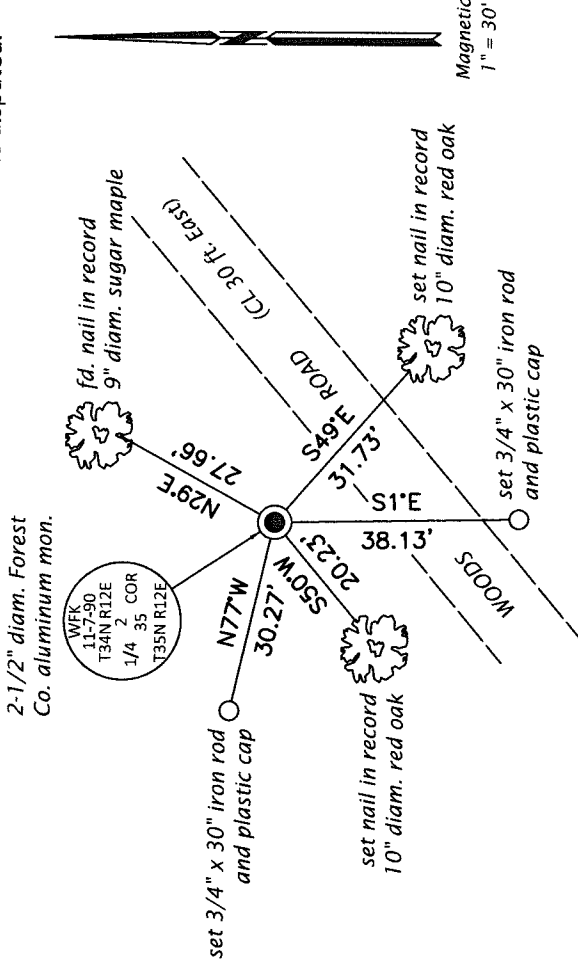
This is a perpetuation of a previous USPLS Monument Record by William F. Kelly, RLS dated November 9, 1990 and filed in the office of the Langlade County Surveyor. A complete history of the corner can be found on the previous monument record. I accept the previous location as a true and faithful perpetuation or reestablishment of the original corner location and further perpetuate it as follows.

To augment the record:

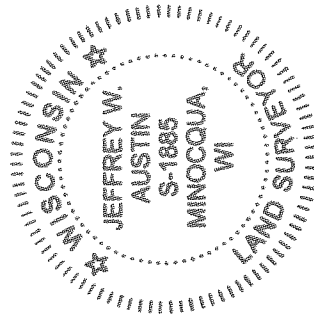
September 8, 1982: Survey of Sec. 35 for Exxon by Stuart L. Foltz, RLS indicates corner is marked by a Forest County aluminum monument with the following BT's: 8" maple N26°E, 27.2'; 8" oak S55°E, 5.5'; 4" oak S50°W, 20.4'.

October 23, 2016: I found and accepted the record monument, a 2-1/2" diam. aluminum pipe with a 3-1/4" diam. Forest Co. aluminum cap flush in a ring of stone. I set a DEEP-1 magnet adjacent to the monument. The record bearing trees at S16°W and S55°E are dead or gone. I found or established accessories as shown below. I found a white vinyl sign post bearing Northwest, 1 ft.

(c)(d)(e) Plan view of corner with ties to at least 4 witness monuments. If in disagreement with previously established corner, show the distances between the two corners and also indicate the ties to the disputed.



(i) I, Jeffrey W. Austin, Professional Land Surveyor No. S-1885, hereby certify that the corner location on this record was determined by me or under my direction and control and that this U.S. Public Land Survey Monument Record is correct and complete to the best of my knowledge and belief.



[Signature]
 Signature
 May 4, 2017
 Date