

CERTIFIED LAND CORNER RESTORATION

State of Wisconsin }
County of Lanlade } ss.

History of original corner establishment:

I Raymond J. Hallisy do hereby certify that on the 5th day of July, 19 71, I found evidence of the Section corner of 34, 35, 3, & 2 Township 34 & 35, North, Range 12E, Fourth, Principal Meridian, as described hereon; and that from this evidence I established a new monument and accessories as described hereon to perpetuate the original location of this corner.

Found original wood post, top rotted off point in perfect condition, agreed with original field notes.

Original BT's					
Tamarack	12	N65E	24 Links	Still standing	markings plain
Tamarack	12	S80E	22 Links	Down	markings plain
Spruce	10	N40W	9 Links	Stump	

Description of corner evidence found:

See above

Resident witnesses:

.....
.....
.....

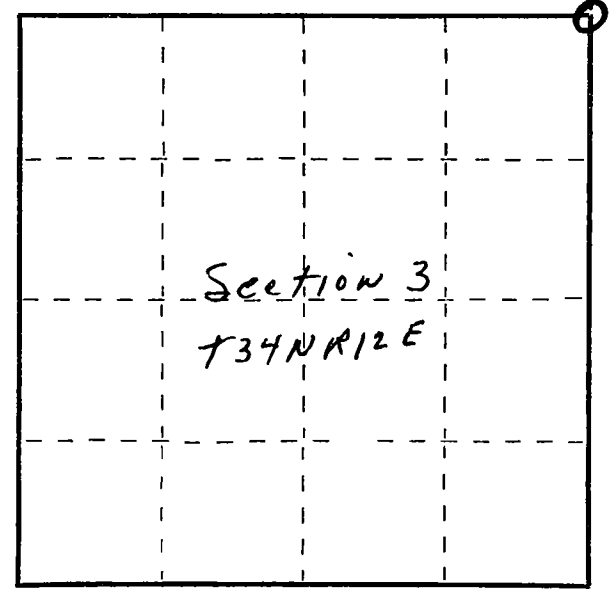
Description of monument and accessories I established to perpetuate the original location of this corner.

Set squared and scribed 6" cedar post 7' Long marked ~~XXXXXX~~ 2 3 34 35

New BT's to corner

Cedar	7"	N0°	25 Links
White Pine	5"	S32E	14.5 Links

BT's faced at base of tree and scribed BT



○ = Corner monument restored.

Dated at Antigo, Wis., this 5th day of July, 19 71

Signature R. J. Hallisy Title Reg. Land Surveyor Registration No. 685
(County Surveyor, Registered Land Surveyor, or other duly authorized official)

Office of Register of Deeds, County of....., I hereby certify that the within instrument was filed in this office for record on the.....day of....., 19..... at.....o'clock..... M.

.....
(Register of Deeds)

By.....Deputy

43512 34 0000

FORM 985 R. C. MILLER CO., MILWAUKEE