

LANGLADE COUNTY U.S. PUBLIC LAND CORNER RESTORATION

The Southeast corner of Section 36, T. 35 N., R. 11 E., Langlade County, WI.

Corner was: (check all that apply)

4351136 0000

- Restored through acceptance of an obliterated evidence location.
- Restored through acceptance of a found perpetuated location.
- Determined to be lost and re-established through proportionate methods.
- Show bearings and distances to PLSS corners used for proportioning, and show original distances).
- Restored/recovered/re-established in a location that differs from a previously established position.
- (Show difference in plan view below).
- Check here if additional information is shown on the reverse side of this form.

Describe record evidence, recovered physical evidence, occupational evidence, testimonial evidence and all other evidence considered in the recovery/restoration of the corner.

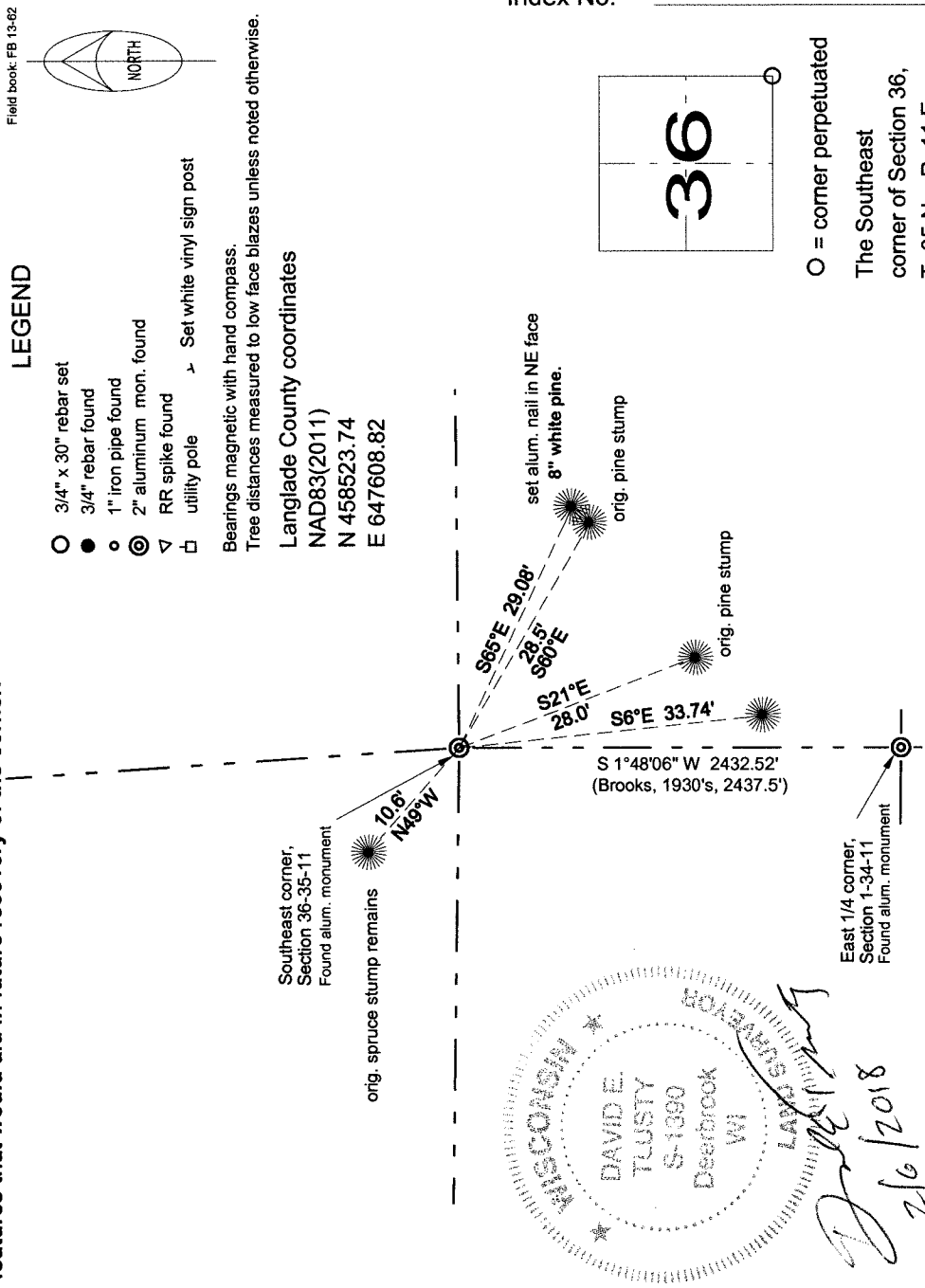
The original corner was established in 1857 by Deputy Surveyor Alfred Millard. In the 1930's C.W. Borth running north between Sec's. 1 & 6, at 2437.5 ft., found rotted stake and evidence of the four original bearing trees. He set a new cedar stake in place of the rotted stake found. H.C. Lawrence, in 1953, "found old post of large size" and made no mention of bearing trees. In 1976, Philip Hansen, recovered "7" cedar post, 8ft tall, squared and scribed" to identify the corner. He replace the post with a 2 1/2" aluminum monument. On 5/18/2017, David E. Tlusty, found the aluminum monument loose in a mound of stones, top of monument 26" above ground. Removed monument, shortened it to 36" and reset it solid, with top of monument 0.3' above ground, and in a mound of stones. I found evidence of the original bearing trees NW, SE and SW and found a pine bearing tree of Hansens, S 6 E, 33.74 to alum. nail set in the side. Perpetuated the location as shown below.

Physical description of the monument set:

Reset the existing aluminum monument as described above.

Set a 6' green steel channel post with "Langlade County Forest Boundary" sign, 0.5' west of the corner monument.

Describe the accessories used to perpetuate the corner. Include a plan view drawing and accessories found/set. Describe measuring point on bearing trees. Show any topographic features that would aid in future recovery of the corner.



DAVID E. TLUSTY
 S-13890
 Deerbrook
 WI

David E. Tlusty
 2/6/2018

Index No. A 25 34-11

○ = corner perpetuated
 The Southeast corner of Section 36, T. 35 N., R. 11 E., Langlade County, WI

I, David E. Tlusty, Registered Land Surveyor, as Langlade County Surveyor, certify that the corner location on this record was determined by me and that this U.S. Public Land Survey Monument Record is correct to the best of my knowledge and belief.