

U. S. PUBLIC LAND SURVEY MONUMENT RECORD

INSTRUCTIONS:

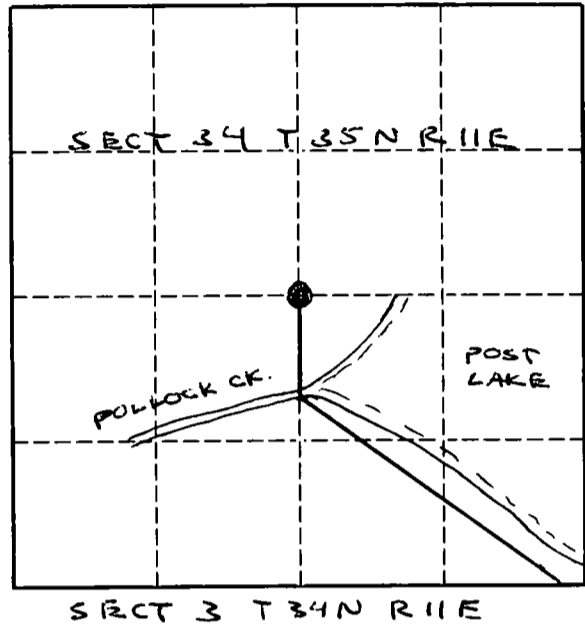
This record shall show the location of the corner and shall include all of the following nine elements (a through i).

- (a) Identify the corner by reference to the U.S. public land survey system.
O = Corner monument restored.

ORIGINAL CORNER ESTABLISHED BY HIRAM C FELLOWS IN MAY 1859

ORIG. BT - ASH 10 N10W 3245
ASH 6 S82W 3045

ROBERT POSS LOCATED SCRIBED 5" WOOD POST AND 1 1/2" IRON PIPE AND SET 1" IRON PIPE WITH BRASS CAP AT CORNER IN 1967

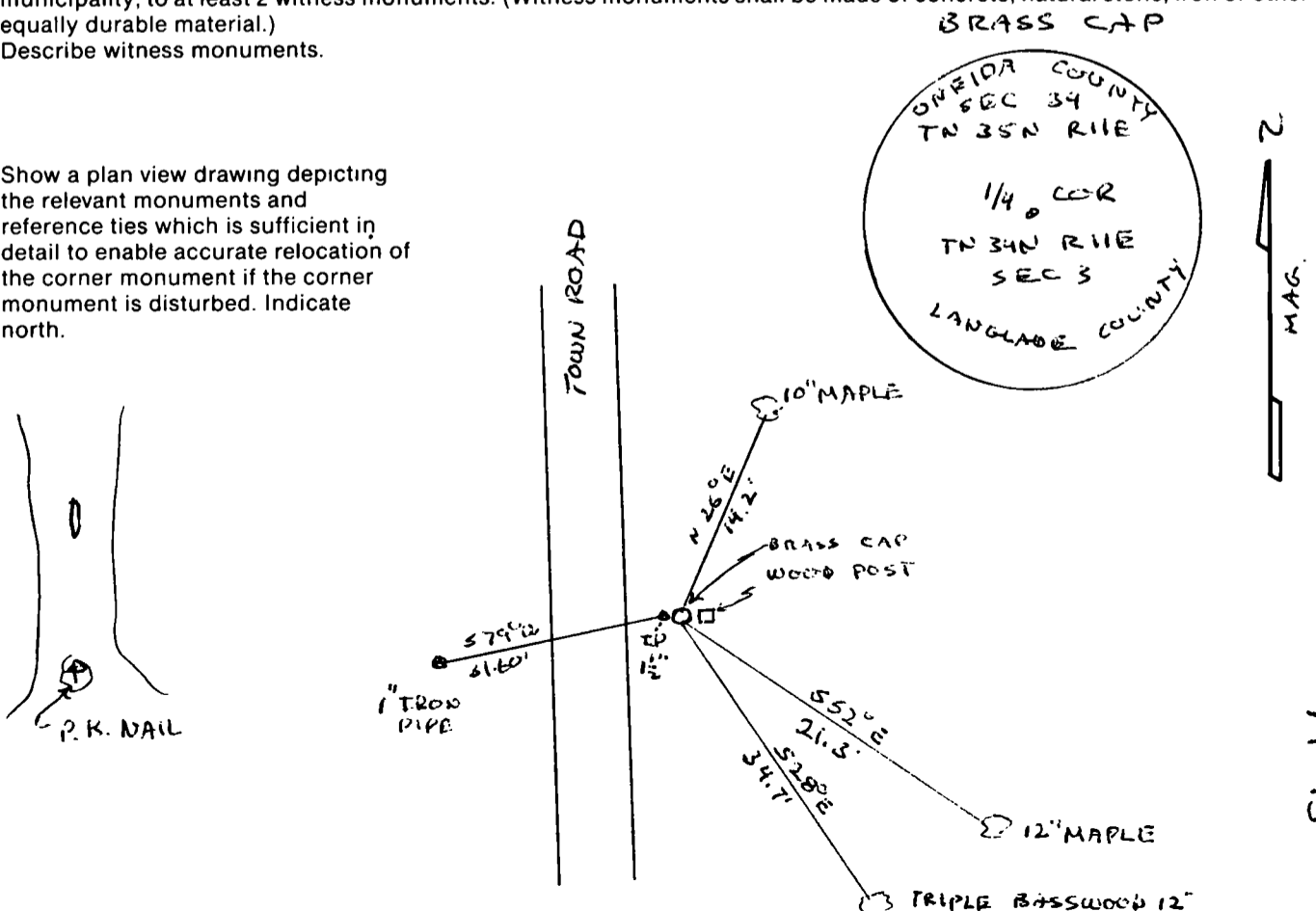


- (b) Describe any record evidence, monument evidence, occupational evidence, testimonial evidence or any other material evidence you considered, and whether the monument was found or placed.

LOCATED BRASS CAP SET BY R. POSS - SET P.K. NAIL IN BASE OF WITNESS TREES AND SET 1" IP WIT. MON.

- (c) In the plan view drawing below, provide reference ties to at least 4 witness monuments, or, if the location is within a municipality, to at least 2 witness monuments. (Witness monuments shall be made of concrete, natural stone, iron or other equally durable material.) Describe witness monuments.

- (d) Show a plan view drawing depicting the relevant monuments and reference ties which is sufficient in detail to enable accurate relocation of the corner monument if the corner monument is disturbed. Indicate north.



Describe any material discrepancy between the location of the corner as restored or reestablished and the location of that corner as previously restored or reestablished by distance and direction. Show the discrepancy on the plan view drawing under (d), above. Show the distances between the corner as previously restored or reestablished and (1) the corner as restored or reestablished, and (2) to at least 2 of the witness monuments shown on the drawing in (d), above.

NONE

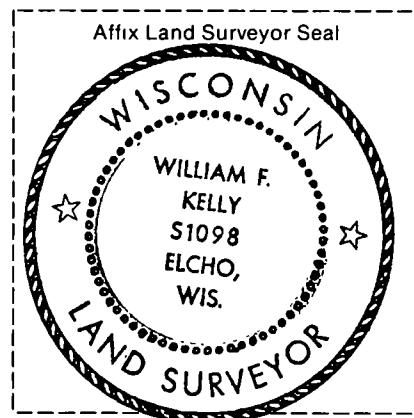
(f) Was the corner restored through acceptance of (1) an obliterated evidence location, or, (2) a found perpetuated location?
(2)

(g & h) Was the corner reestablished through lost corner proportionate methods? If so, show the method, including the directions and distances to other public land survey corners used as evidence or used for proportioning in determining the corner location.

NONE

(i) I, WILLIAM F. KELLY RES 1098
(type or print name)

certify that the corner location shown on this record was determined by me or under my direction and control and that this U.S. Public Land Survey Monument Record is correct and complete to the best of my knowledge and belief.

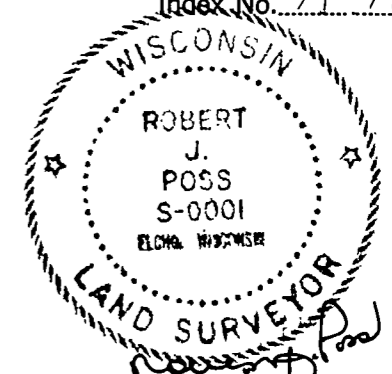


William F. Kelly 6-19-90
Signature Date

CERTIFIED LAND CORNER RESTORATION

34-11

Index No. A-15



State of Wisconsin }
County of LANGLADE } ss.

I, ROBERT J. POSS, do hereby certify that on the 3RD day of JULY, 19 67, I found evidence of the NORTH 1/4 corner of SECTION 3 Township 34, North, Range 11 EAST, Fourth, Principal Meridian, as described hereon; and that from this evidence I established a new monument and accessories as described hereon to perpetuate the original location of this corner.

History of original corner establishment:

Description of corner evidence found:

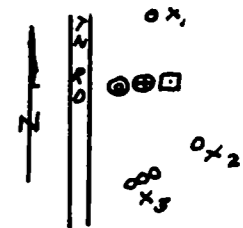
SQD STAKE - 5" SQ. MKD 53" ON SOUTH SIDE; SEC. 34 ON NORTH; 1/4 COR ON WEST SIDE; GOOD COND. 1 1/2" PIPE ALONGSIDE; ON E. SIDE TOWN ROAD

Resident witnesses:

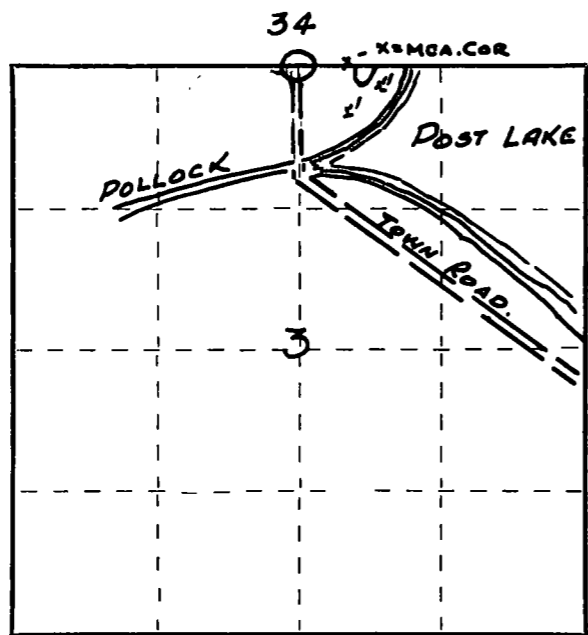
.....
.....
.....

Description of monument and accessories I established to perpetuate the original location of this corner.

SET 1" IRON PIPE WITH BRASS CAP MKD: ONEIDA COUNTY SEC. 34 TN 35N 1/4 R 11E
IN 6" X 42" CONC. SEC. 3 COR TN 34N R 11E LANGLADE COUNTY.
BT'S: BLAZED - NOT SCRIBED.
X₁ OLD BLAZE ON 10" HD. MAPLE N 26° E 14.2'
X₂ OLD BLAZE ON 12" HD. MAPLE S 52° E 21.3'
X₃ BLAZED CTR. TREE TRIPLE BASSWOOD 12" EA. S 28° E 34.7'



⊙ COR. AS SET
○ 1 1/2" PIPE W/ FLANGE
□ EXIST. SQD STK.



Dated at ELCHO, Wis., this 3RD day of JULY, 19 67.

Signature Robert J. Poss Title REG. LAND SURVEYOR Registration No. S-0001
(County Surveyor, Registered Land Surveyor, or other duly authorized official)

Office of Register of Deeds, County of....., I hereby certify that the within instrument was filed in this office for record on the..... day of....., 19..... at..... o'clock..... M.

(Register of Deeds)

By..... Deputy

○ = Corner monument restored.

FORM 985 H. C. MILLER CO., MILWAUKEE