

CERTIFIED LAND CORNER RESTORATION

Index No. H-23

State of Wisconsin }
County of LANGLADE } ss.

I WILLIAM F. KELLY, do hereby certify that on the 24TH day of NOVEMBER, 1975, I found evidence of the N 1/4 corner of SECTION 36 1/2 Township 34, North, Range 10 E, Fourth Principal Meridian, as described hereon; and that from this evidence I established a new monument and accessories as described hereon to perpetuate the original location of this corner.

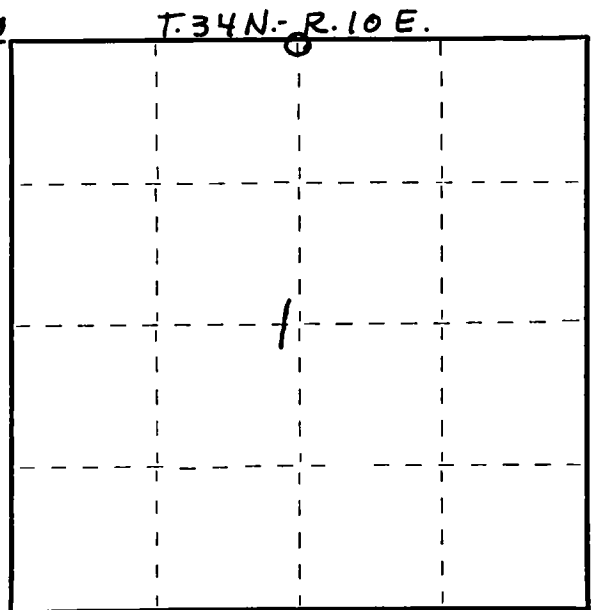
Resident witnesses:

.....
.....
.....

4351036 0020 4975

FORM 985 M. C. MILLER CO., MILWAUKEE

ONEIDA LANGLADE



○ = Corner monument restored.

History of original corner establishment:

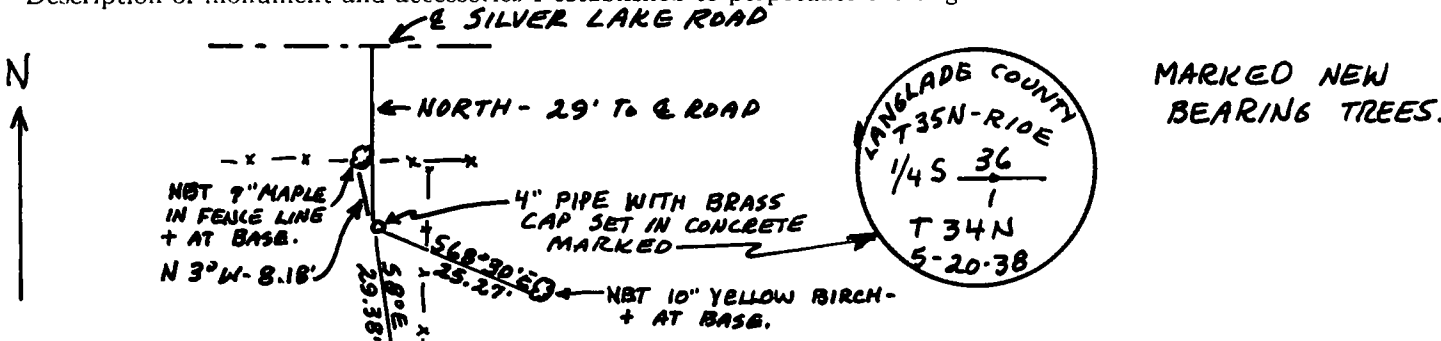


William F. Kelly

Description of corner evidence found:

LOCATED N 1/4 COR. SECT. 1, T. 34 N. - R. 10 E. - 4" PIPE WITH BRASS CAP. SET IN CONCRETE.

Description of monument and accessories I established to perpetuate the original location of this corner.



Dated at ELCHO, Wis., this 24TH day of NOVEMBER, 1975

Signature William F. Kelly Title REGISTERED LAND SURVEYOR Registration No. 51098
(County Surveyor, Registered Land Surveyor, or other duly authorized official)

Office of Register of Deeds, County of....., I hereby certify that the within instrument was filed in this office for record on the..... day of....., 19..... at..... o'clock..... M.

(Register of Deeds)

By.....Deputy