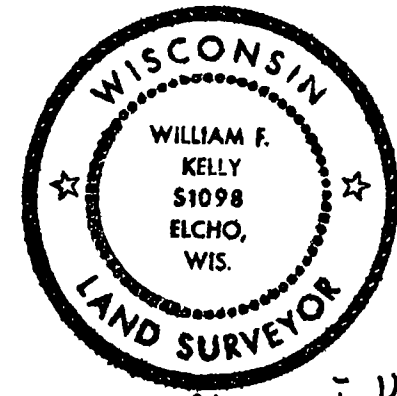


CERTIFIED LAND CORNER RESTORATION

Index No. H-21

State of Wisconsin }  
County of LANGLADE } ss.

History of original corner establishment:

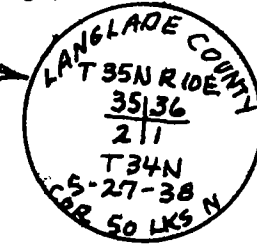


*William F. Kelly*

I WILLIAM F. KELLY, do hereby certify that on the 24<sup>TH</sup> day of NOVEMBER, 1975, I found evidence of the SECTION corner of SECTIONS 35, 36, 2 & 1 Township 34, North, Range 10 E, Fourth Principal Meridian, as described hereon; and that from this evidence I established a new monument and accessories as described hereon to perpetuate the original location of this corner.

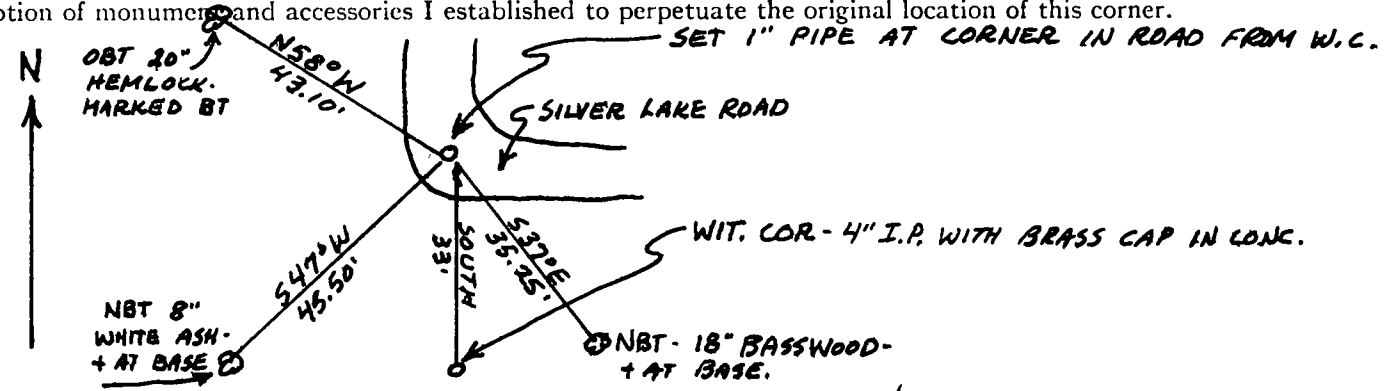
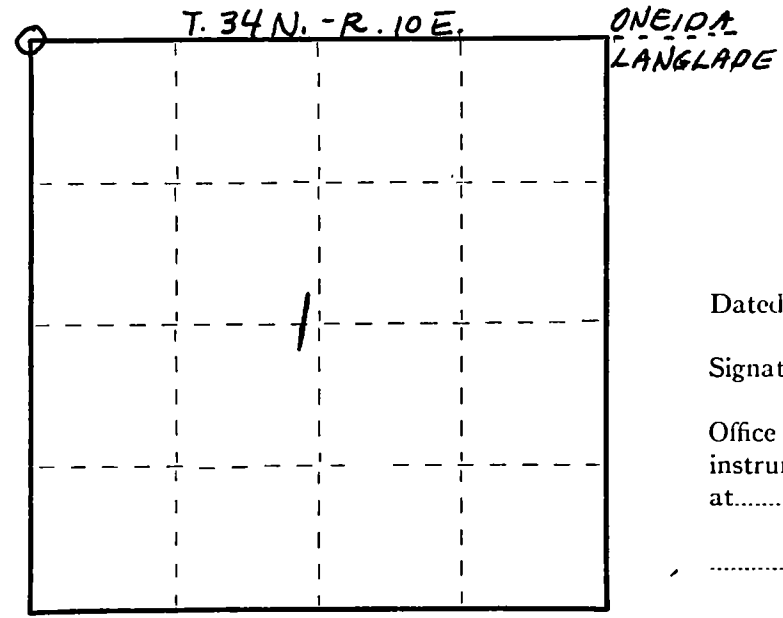
Description of corner evidence found:

FOUND WITNESS CORNER MARKED: LOCATED OLD B.T. WITH BLAZE AT BASE.



Resident witnesses:

Description of monuments and accessories I established to perpetuate the original location of this corner.



Dated at ELCHO, Wis., this 24<sup>TH</sup> day of NOVEMBER, 1975

Signature William F. Kelly Title REGISTERED LAND SURVEYOR Registration No. 51098  
(County Surveyor, Registered Land Surveyor, or other duly authorized official)

Office of Register of Deeds, County of \_\_\_\_\_, I hereby certify that the within instrument was filed in this office for record on the \_\_\_\_\_ day of \_\_\_\_\_, 19\_\_\_\_ at \_\_\_\_\_ o'clock \_\_\_\_\_ M.

(Register of Deeds)

By \_\_\_\_\_ Deputy

○ = Corner monument restored.

FORM 985 M. C. MILLER CO. - MILWAUKEE