

CERTIFIED LAND CORNER RESTORATION

Index No. A-7

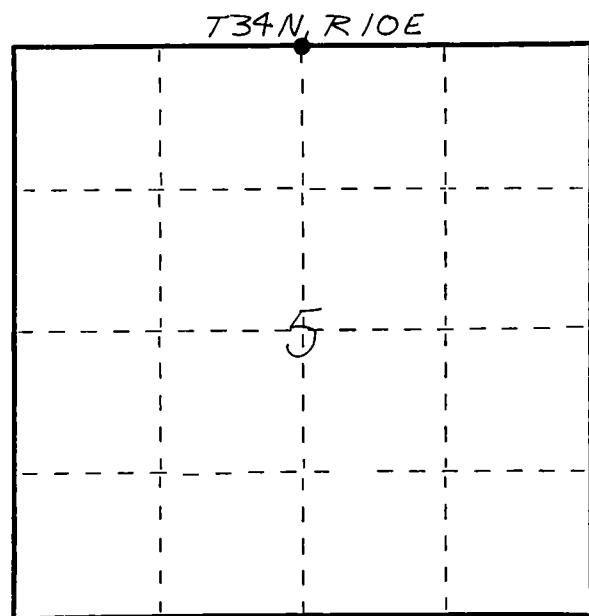
State of Wisconsin }
 County of LANGLADE } ss.

I WILLIAM F. KELLY, do hereby certify that on the 9th day of DEC., 1981, I found evidence of the N 1/4 corner of SEC. 5 Township 34, North, Range 10 EAST, Fourth Principal Meridian, as described hereon; and that from this evidence I established a new monument and accessories as described hereon to perpetuate the original location of this corner.

Resident witnesses:

.....

FORM 985 M. C. MILLER CO., MILWAUKEE

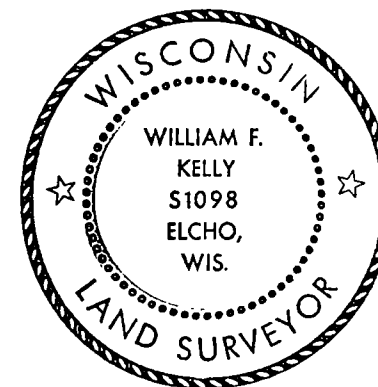


○ = Corner monument restored.

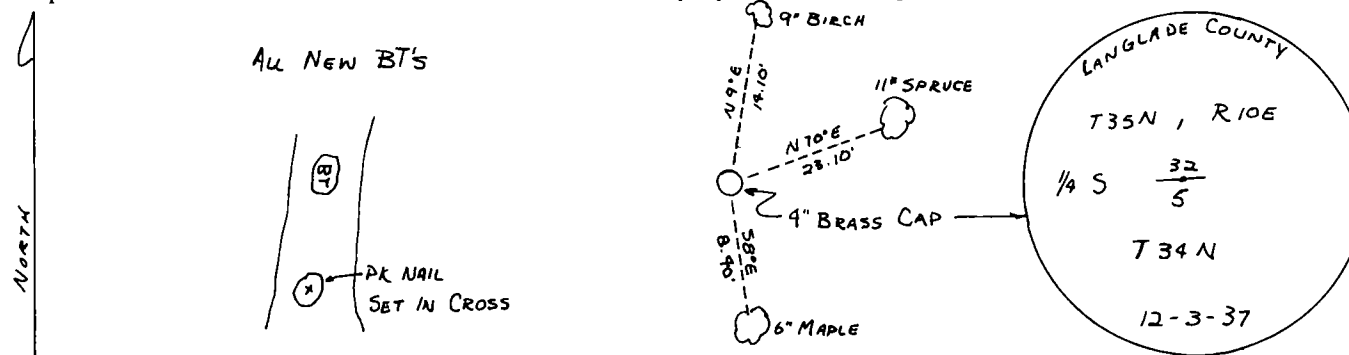
History of original corner establishment:
ORIGINAL CORNER ESTABLISHED BY
JAMES L. NOWLIN IN JULY, 1865.

RESURVEYED BY TWP. IN
1930'S BY "CCC"

Description of corner evidence found:
4" BRASS CAP MONUMENT,
FOUND IN PLACE.
MARKED 3 NEW BT'S.



Description of monument and accessories I established to perpetuate the original location of this corner.



Dated at ELCHO, Wis., this 9th day of DECEMBER, 1981

Signature William F. Kelly Title COUNTY SURVEYOR Registration No. 1098
 (County Surveyor, Registered Land Surveyor, or other duly authorized official)

Office of Register of Deeds, County of....., I hereby certify that the within instrument was filed in this office for record on the..... day of....., 19..... at..... o'clock..... M.

.....
 (Register of Deeds)

By..... Deputy