

# U.S. PUBLIC LAND SURVEY MONUMENT RECORD

(Prepared and as required by S. A-E 7.08 WI Administrative Code)

The NORTHWEST corner of Section 4, T. 34 N., R. 10 E., Langlade County, WI

Corner was: (check all that apply)

- Restored through acceptance of an obliterated evidence location.
- Restored through acceptance of a found perpetuated location, *from ties*.
- Determined to be lost and re-established through proportionate methods.  
(Show bearings and distances to PLSS corners used for proportioning.)
- Restored/recovered/reestablished in a location that differs from a previously established position. (Show difference in plan view below.)

351032 0000

Check here if additional information is shown on the reverse side of this form.

Describe record evidence, recovered physical evidence, occupational evidence, testimonial evidence and all other evidence considered in the recovery/restoration of the corner.

The original corner was established in 1859 by Hiram C. Fellows. Original bearing trees: sugar, 7", N47°W, 6 links; aspen, 9", N10°E, 28 links; aspen, 14", S32°E, 23 links, and an aspen, 12", S51°W, 17links. In 1937, D. A. Hintz retraced the original government survey and found: "section lines blazed N-S and E-W. Found part of old scribed stake and BT by unknown surveyor: hemlock stump, 12", N82°W, 35.1 lks. Made new BT's: maple, 18", N80-1/2°E, 44 links (29.04'); maple, 12", S27°W, 19.9 links (13.13'); hemlock, 10", N67°W, 49.2 links (32.47') and a new BO: cross on top of grey rock, N01°E, 25.6 links (16.9'). In 1980, former surveyor Kelly "found a 4" brass cap monument set in concrete" and marked 3 BT's. 10/13/98 D. Tlusty, D. Williams. Found 4" iron pipe with brass cap and all four 1937 bearing objects. The found monument location doesn't work with 1937 record ties. I re-set the monument using the 1937 ties.

Physical description of the monument set:

For the corner, I re-set the 1937 monument, a 4" pipe with brass cap, then measured new ties as shown below.

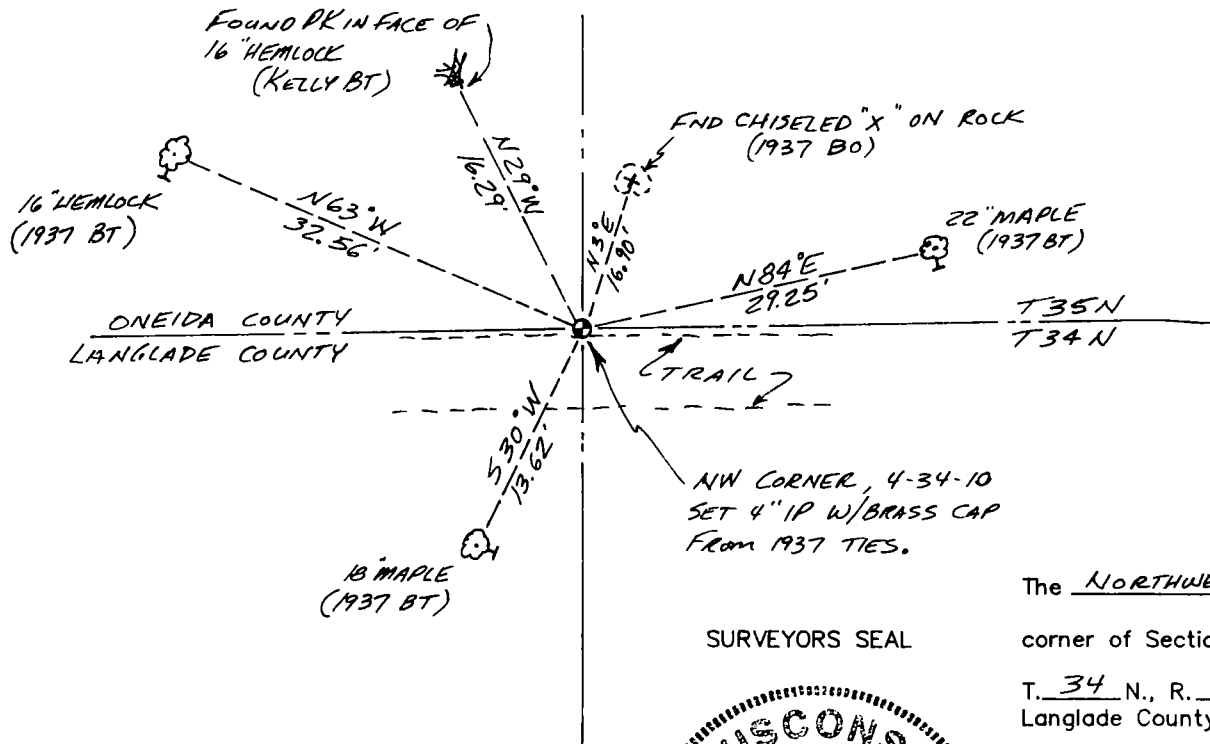
Describe the accessories used to perpetuate the location of the corner. Include a plan view drawing and indicate accessories found/set. Describe measuring point on bearing trees. Show any topographic features that would aid in future recovery of the corner.

☉ = set aluminum nail (v) in low blaze on side of tree shown

FB 16-48

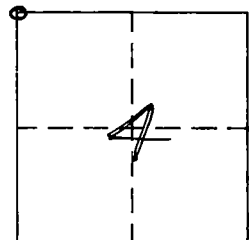
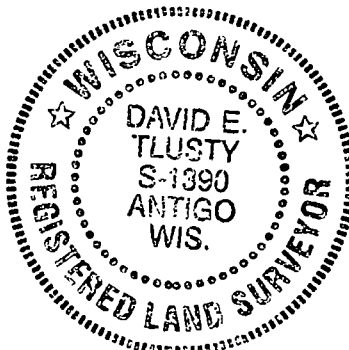
Bearings magnetic with hand compass

Monument as re-set is S61°E, 11.9' from "found" location. It appears that the monument may have been bulldozed out at one time (it is on the north edge of east-west trail) and someone re-set it without using the 1937 ties, and then Kelly didn't check the 1937 ties either, but used the monument as found.



SURVEYORS SEAL

The NORTHWEST corner of Section 4  
T. 34 N., R. 10 E.  
Langlade County, WI



○ = Location of corner

I, DAVID E. TLUSTY, LANGLADE COUNTY SURVEYOR, certify that the corner location shown on this record was determined by me or under my direction and control and that this U.S. Public Land Survey Monument Record is correct and complete to the best of my knowledge and belief.

*David E. Tlusty* 6/15/99  
Signature Date

INDEX No.

34-10  
A-9

WISCONSIN ADMINISTRATIVE CODE

**A-E 7.07 Monuments.** The type and position of monuments to be set on any survey shall be determined by the nature of the survey, the permanency required, the nature of the terrain, the cadastral features involved, and the availability of material.

**History:** Cr Register, February, 1987, No. 374, eff. 3-1-87.

**A-E 7.08 U.S. public land survey monument record.**

**(1) WHEN MONUMENT RECORD REQUIRED.** A U.S. public land survey monument shall be prepared and filed with the county surveyor's office as part of any land survey which includes or requires the perpetuation, restoration, reestablishment or use of a U.S. public land survey corner, and,

(a) There is no U.S. public land survey monument record for the corner on file in the office of the county surveyor or the register of deeds for the county in which the corner is located; or,

(b) The land surveyor who performs the survey accepts a location for the U.S. public land survey corner which differs from that shown on a U.S. public land survey monument record filed in the office of the county surveyor or register of deeds for the county in which the corner is located, or,

(c) The witness ties or U.S. public land survey monument referenced in an existing U.S. public land survey monument record have been destroyed or disturbed.

**(2) FORM REQUIRED.** A U.S. public land survey monument record shall be prepared on the board-approved form or on a form substantially the same as the board-approved form which includes all the elements required by this section. A form used for this purpose shall be entitled, "U.S. Public Land Survey Monument Record".

**Note:** A copy of the board-approved form is available from the Department of Regulation and Licensing, Bureau of Business and Design Professions, 1400 East Washington Avenue, P.O. Box 8935, Madison, Wisconsin 53708

**(3) MONUMENT RECORD REQUIREMENTS.** A U.S. public land survey monument record shall show the location of the corner and shall include all of the following elements:

(a) The identity of the corner, as referenced to the U.S. public land survey system;

(b) A description of any record evidence, monument evidence, occupational evidence, testimonial evidence or any other material evidence considered by the surveyor, and whether the monument was found or placed;

(c) Reference ties to at least 4 witness monuments. Witness monuments shall be concrete, natural stone, iron, bearing trees or other equally durable material, except wood other than bearing trees;

(d) A plan view drawing depicting the relevant monuments and reference ties which is sufficient in detail to enable accurate relocation of the corner monument if the corner monument is disturbed;

(e) A description of any material discrepancy between the location of the corner as restored or reestablished and the location of that corner as previously restored or reestablished;

(f) Whether the corner was restored through acceptance of an obliterated evidence location or a found perpetuated location;

(g) Whether the corner was reestablished through lost-corner--proportionate methods;

(h) The directions and distances to other public land survey corners which were used as evidence or used for proportioning in determining the corner location; and,

(i) The stamp and signature or seal and signature of the land surveyor under whose direction and control the corner location was determined and a statement certifying that the U.S. public land survey monument record is correct and complete to the best of his or her knowledge and belief.

**History:** Cr Register, February, 1987, No. 374, eff. 3-1-87, in (1) and (2)(c), Register, May, 1989, No. 401, eff. 6-1-89

*Copy to ONUDA Co. 12/10/99 J.T.*

CERTIFIED LAND CORNER RESTORATION

Index No. A-9

State of Wisconsin }  
County of LANGLADE } ss.

I WILLIAM F. KELLY, do hereby certify that on the 26<sup>th</sup> day of DECEMBER, 19 80, I found evidence of the NE corner of Sec 5 Township 34, North, Range 10 E, Fourth Principal Meridian, as described hereon; and that from this evidence I established a new monument and accessories as described hereon to perpetuate the original location of this corner.

Resident witnesses:

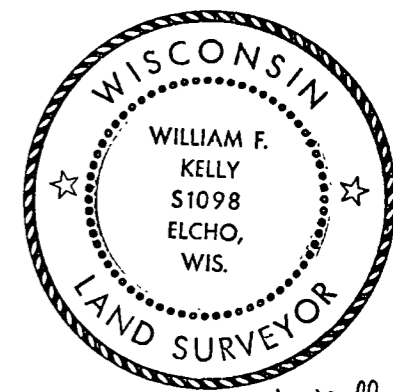
.....  
.....  
.....

History of original corner establishment:

ORIGINAL CORNER ESTABLISHED BY JAMES NOWLIN IN 1865.

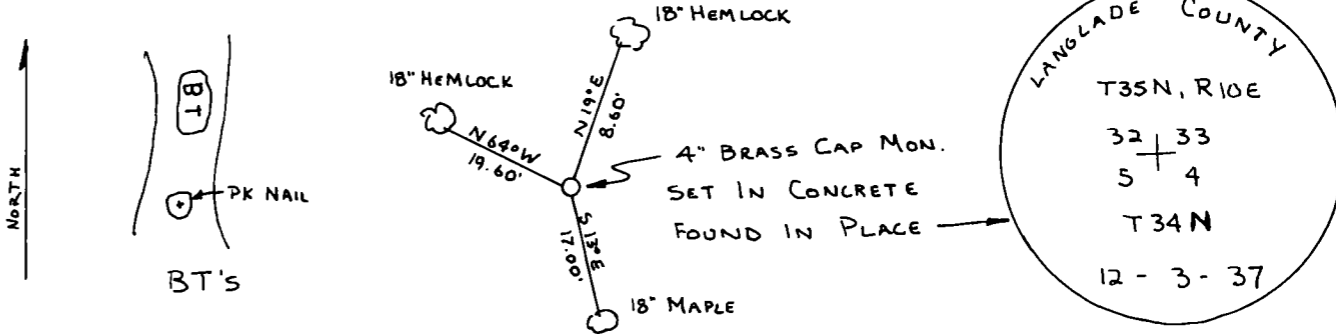
Description of corner evidence found:

FOUND A 4" BRASS CAP MONUMENT SET IN CONCRETE

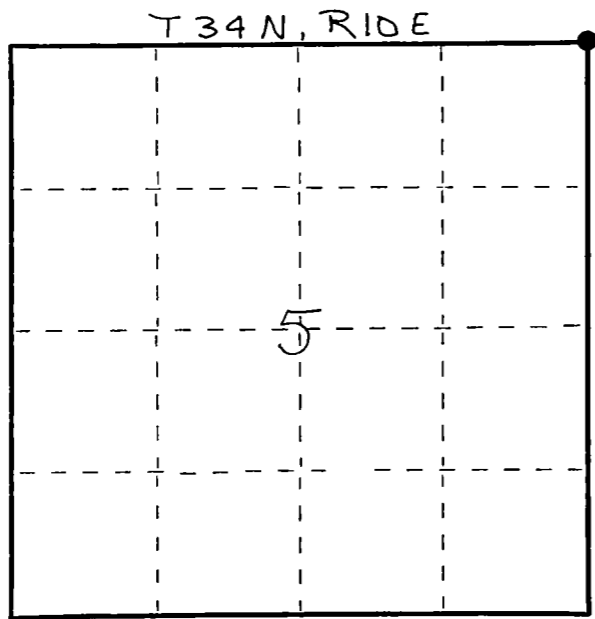


*William F. Kelly*

Description of monument and accessories I established to perpetuate the original location of this corner.



FORM 985 H. C. MILLER CO., MILWAUKEE



○ = Corner monument restored.

Dated at ELCHO, Wis., this 26<sup>th</sup> day of DEC, 19 80.

Signature William F. Kelly Title COUNTY SURVEYOR Registration No. 1098  
(County Surveyor, Registered Land Surveyor, or other duly authorized official)

Office of Register of Deeds, County of....., I hereby certify that the within instrument was filed in this office for record on the..... day of....., 19..... at..... o'clock..... M.

.....  
(Register of Deeds)

By..... Deputy