

CERTIFIED LAND CORNER RESTORATION

Index No. A-19  
34-9

State of Wisconsin }  
County of Lancaster } ss.

I Raymond J. Hallisy, do hereby certify that on the 26th day of November, 1977, I found evidence of the 1/4 corner of 2 & 35 Township 34 & 35, North, Range 9E, Fourth Principal Meridian, as described hereon; and that from this evidence I established a new monument and accessories as described hereon to perpetuate the original location of this corner.

Resident witnesses:

.....  
.....  
.....

History of original corner establishment:

Corner set in the 1930 resurvey.

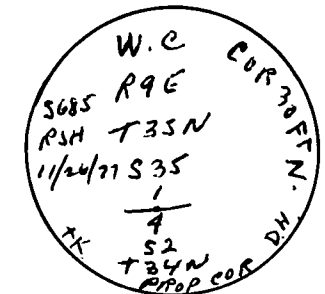
Description of corner evidence found:

1" iron pipe with brass cap south of Highway "Q".

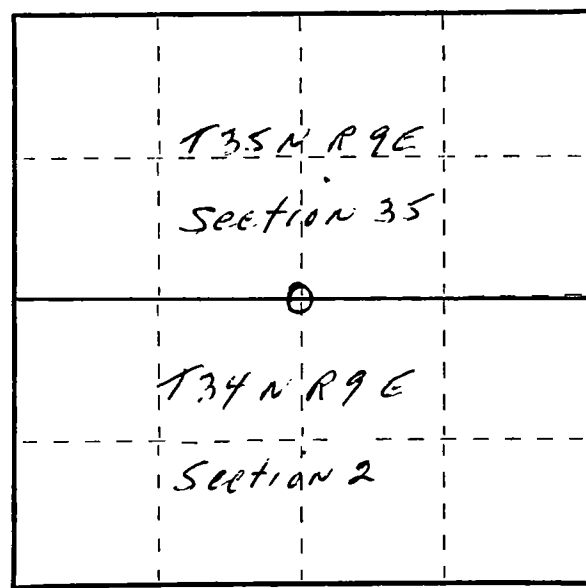
Description of monument and accessories I established to perpetuate the original location of this corner.

New BT's to witness corner

- 10" Hard Maple S65W 15'2"
- 12 Hard Maple S1E 22'7"
- 8" Basswood S31E 14'8"



FORM 985 H. C. MILLER CO., MILWAUKEE



○ = Corner monument restored.

Dated at Antigo, Wis., this 26th day of November, 1977

Signature Raymond J. Hallisy Title land Surveyor Registration No. 5685  
(County Surveyor, Registered Land Surveyor, or other duly authorized official)

Office of Register of Deeds, County of \_\_\_\_\_, I hereby certify that the within instrument was filed in this office for record on the \_\_\_\_\_ day of \_\_\_\_\_, 19\_\_\_\_ at \_\_\_\_\_ o'clock \_\_\_\_\_ M.

(Register of Deeds)

By \_\_\_\_\_ Deputy