

U.S. PUBLIC LAND SURVEY MONUMENT RECORD

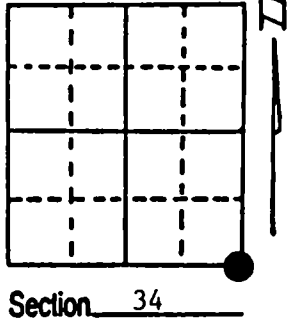
Note: This form is intended and designed to fulfill all requirements of Wisconsin Administrative Code, Chapter A-E 7.08 U.S. Public Land Survey Monument Record (3) (a) (b) (c) (d) (e) (f) (g) (h) (i). An additional sheet may be added if necessary to conform with said requirements.

(a) Corner location: Township 35 North

Range 9 East/West

Town/City/Village Enterprise

County Oneida



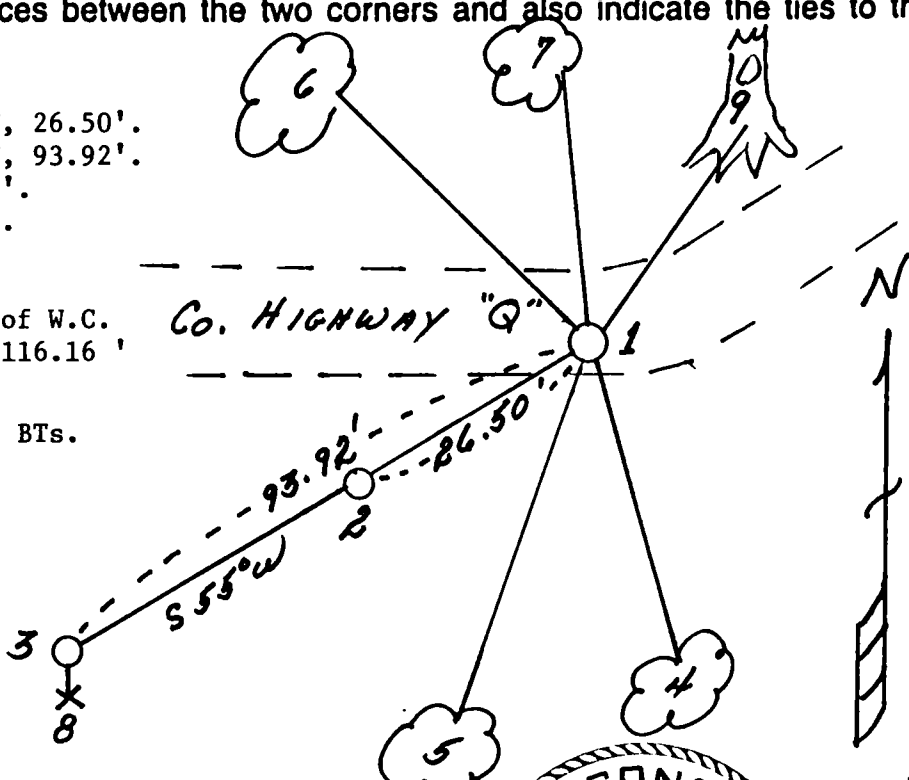
(b) (f) (g) (h) Description of monument found at this corner and if it was accepted, state all evidence (material, testimonial, occupational, plats, records, other monuments) used as a basis for accepting. If not accepted or if nothing was found, state evidence used as basis for establishing location. If reestablished through lost corner proportionate methods, indicate all monuments, distances and directions used to establish. Indicate type of monument found or set and sign post.

- 7/3/1859 - Hiram C. Fellows established this corner at 80.00 chains and set a wood post with 4 BTs:
 8" Elm, N20°E, 10 Links (6.60') 15" Birch, S65°E, 70 Links (46.20')
 8" Sugar, S52°W, 65 Links (42.90') 24" Birch, N85°W, 50 Links (33.00')
- 3/10/1936 - Maine set iron pipe/brass cap from Vaughan's notes/new BTs:
 10" Elm, S48 3/4°E, 94½ Links (62.37') 14" Red Maple, N35¼°E, 1.76 Chs. (116.16')
 8" Elm, N8°E, 59 Links (38.94')
- 10/3/1994 - Milo E. Stefan found two brass capped iron pipe Witness Corners, S55°W, 26.5' and 93.92'. Maine's 14" Red Maple, N35¼°E, 116.16' now a 6' snag, DBH face there - it falls in pond, water too deep to travel. We set railroad spike for corner, made four new BTs and set plastic sign post.

(c) (d) (e) Plan view of corner with ties to at least 4 witness monuments. If in disagreement with previously established corner, show the distances between the two corners and also indicate the ties to the disputed corner.

- 1) Railroad Spike.
- 2) 2" Iron Pipe/Brass Cap S55°W, 26.50'.
- 3) 2" Iron Pipe/Brass Cap S55°W, 93.92'.
- 4) 8" Sugar Maple, S18°E, 90.20'.
- 5) 12" Basswood, S21°W, 119.63'.
- 6) 14" Red Oak, N48°W, 89.61'.
- 7) 12" Red Oak, N12°W, 82.32'.
- 8) Plastic Sign Post, 1' South of W.C.
- 9) 20" Red Maple Snag, N35¼°E, 116.16' (Maine's BT)

Distances to nail in side of BTs.
 Stump blaze scribed "BT".



(i) I, Milo E. Stefan
 (type or print name) certify that the corner location on this record was determined by me or under my direction and control and that this U.S. Public Land Survey Monument Record is correct and complete to the best of my knowledge and belief.

Milo E. Stefan
 Signature

10/11/94
 Date



Stamp

Index No. 2-17
A-17 349

CERTIFIED LAND CORNER RESTORATION

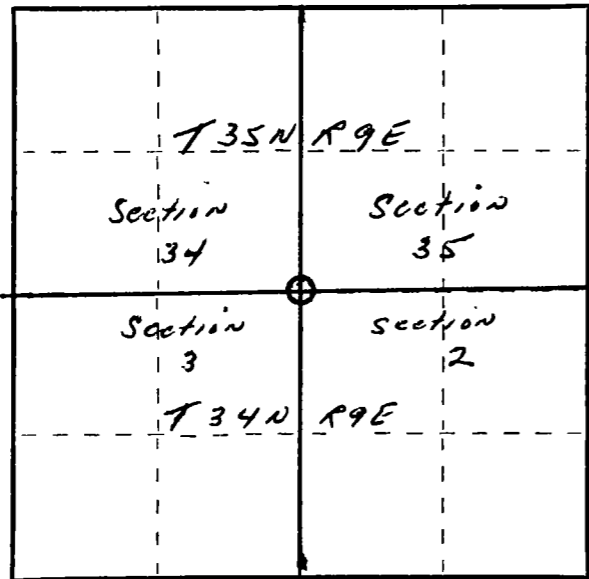
Index No. A-17

State of Wisconsin }
County of Lanai } ss.

I, Raymond Hallisy, do hereby certify that on the 17th day of August, 1924, I found evidence of the Section corner of 34, 35, 3 & 2 Township 34 & 35, North, Range 9E, Fourth Principal Meridian, as described hereon; and that from this evidence I established a new monument and accessories as described hereon to perpetuate the original location of this corner.

Resident witnesses:

.....
.....
.....



○ = Corner monument restored.

History of original corner establishment:

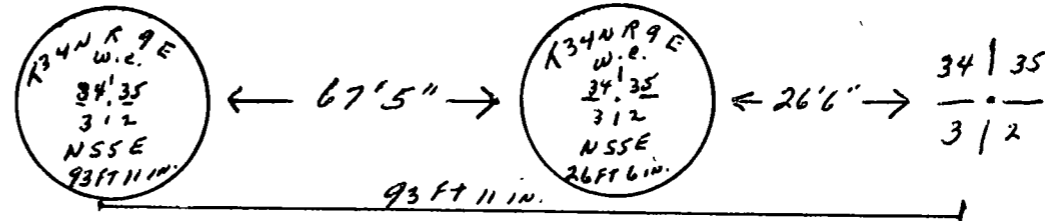
1930 Resurvey
Corner covered by Road Construction

Description of corner evidence found:

BT'S
14" Soft Maple N30°E 181.51 LKS
8" Elm N50°E 72.73 LKS
10" Ash (stump) S50°E 75.85 LKS

Description of monument and accessories I established to perpetuate the original location of this corner.

Set two 2" ~~steel~~ iron pipes with brass caps
N55°E ~~to~~ corner, as witness corners. Corner is in CTH @



Dated at Antigo, Wis., this 17th day of August, 1924.

Signature Raymond Hallisy Title Reg. Land Surveyor Registration No. 5-685
(County Surveyor, Registered Land Surveyor, or other duly authorized official)

Office of Register of Deeds, County of _____, I hereby certify that the within instrument was filed in this office for record on the _____ day of _____, 19____ at _____ o'clock _____ M.

.....
(Register of Deeds)

By..... Deputy