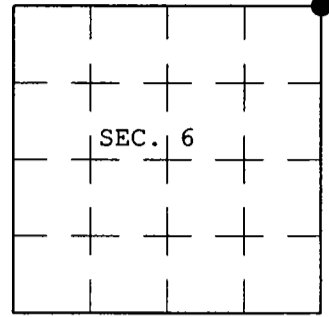


43509310000

U.S. PUBLIC LAND SURVEY MONUMENT RECORD

Note: This form is intended and designed to fulfill all requirements of Wisconsin Administrative Code, Chapter A-E 7.08 U.S. Public Land Survey Monument Record (3) (a) (b) (c) (d) (e) (f) (g) (h) (i). An additional sheet may be added if necessary to conform with said requirements.

(a) CORNER LOCATION: Plane Coordinates
Corner of Secs. 5, 6, 31 & 32 X:
Township 34 & 35 North Y:
Range 9 East of the 4th P.M. Datum:
Town of Parrish County of Langlade



(b) HISTORY OF ORIGINAL CORNER ESTABLISHMENT

Original Surveyor: Hiram C. Fellows Original Accessories:
Date of Survey: Commenced July, 1859 Sugar 7" N.81°W., 50 lks.
Completed July, 1859 Birch 8" N.53°E., 6 lks.
Birch 7" S.14°E., 22 lks.
Birch 10" S.8°W., 5 lks.

(b) (f) (g) (h) Description of monument found at this corner and if it was accepted, state all evidence (material, testimonial, occupational, plats, records, other monuments) used as a basis for accepting. If not accepted or if nothing was found, state evidence used as basis for establishing location. If re-established through lost corner proportionate methods, indicate all monuments, distances and directions used to establish. Indicate type of monument and sign post found or set.

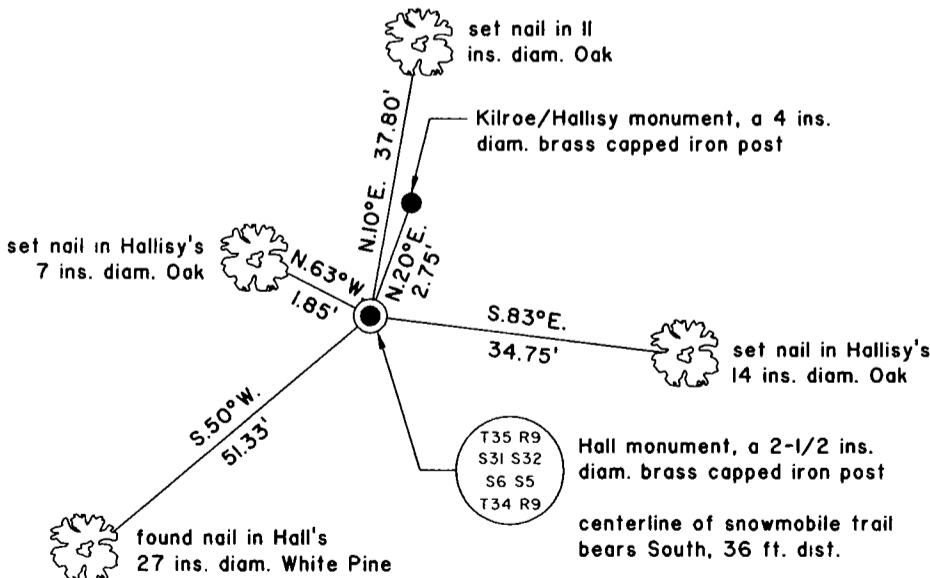
May, 1936: T.H. Kilroe determines the West three miles of the line common to Townships 34 and 35 North, Range 9 East to be lost. He re-establishes the corners on this line by running a straight line between controlling corners. "77.18 chs. set sec. cor. 5-6-31-32, Pine 12" S.46°E., 28.38; Pine 8" S.48-1/2°W., 80.3; Pine 14" N.35°E., 117.9"

December, 1937: H.C. Hall determines the West three miles of the line common to Townships 34 and 35 North, Range 9 East to be lost. He re-establishes the corners on this line by running a rhumb (curved) line between controlling corners. "set official corner common to secs. 31,32,5&6 BTs: W.Pine 15" S.56°E., .26-1/2; W.Pine 12" S.49-1/2°W., .766; W.Pine 10" S.84°W., 1.11-1/2; W.Pine 12" N.24°W., 1.60"

March 7, 1981: Raymond Hallisy prepares a U.S. Public Land Survey Monument Record and accepts the Kilroe monument with no indication that he recovered Hall's notes.

January 2, 2004: I found and accepted Hall's monument, a 2-1/2 ins. diam. iron post, projecting 26 ins. above the ground with brass cap mkd. as shown below. Hall's method is accepted practice in re-establishing lost corners of the U.S. Public Land Survey System. The corner is witnessed by Hall's W.Pine snag, 22 ins. diam., bears S.84°W., 73-1/2 ft. dist. and Hall's W.Pine snag, 27 ins. diam., bears S.50°E., 18 ft. dist. I established accessories as shown below and set a plastic sign post bearing North, 1 ft. dist.

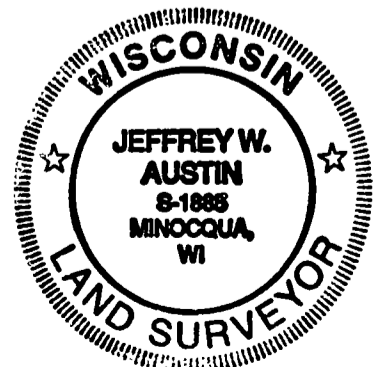
(c) (d) (e) Plan view of corner with ties to at least 4 witness monuments. If in disagreement with previously established corner, show the distances between the two corners and also indicate the ties to the disputed.



(i) I, Jeffrey W. Austin, Registered Land Surveyor No. S-1885, hereby certify upon honor that the corner location on this record was determined by me or under my direction and control and that this U.S. Public Land Survey Monument Record is correct and complete to the best of my knowledge and belief.

Handwritten signature of Jeffrey W. Austin.

21 FEB 2004
Date



INDEX NO. A-5

Signature

Date

CERTIFIED LAND CORNER RESTORATION

Index No. A-5

State of Wisconsin }
 County of Lancaster } ss.

I, Raymond J. Hallisy, do hereby certify that on the 7th day of March, 1981, I found evidence of the Section corner of 5, 6, 31, & 32 Township 34 & 35, North, Range 9E, Fourth Principal Meridian, as described hereon; and that from this evidence I established a new monument and accessories as described hereon to perpetuate the original location of this corner.

Resident witnesses:

.....

History of original corner establishment:

Corner set in the 1930 resurvey.

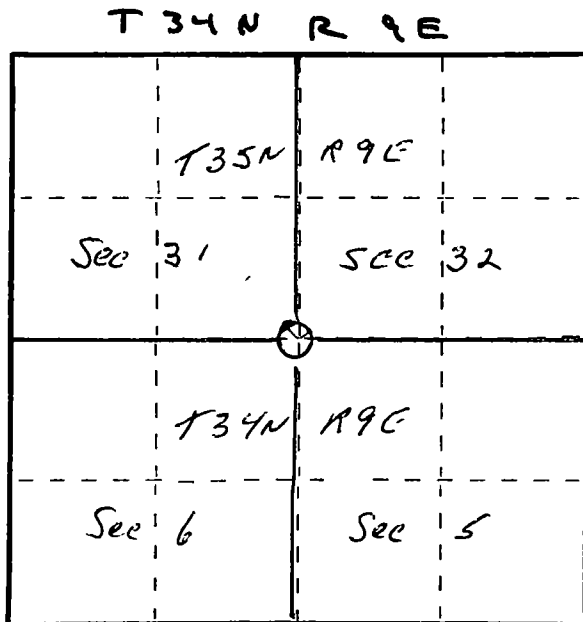
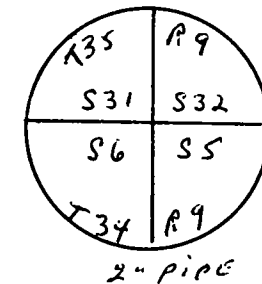
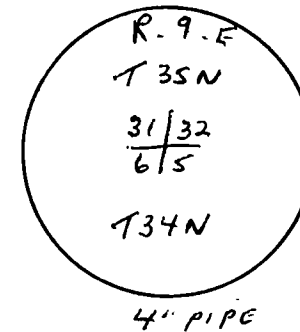
Description of corner evidence found:

4" pipe with brass cap, 2" pipe with brass cap S11W 2'8".
 Old BT's to 4" pipe
 24" White pine S46E 28.38 Links
 20" White pine S48W 80.32 Links

Description of monument and accessories I established to perpetuate the original location of this corner.

New BT's to 4" pipe

6" Red Oak S50W 2'3"
 4" Red Oak N20W 5'5"
 12" Red Oak S84E 3'13"



○ = Corner monument restored.

Dated at Antigo, Wis., this 7th day of March, 1981.

Signature Raymond J. Hallisy Title Reg. Surveyor Registration No. S-685
 (County Surveyor, Registered Land Surveyor, or other duly authorized official)

Office of Register of Deeds, County of....., I hereby certify that the within instrument was filed in this office for record on the.....day of....., 19..... at..... o'clock..... M.

.....
 (Register of Deeds)

By.....Deputy