

4 341435 0000 2017

U.S. PUBLIC LAND SURVEY MONUMENT RECORD

Note: This form is intended and designed to fulfill all requirements of Wisconsin Administrative Code, Chapter A-E 7.08 U.S. Public Land Survey Monument Record (3)(a-i).

WISCRS - Langlade County

N: 427,435.90 USft

E: 737,026.06 USft

WISCRS - Forest County

N: 500,671.42 USft

E: 888,229.70 USft

Datum: NAD 83(2011)

GNSS Method: WISCORS RTN

	SEC. 2		
	T33N R14E		

(b) HISTORY OF ORIGINAL CORNER ESTABLISHMENT

Original Surveyor: Alfred Millard

Original Accessories:

Elm 10" N26°E, 32 lks.

Elm 16" N20°W, 15 lks.

Elm 14" S40°E, 11 lks.

Lynn 18" S25°W, 46 lks.

Date of Survey Commenced: August, 1857

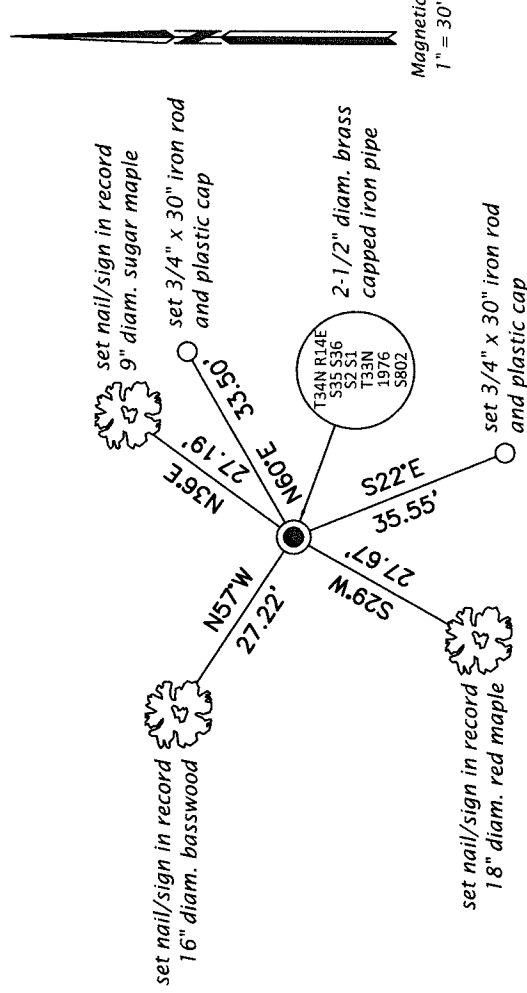
Completed: August, 1857

(b)(f)(g)(h) Description of monument found at this corner and if it was accepted, state all evidence (material, testimonial, occupational, plats, records, other monuments) used as a basis for accepting. If not accepted or if nothing was found, state evidence used as basis for establishing location. If re-established through lost corner proportionate methods, indicate all monuments, distances and directions used to establish. Indicate type of monument and sign post found or set.

1976: "Land Corner Restoration" survey by Jean F. Resvick, RLS filed as Langlade County Surveyor Record #10900. Corner is marked by a brass-capped iron pipe with the following bearing trees: sugar maple 5" N35°E, 27.3'; sugar maple 4" S10°E, 10.8'; red maple 6" S41°W, 28.2'; basswood 11" N58°W, 27.4'.

November 5, 2016: I found and accepted the record monument, a 2-1/2" diam. iron pipe with a 3" diam. brass cap projecting 6" above a ring of stone. I found or established accessories as shown below. A USFS steel sign post bears North, 1.3 ft. I set a white vinyl sign post bearing East, 1.3 ft.

(c)(d)(e) Plan view of corner with ties to at least 4 witness monuments. If in disagreement with previously established corner, show the distances between the two corners and also indicate the ties to the disputed.



(i) I, Jeffrey W. Austin, Professional Land Surveyor No. S-1885, hereby certify that the corner location on this record was determined by me or under my direction and control and that this U.S. Public Land Survey Monument Record is correct and complete to the best of my knowledge and belief.

(Handwritten Signature)
Signature

May 6, 2017
Date

