

4341434 0020 2017

U.S. PUBLIC LAND SURVEY MONUMENT RECORD

Note: This form is intended and designed to fulfill all requirements of Wisconsin Administrative Code, Chapter A-E 7.08 U.S. Public Land Survey Monument Record (3)(a-l).

WISCRS - Langlade County

N: 427,336.75 USft

E: 729,079.09 USft

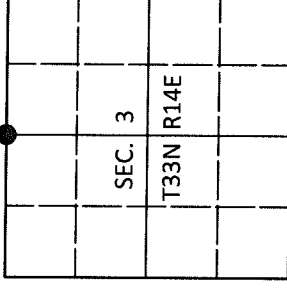
WISCRS - Forest County

N: 500,611.64 USft

E: 880,282.36 USft

Datum: NAD 83(2011)

GNSS Method: WISCORS STATIC



(b) HISTORY OF ORIGINAL CORNER ESTABLISHMENT

Original Surveyor: Alfred Millard

Original Accessories:

Date of Survey Commenced: August, 1857
 Completed: August, 1857

Y. Birch 24" N52°W, 64 lks.
 Y. Birch 20" S30°E, 45 lks.

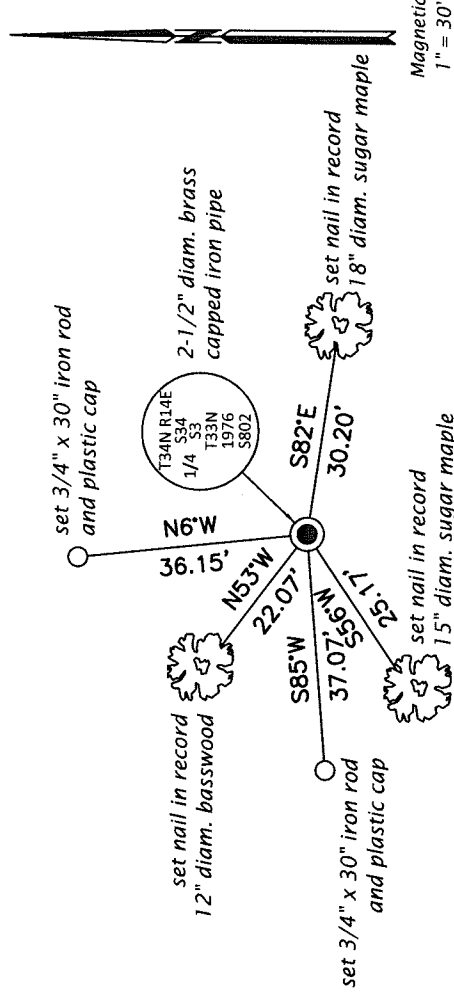
(b)(f)(g)(h) Description of monument found at this corner and if it was accepted, state all evidence (material, testimonial, occupational, plats, records, other monuments) used as a basis for accepting. If not accepted or if nothing was found, state evidence used as basis for establishing location. If re-established through lost corner proportionate methods, indicate all monuments, distances and directions used to establish. Indicate type of monument and sign post found or set.

This is a perpetuation of a previous USPLS Monument Record by William F. Kelly, RLS dated December 27, 1987 and filed in the office of the Langlade County Surveyor. A complete history of the corner can be found on the previous monument record. I accept the previous location as a true and faithful perpetuation or reestablishment of the original corner location and further perpetuate it as follows.

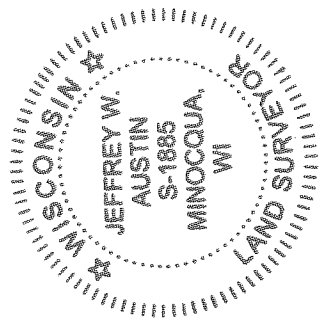
This is a perpetuation of a previous USPLS Monument Record by Alan D. Harrison, RLS dated October 26, 1994 and filed in the office of the Langlade County Surveyor. A complete history of the corner can be found on the previous monument record. I accept the previous location as a true and faithful perpetuation or reestablishment of the original corner location and further perpetuate it as follows.

November 4, 2016: I found and accepted the record monument, a 2-1/2" diam. iron pipe with a 3" diam. brass cap projecting 3" above the ground surface. The record bearing tree at N45°E is now a stump, the tree at S77°W is gone. I found or established accessories as shown below. A USFS steel sign post bears North, 0.5 ft. I set a white vinyl sign post bearing Southwest, 1.2 ft.

(c)(d)(e) Plan view of corner with ties to at least 4 witness monuments. If in disagreement with previously established corner, show the distances between the two corners and also indicate the ties to the disputed.



(i) I, Jeffrey W. Austin, Professional Land Surveyor No. S-1885, hereby certify that the corner location on this record was determined by me or under my direction and control and that this U.S. Public Land Survey Monument Record is correct and complete to the best of my knowledge and belief.



[Signature]
 Signature
 May 4, 2017
 Date