

U. S. PUBLIC LAND SURVEY MONUMENT RECORD

INSTRUCTIONS:

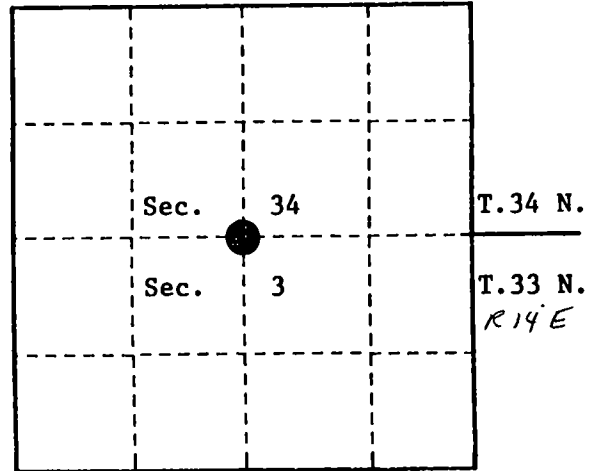
This record shall show the location of the corner and shall include all of the following nine elements (a through i).

- (a) Identify the corner by reference to the U.S. public land survey system.  
 ○ = Corner monument restored.

Quarter Corner to Sections 3 and 34,  
 T.33-34N., R.14E., Langlade and  
 Forest Counties, WI.

State Plane Coordinates  
 Wisconsin North Zone  
 79863.56878-N  
 2294981.34714-E

Geographic Coordinates  
 45-22-42.67918-N  
 088-43-46.25053-W



- (b) Describe any record evidence, monument evidence, occupational evidence, testimonial evidence or any other material evidence you considered, and whether the monument was found or placed.

Original survey in 1857 by Alfred Millard, set wood post and the following bearing trees; Yellow Birch, 24", N.52°W., 64 links, Yellow Birch, 20", S.30°E., 45 links.

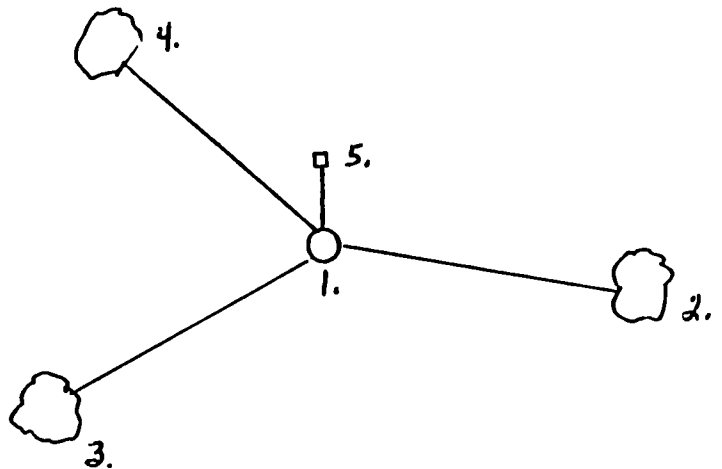
In 1976, Jean Resvick, R.L.S., found a scribed 4" x 4" wood post and stump remains from both original bearing trees. Replaced wood post with a 2" x 36" galvanized iron pipe with a brass cap stamped to identify corner. Blazed and scribed new bearing trees; Sugar, 15", S.83°E., 30.25 feet, Basswood, 10", N.54°W., 22.28 feet, Steel Sign Post, North, 0.50 feet.

On October 22 1993, Alan Harrison, R.L.S., found monument and bearing trees as set by Resvick in 1976. Blazed and scribed 1 new bearing tree; Sugar, 9", S.57°W., 25.36 feet.

- (c) In the plan view drawing below, provide reference ties to at least 4 witness monuments, or, if the location is within a municipality, to at least 2 witness monuments. (witness monuments shall be made of concrete, natural stone, iron or other equally durable material.)

- (d) Show a plan view drawing depicting the relevant monuments and reference ties which is sufficient in detail to enable accurate relocation of the corner monument if the corner monument is disturbed. Indicate north.

1. 2" x 36" galvanized iron pipe with brass cap stamped to identify corner.
2. Sugar, 15", S.83°E., 30.25 feet.
3. Sugar, 9", S.57°W., 25.36 feet.
4. Basswood, 10", N.54°W., 22.28 feet.
5. Steel Sign Post, North, 0.50 feet.



(e) Describe any material discrepancy between the location of the corner as restored or reestablished and the location of that corner as previously restored or reestablished by distance and direction. Show the discrepancy on the plan view drawing under (d), above. Show the distances between the corner as previously restored or reestablished and (1) the corner as restored or reestablished, and (2) to at least 2 of the witness monuments shown on the drawing in (d), above.

None

(f) Was the corner restored through acceptance of (1) an obliterated evidence location, or, (2) a found perpetuated location?

(2)

(g & h) Was the corner reestablished through lost corner proportionate methods? If so, show the method, including the directions and distances to other public land survey corners used as evidence or used for proportioning in determining the corner location?

No

(1) I, Alan D. Harrison

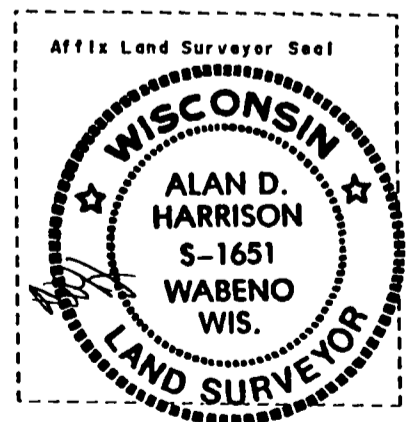
(type or print name) certify that the corner location shown on this record was determined by me or under my direction and control and that this U.S. Public Land Survey Monument Record is correct and complete to the best of my knowledge and belief.

Signature

Date

CERTIFICATE READY FOR FILING:

District Ranger



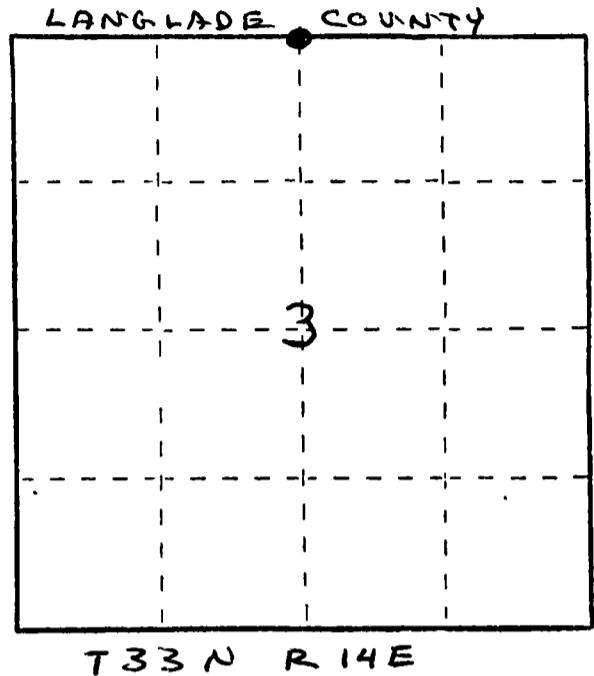
# U. S. PUBLIC LAND SURVEY MONUMENT RECORD

**INSTRUCTIONS:** This record shall show the location of the corner and shall include all of the following nine elements (a through i).

- (a) Identify the corner by reference to the U.S. public land survey system.  
 O = Corner monument restored.

ORIGINAL CORNER ESTABLISHED BY JAMES L NOWLIN IN APRIL 1865

CORNER PERPETUATED BY S 802 IN 1976

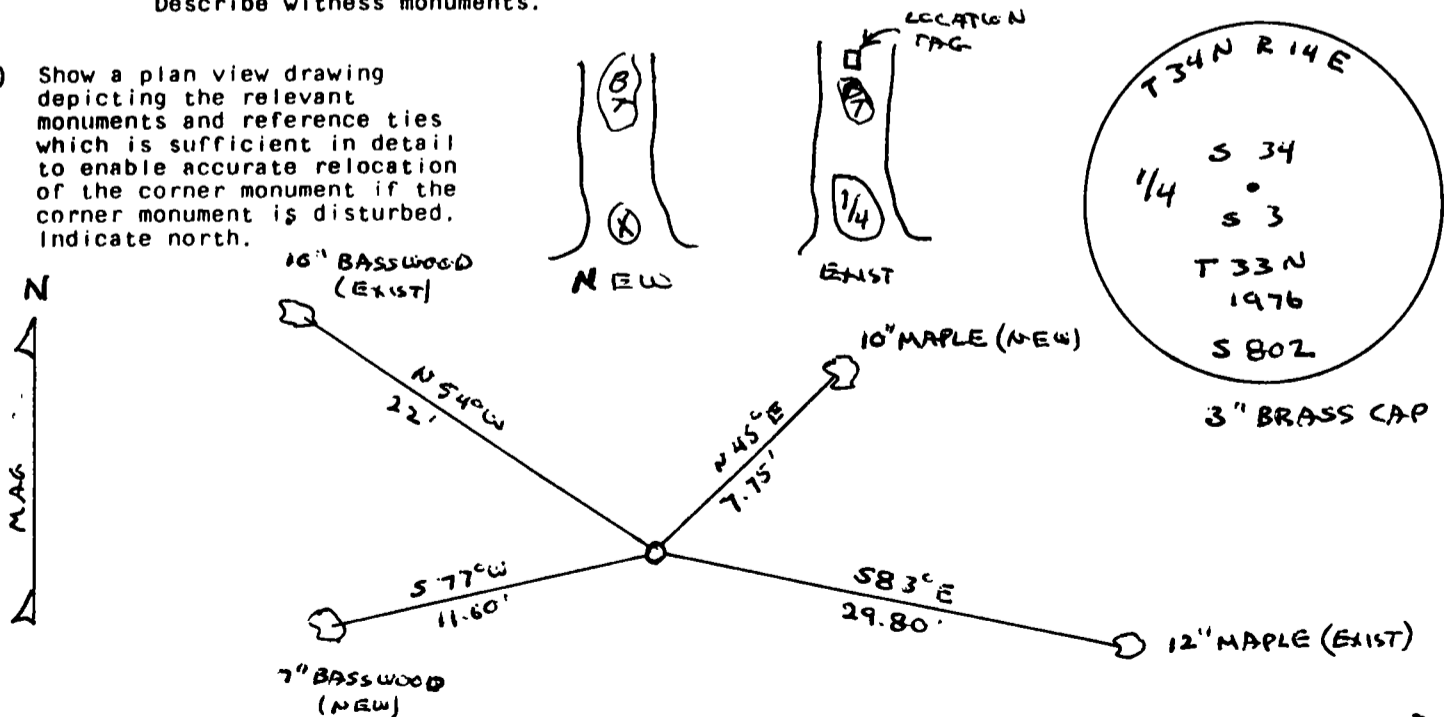


- (b) Describe any record evidence, monument evidence, occupational evidence, testimonial evidence or any other material evidence you considered, and whether the monument was found or placed.

LOCATED 3" BRASS CAP, REMARKED EXIST WIT. TREES AND MARKED NEW WIT. TREES

- (c) In the plan view drawing below, provide reference ties to at least 4 witness monuments, or, if the location is within a municipality, to at least 2 witness monuments. (Witness monuments shall be made of concrete, natural stone, iron or other equally durable material.) Describe witness monuments.

- (d) Show a plan view drawing depicting the relevant monuments and reference ties which is sufficient in detail to enable accurate relocation of the corner monument if the corner monument is disturbed. Indicate north.



(e) Describe any material discrepancy between the location of the corner as restored or reestablished and the location of that corner as previously restored or reestablished by distance and direction. Show the discrepancy on the plan view drawing under (d), above. Show the distances between the corner as previously restored or reestablished and (1) the corner as restored or reestablished, and (2) to at least 2 of the witness monuments shown on the drawing in (d), above.

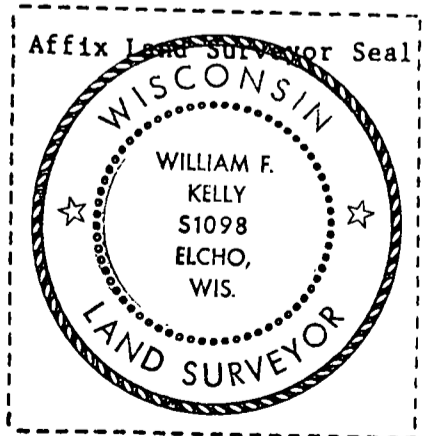
NONE

(f) Was the corner restored through acceptance of (1) an obliterated evidence location, or, (2) a found perpetuated location?

(2)

(g&h) Was the corner reestablished through lost corner proportionate methods? If so, show the method, including the directions and distances to other public land survey corners used as evidence or used for proportioning in determining the corner location?

NO



(1) I, WILLIAM F. KELLY  
(type or print name) certify that the corner location shown on this record was determined by me or under my direction and control and that this U.S. Public Land Survey Monument Record is correct and complete to the best of my knowledge and belief.

William F. Kelly 12-27-87  
Signature Date