

4341433 0020 2017

U.S. PUBLIC LAND SURVEY MONUMENT RECORD

Note: This form is intended and designed to fulfill all requirements of Wisconsin Administrative Code, Chapter A-E 7.08 U.S. Public Land Survey Monument Record (9)(a-l).

(a) CORNER LOCATION
 1/4 Cor. of Secs. 4 & 33
 Township 33 & 34 North
 Range 14 East of the 4th P.M.
 Town of Wolf River/Freedom
 County of Langlade/Forest

WISCRS - Langlade County
 N: 427,277.10 USft
 E: 723,779.81 USft
 WISCRS - Forest County
 N: 500,578.25 USft
 E: 874,982.85 USft
 Datum: NAD 83(2011)
 GNSS Method: WISCORS RTN

		SEC. 4	
		T33N R14E	

(b) HISTORY OF ORIGINAL CORNER ESTABLISHMENT

Original Surveyor: Alfred Millard

Original Accessories:

Hemlock 14" S59°W, 10 lks.
 Spruce 18" N40°E, 7 lks.

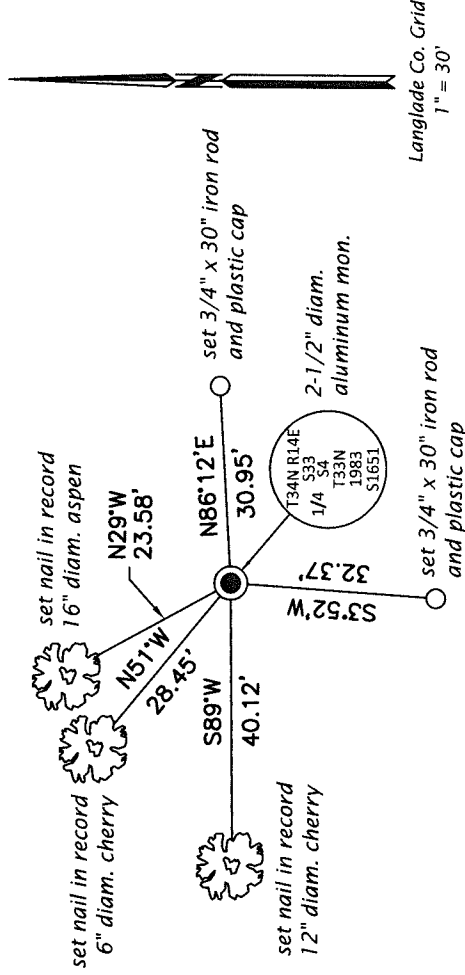
Date of Survey
 Commenced: August, 1857
 Completed: August, 1857

(b)(f)(g)(h) Description of monument found at this corner and if it was accepted, state all evidence (material, testimonial, occupational, plats, records, other monuments) used as a basis for accepting. If not accepted or if nothing was found, state evidence used as basis for establishing location. If re-established through lost corner proportionate methods, indicate all monuments, distances and directions used to establish. Indicate type of monument and sign post found or set.

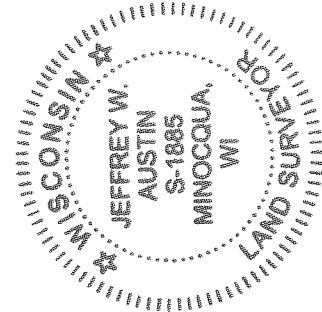
This is a perpetuation of a previous USPLS Monument Record by Alan D. Harrison, RLS dated October 26, 1994 and filed in the office of the Langlade County Surveyor. A complete history of the corner can be found on the previous monument record. I accept the previous location as a true and faithful perpetuation or reestablishment of the original corner location and further perpetuate it as follows.

November 12, 2016: I found and accepted the record monument, a 2-1/2" diam. aluminum pipe with a 3-1/4" diam. aluminum cap projecting 12" above a ring of stone. The monument leans South as it's grown into a large mass of roots I was unable to remove. All measurements were taken to a nail set coinciding with the location of the monument when plumb. I set a DEEP-1 magnet adjacent to the monument. I found or established accessories as shown below. A USFS steel sign post bears South, 2.0 ft. I set a white vinyl sign post bearing Southeast, 0.9 ft.

(c)(d)(e) Plan view of corner with ties to at least 4 witness monuments. If in disagreement with previously established corner, show the distances between the two corners and also indicate the ties to the disputed.



95 ft. North of Creek



(i) I, Jeffrey W. Austin, Professional Land Surveyor No. S-1885, hereby certify that the corner location on this record was determined by me or under my direction and control and that this U.S. Public Land Survey Monument Record is correct and complete to the best of my knowledge and belief.

[Signature]
 Signature
 May 4, 2017
 Date