

4341433 0000 2017

U.S. PUBLIC LAND SURVEY MONUMENT RECORD

Note: This form is intended and designed to fulfill all requirements of Wisconsin Administrative Code, Chapter A-E 7.08 U.S. Public Land Survey Monument Record (3)(a-l).

(a) CORNER LOCATION
 Cor. of Secs. 3, 4, 33 & 34
 Township 33 & 34 North
 Range 14 East of the 4th P.M.
 Town of Wolf River/Freedom
 County of Langlade/Forest

WISCONSIN - Langlade County
 N: 427,299.09 USft
 E: 726,431.53 USft
 WISCONSIN - Forest County
 N: 500,587.10 USft
 E: 877,634.65 USft
 Datum: NAD 83(2011)
 GNSS Method: WISCORS STATIC

		SEC. 4	
		T33N R14E	

(b) HISTORY OF ORIGINAL CORNER ESTABLISHMENT

Original Surveyor: Alfred Millard
 Date of Survey: August, 1857
 Completed: August, 1857

Original Accessories:
 Sugar 24" N50°W, 42 lks.
 Hemlock 10" N25°E, 48 lks.
 Lynn 12" S49°W, 37 lks.
 Y. Birch 40" S45°E, 30 lks.

(b)(f)(g)(h) Description of monument found at this corner and if it was accepted, state all evidence (material, testimonial, occupational, plats, records, other monuments) used as a basis for accepting. If not accepted or if nothing was found, state evidence used as basis for establishing location. If re-established through lost corner proportionate methods, indicate all monuments, distances and directions used to establish. Indicate type of monument and sign post found or set.

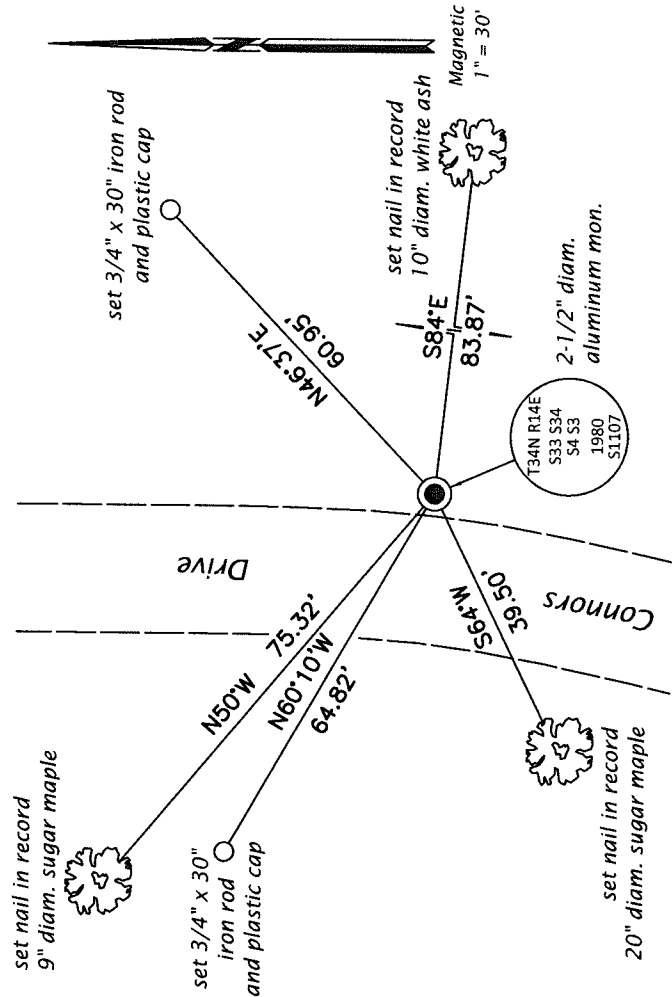
This is a perpetuation of a previous USPLS Monument Record by Victor H. Hedman, RLS dated October 18, 1962 and filed in the office of the Langlade County Surveyor. A complete history of the corner can be found on the previous monument record. I accept the previous location as a true and faithful perpetuation or reestablishment of the original corner location and further perpetuate it as follows.

This is a perpetuation of a previous USPLS Monument Record by Jean F. Resvick, RLS dated June 15, 1976 and filed in the office of the Langlade County Surveyor. A complete history of the corner can be found on the previous monument record. I accept the previous location as a true and faithful perpetuation or reestablishment of the original corner location and further perpetuate it as follows.

This is a perpetuation of a previous USPLS Monument Record by Alan D. Harrison, RLS dated October 26, 1994 and filed in the office of the Langlade County Surveyor. A complete history of the corner can be found on the previous monument record. I accept the previous location as a true and faithful perpetuation or reestablishment of the original corner location and further perpetuate it as follows.

November 4, 2016: I found and accepted the record monument, a 2-1/2" diam. aluminum pipe with a 3-1/4" diam. aluminum cap 24" beneath the ground surface. I set a 3/4" diam., 20" long rebar over the aluminum cap. The record y. birch at N16°E is now a stump. A power pole bears S53°E, 5 ft. I found or established accessories as shown below. A USFS steel sign post bears East, 7.0 ft. I set a white vinyl sign post bearing East, 1.0 ft.

(c)(d)(e) Plan view of corner with ties to at least 4 witness monuments. If in disagreement with previously established corner, show the distances between the two corners and also indicate the ties to the disputed.



(i) I, Jeffrey W. Austin, Professional Land Surveyor No. S-1885, hereby certify that the corner location on this record was determined by me or under my direction and control and that this U.S. Public Land Survey Monument Record is correct and complete to the best of my knowledge and belief.

Signature: *[Handwritten Signature]*
 Date: May 4, 2017

