

U. S. PUBLIC LAND SURVEY MONUMENT RECORD

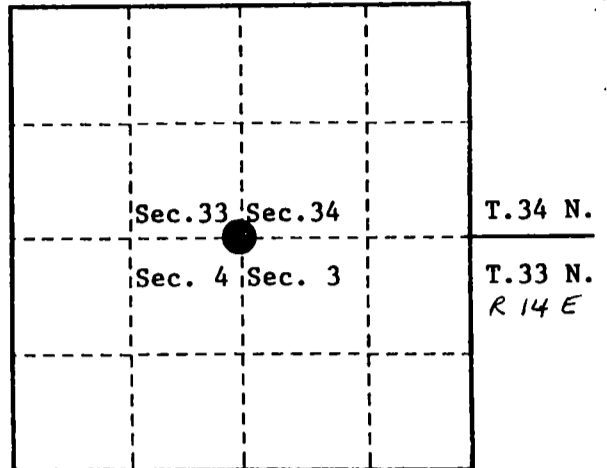
INSTRUCTIONS:

This record shall show the location of the corner and shall include all of the following nine elements (a through i).

- (a) Identify the corner by reference to the U.S. public land survey system.
 - - Corner monument restored.

Section Corner to Sections 3, 4, 33 and 34, T.33-34N., R.14E., Langlade County, WI., Forest County, WI.

State Plane Coordinates
 Wisconsin North Zone
 79793.57089-N
 2292334.45408-E
 Geographic Coordinates
 45-22-42.40449-N
 088-44-23.34075-W



- (b) Describe any record evidence, monument evidence, occupational evidence, testimonial evidence or any other material evidence you considered, and whether the monument was found or placed.

Original survey in 1857 by Alfred Millard. Set wood post and the following bearing trees; Linn, 12", S.49°W., 37 links, Sugar, 24", N.50°W., 42 links, Yellow Birch, 40", S.45°E., 30 links, Hemlock, 10", N.25°E., 48 links.

In 1962, Victor Hedman, R.L.S., found a 2" diameter iron pipe and the original Hemlock stump, scribed N.25°E., 32 feet. Replaced iron pipe with a 2" x 60" galvanized iron pipe with a brass cap stamped to identify corner. Blazed and scribed new bearing trees; Yellow Birch, 5", N.15°E., 74.58 feet, Elm, 7", S.47°E., 21.78 feet, Sugar, 12", S.63°W., 39.60 feet, Sugar, 14", N.52°W., 55.77 feet, center-line of road, West, 14 feet.

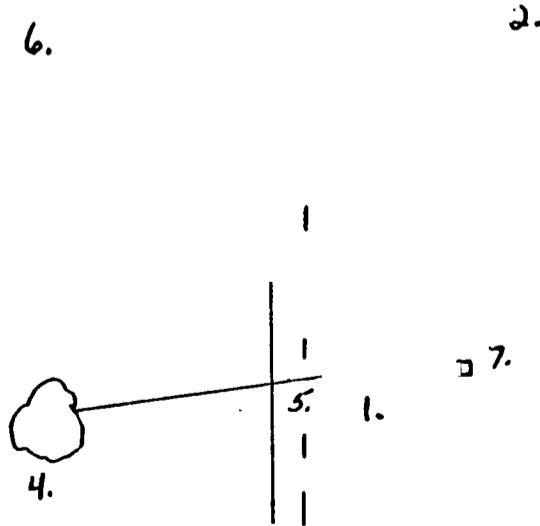
In 1976 Jean Resvick, R.L.S., found monument damage and replaced it with a 2" x 36" aluminum monument. Placed nails in 1962 bearing trees for the following new measurements; Yellow Birch, 8", N.16°E., 75.00 feet, Elm, 10", S.47°E., 21.65 feet, Sugar, 15", S.63°W., 39.30 feet, Elm, 17", N.52°W., 55.80 feet.

On September 29 1983, Alan Harrison, R.L.S., found monument and bearing trees as noted in 1962 and 1976. Elm bearing trees are dead. Made 2 new bearing trees; White Ash, 9", S.81°E., 83.82 feet, Sugar, 8", N.49°W., 75.25 feet, Steel Sign Post, East, 6.3 feet.

- (c) In the plan view drawing below, provide reference ties to at least 4 witness monuments, or, if the location is within a municipality, to at least 2 witness monuments. (witness monuments shall be made of concrete, natural stone, iron or other equally durable material.)

- (d) Show a plan view drawing depicting the relevant monuments and reference ties which is sufficient in detail to enable accurate relocation of the corner monument if the corner monument is disturbed. Indicate north.

1. 2" x 36" aluminum monument with tablet stamped to identify corner.
2. Yellow Birch, 9", N.16°E., 75.00 feet.
3. White Ash, 9", S.81°E., 83.82 feet.
4. Sugar, 17", S.63°W., 39.30 feet.
5. Center-line of road, West, 14 feet.
6. Sugar, 9", N.49°W., 75.25 feet.
7. Steel Sign Post, East, 6.3 feet.



F.R. #2126

(e) Describe any material discrepancy between the location of the corner as restored or reestablished and the location of that corner as previously restored or reestablished by distance and direction. Show the discrepancy on the plan view drawing under (d). above. Show the distances between the corner as previously restored or reestablished and (1) the corner as restored or reestablished, and (2) to at least 2 of the witness monuments shown on the drawing in (d), above.

None

(f) Was the corner restored through acceptance of (1) an obliterated evidence location, or, (2) a found perpetuated location?

(2)

(g & h) Was the corner reestablished through lost corner proportionate methods? If so, show the method, including the directions and distances to other public land survey corners used as evidence or used for proportioning in determining the corner location?

No

(1) I, Alan D. Harrison

(type or print name) certify that the corner location shown on this record was determined by me or under my direction and control and that this U.S. Public Land Survey Monument Record is correct and complete to the best of my knowledge and belief.

Alan D. Harrison

Signature

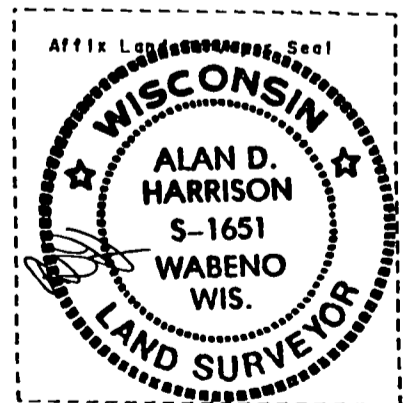
10/26/94

Date

CERTIFICATE READY FOR FILING:

Sue Vap

District Ranger



CERTIFIED LAND CORNER RESTORATION

State of Wisconsin }
County of Landglade } ss.

I Jean F. Resvick, do hereby certify that on the 1st day of June 1976, I found evidence of the Northwest Section corner of Section 3 Township 33 North Range 14 East Fourth Principal Meridian, as described hereon; and that from this evidence I established a new monument and accessories as described hereon to perpetuate the original location of this corner:

Description of original monument and accessories and subsequent restorations: Surveyed in 1857 by Alfred Millard. 80.00 chains west between Sections 3 and 34, set post. Hemlock 10, N25E, 48 lks. Lynn 12, S49W, 37 lks. Y. Birch 40, S45E, 30 lks. Sugar 24, N50W, 42 lks. Monumented in 1962 by Jean Resvick and Victor Hedman and recorded in Landglade County, Document number 202744, dated February 6, 1964, Volume 1, Page 9. Yellow Birch 5, N15-30E, 74.40 ft. Elm 7, S47-30E, 21.65 ft. Sugar 12, S63W, 39.30 ft. Sugar 14, N52W, 55.80 ft.

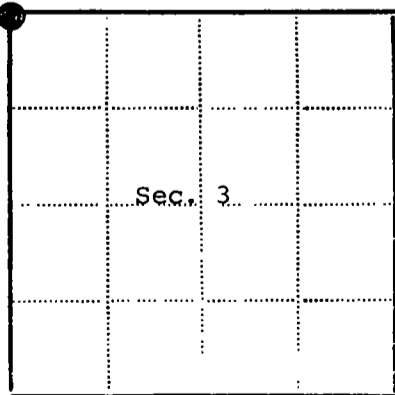
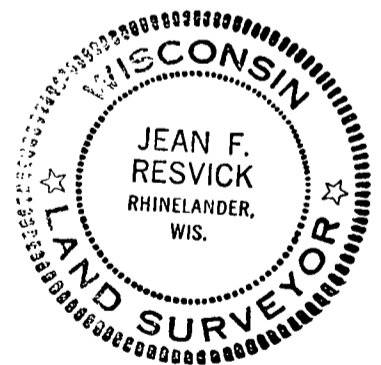
Description of corner evidence found:

Monument set in 1962 bent over and brass cap removed. Hemlock stump found in 1962 with scribing, now down and only pieces Bearing tree set in 1962 in good shape although specie and distance did not agree.

Description of monument and accessories I established to perpetuate the location of this corner:

Replace bent monument with 2 inch diameter aluminum pipe monument, 3 feet long with cast aluminum base and aluminum cap stamped: T34N, R14E, S33, S34, S3, T33N, 1976, S-802

Placed nails in bearing trees being the same as scribed in 1962 Yellow Birch 8, N16E, 75.00 ft. Elm 10, S47E, 21.65 ft. Sugar 15, S63W, 39.30 ft. Elm 17, N52W, 55.80 ft. Monument set almost flush with ground. Set steel sign post NW of monument.



● - Corner monument restored
□ -

Resident witnesses.....

Dated at Rhinelander Wisconsin, this 15 day of June 1976..

Signature Jean F. Resvick Title Land Surveyor
(County Surveyor, Registered Land Surveyor, or other duly authorized official)

Surveyors Registration No. S-802.....

Office of.....County of.....

I hereby certify that the within instrument was filed in this office for record on the.....day of.....19....., and was filed in Book No.....Page No.....of County Records.

Signature.....Title.....

CERTIFIED LAND CORNER RESTORATION

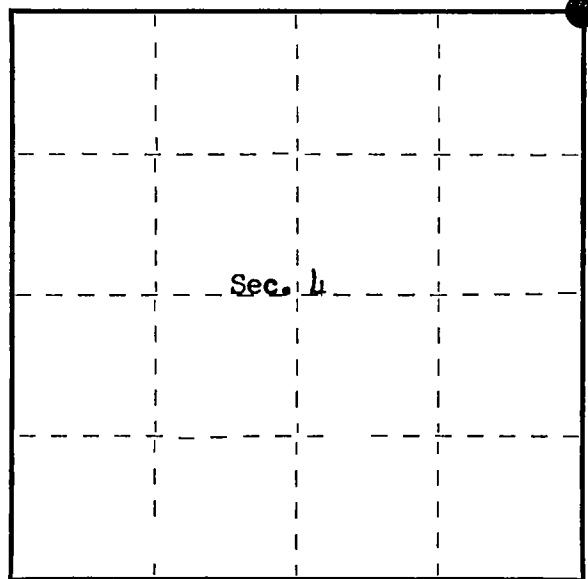
202744

33-14 Vol 1 - Page 9
Index No. A-13

State of Wisconsin }
County of Langlade } ss.

I Jean F. Reswick, do hereby certify that on the 18th day of October, 1962, I found evidence of the Section corner of 3, 4, 33, 34 Township 34 & 33, North, Range 11E, Fourth Principal Meridian, as described hereon; and that from this evidence I established a new monument and accessories as described hereon to perpetuate the original location of this corner.

Resident witnesses:



○ = Corner monument restored.

History of original corner establishment:

Surveyed in 1857 by Alfred Millard

Set wood post

Hemlock	Linn	Y. Birch	Sugar
10"	12"	40"	24"
N25°E	S49W	S45°E	N50°W
48 lks.	37 lks.	30 lks.	42 lks.

Description of corner evidence found:

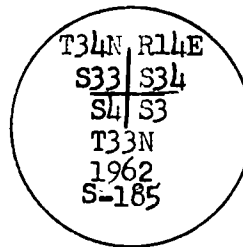
1. 2 in. diam. iron pipe 3 ft. long

2. Hemlock 20" stump 4 ft. high, scribed, N25°E, 32 ft. from iron pipe

4/15/15 D. LUSTY FOUND MONUMENT IN GOOD COND. 1.8' BELOW SURFACE APPROX 3' E OF E. EDGE PAVEMENT. SET MAG NA IN NW FACE POWER POLE SET, 4.58' FROM EAST 6.94' TO THE WEST EDGE OF USE'S STEEL CHANNEL POST LANGLADE CO COORDS NAD83(2011) N 427299.11 E 726431.51

Description of monument and accessories I established to perpetuate the original location of this corner.

Replaced iron pipe which was badly rusted with galvanized iron pipe 5 ft. long, 2 in. inside diam. center filled with concrete, flanged at bottom with brass cap marked:



Set iron pipe along side of monument; Blazed and scribed the following new bearing trees:

Y. birch	5"	N15°30'E	113 lks.
Elm	7"	S47°30'E	33 lks.
Sugar	12"	S63°W	60 lks.
Sugar	14"	N52°W	84 1/2 lks.

Dated at Rhineland, Wis., this _____ day of _____, 19_____

Signature Jean F. Reswick Title Cadastral Surveyor - U. S. Government
Victor H. Hedman Title Cadastral Surveyor Registration No. S-185*
(County Surveyor, Registered Land Surveyor, or other duly authorized official) *Reviewed and Approved

Office of Register of Deeds, County of Langlade, I hereby certify that the within instrument was filed in this office for record on the 6 day of Feb, 1964 at 9:00 o'clock P M.

Althea
(Register of Deeds)

By _____ Deputy

Recording Fee Paid 1.50

