

4341431 0020 2017

U.S. PUBLIC LAND SURVEY MONUMENT RECORD

Note: This form is intended and designed to fulfill all requirements of Wisconsin Administrative Code, Chapter A-E 7.08 U.S. Public Land Survey Monument Record (3)(a-l).

WISCRS - Langlade County

N: 427,181.19 USft
E: 713,177.87 USft

WISCRS - Forest County

N: 500,534.89 USft
E: 864,380.59 USft

Datum: NAD 83(2011)

GNSS Method: WISCORS RTN

		SEC. 6	
		T33N R14E	

(b) HISTORY OF ORIGINAL CORNER ESTABLISHMENT

Original Surveyor: Alfred Millard

Original Accessories:

Date of Survey Commenced: August, 1857
Completed: August, 1857

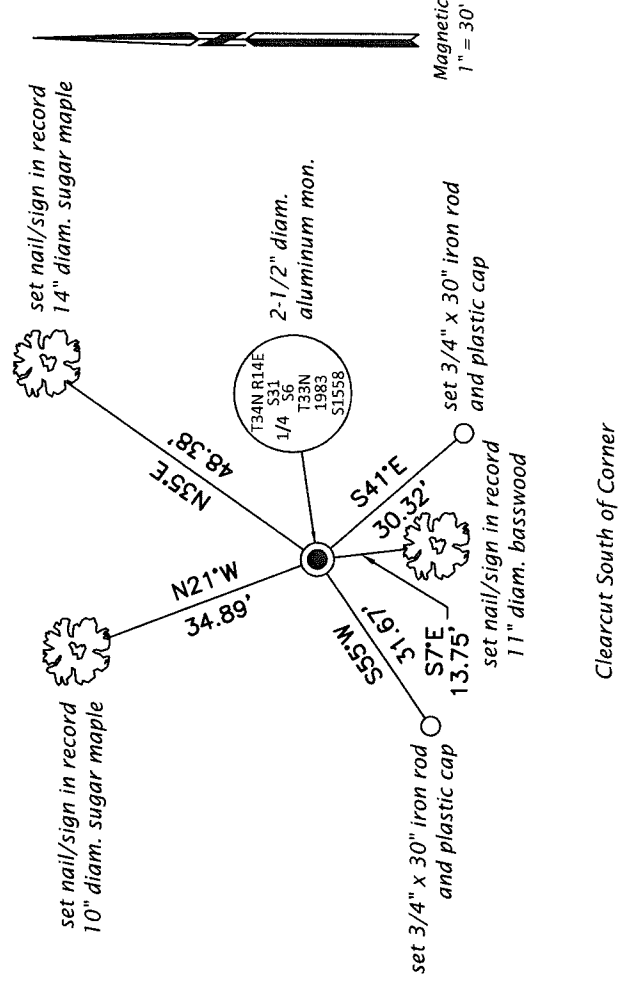
Sugar 10" N48°W, 23 lks.
Hemlock 14" S60°E, 16 lks.

(b)(f)(g)(h) Description of monument found at this corner and if it was accepted, state all evidence (material, testimonial, occupational, plats, records, other monuments) used as a basis for accepting. If not accepted or if nothing was found, state evidence used as basis for establishing location. If re-established through lost corner proportionate methods, indicate all monuments, distances and directions used to establish. Indicate type of monument and sign post found or set.

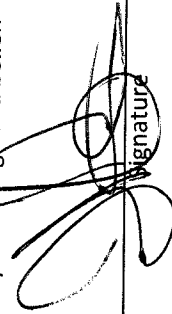
This is a perpetuation of a previous USPLS Monument Record by Milo E. Stefan, RLS dated February 19, 1985 and filed in the office of the Langlade County Surveyor. A complete history of the corner can be found on the previous monument record. I accept the previous location as a true and faithful perpetuation or reestablishment of the original corner location and further perpetuate it as follows.

November 6, 2016: I found and accepted the record monument, a 2-1/2" diam. aluminum pipe with a 3-1/4" diam. aluminum cap projecting 8" above the ground surface. I set a DEEP-1 magnet adjacent to the monument. I found or established accessories as shown below. A USFS steel sign post bears East, 2.2 ft. I set a white vinyl sign post bearing Southwest, 1.1 ft.

(c)(d)(e) Plan view of corner with ties to at least 4 witness monuments. If in disagreement with previously established corner, show the distances between the two corners and also indicate the ties to the disputed.



(i) I, Jeffrey W. Austin, Professional Land Surveyor No. S-1885, hereby certify that the corner location on this record was determined by me or under my direction and control and that this U.S. Public Land Survey Monument Record is correct and complete to the best of my knowledge and belief.


Signature

May 4, 2017
Date

