

4341335 0020 2012

# U.S. PUBLIC LAND SURVEY MONUMENT RECORD

(AS REQUIRED BY S. A-E 7.08, WI ADM. CODE)

HISTORY OF ORIGINAL CORNER ESTABLISHMENT AND SUBSEQUENT RESTORATIONS AND DESCRIPTION OF ANY RECORD, MONUMENT, OCCUPATIONAL, TESTIMONIAL, OR OTHER EVIDENCE CONSIDERED

1857 - ALFRED MILLARD, SURVEYOR, SET QUARTER SECTION POST  
WITNESSES:

HEMLOCK 12" N43°E 32 LINKS  
HEMLOCK 11" S45°E 5 LINKS

1962 - SPERHAKE, SURVEYOR, R.L.S. #483, SET CORNER 12/11/62

1969 - RAYMOND HALLISY, SURVEYOR R.L.S. #685, FOUND A 1 1/4" IRON PIPE WITH 4" STAMPED CAP.

WITNESSES:

BASSWOOD 8" S40°W 27 FEET 9 INCHES  
BASSWOOD 12" N14°W 24 FEET  
B.T.'S FACED AT BASE OF TREE AND MARKED BT

CORNER WAS (CHECK ALL THAT APPLY)

- RESTORED THROUGH ACCEPTANCE OF AN OBLITERATED LOCATION
- RESTORED THROUGH ACCEPTANCE OF A FOUND PERPETUATED LOCATION
- CONSIDERED A LOST CORNER AND REESTABLISHED THROUGH LOST CORNER PROPORTIONATE METHODS (INCLUDING A PLAN VIEW DRAWING SHOWING DISTANCES AND DIRECTIONS TO OTHER PUBLIC LAND SURVEY CORNERS USED FOR PROPORTIONING AND DETERMINING THE CORNER LOCATION)
- RESTORED OR REESTABLISHED IN A LOCATION THAT DIFFERS FROM A PREVIOUS RESTORATION OF REESTABLISHMENT (INCLUDE A PLAN VIEW DRAWING AND INDICATE WHAT WAS SET AND/OR FOUND)

DESCRIBE THE MONUMENT AND ACCESSORIES USED TO PERPETUATE THE LOCATION OF THIS CORNER. (INCLUDE A PLAN VIEW DRAWING AND INDICATE WHAT WAS SET AND/OR FOUND)

FOUND 4" STAMPED ALUMINUM CAP AS CALLED FOR IN HALLISY'S 1969 CERTIFIED LAND CORNER RESTORATION FORM.

FOUND THE FOLLOWING ACCESSORIES:

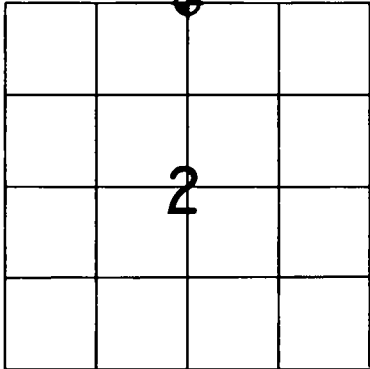
BASSWOOD 8" S42°W 28' (FEET) TO FACE OF TREE

SET THE FOLLOWING WITNESSES:

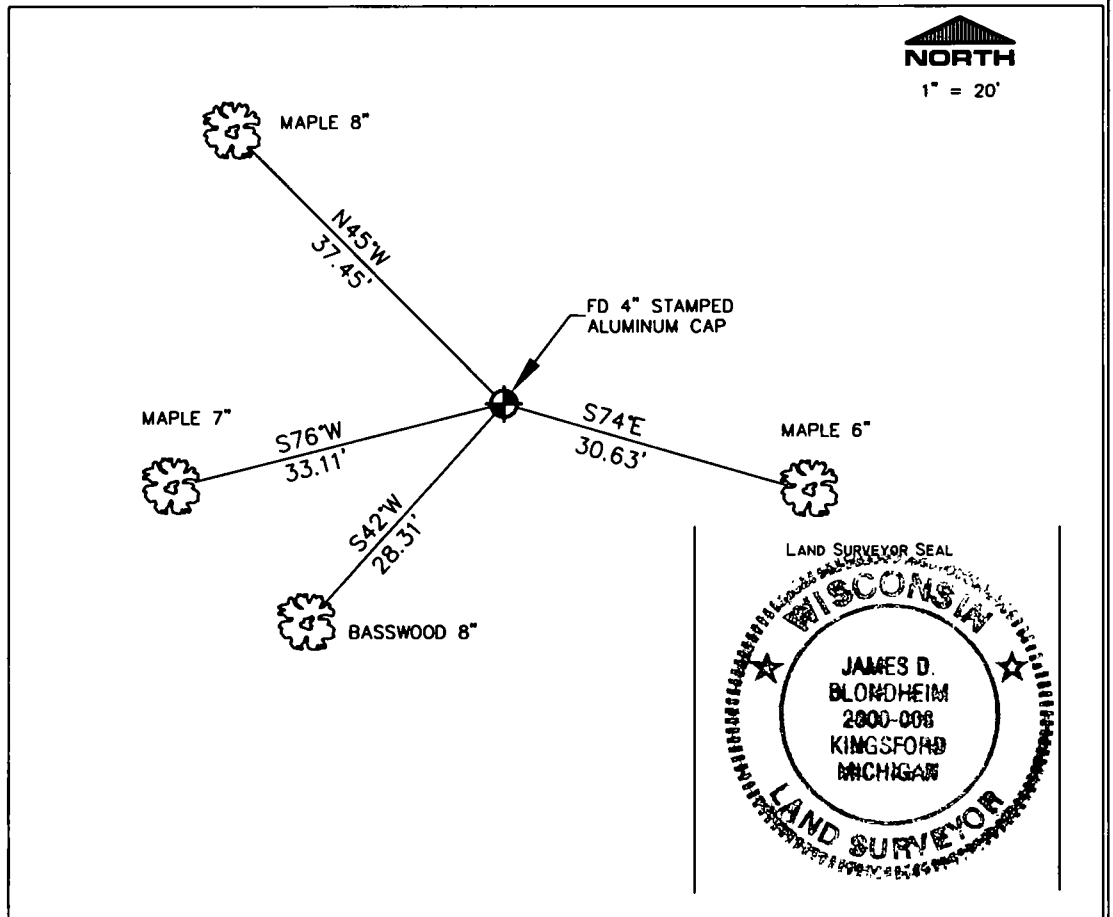
MAPLE 6" S74°E 30.63' (FEET) TO A DOUBLE HEADED NAIL IN BASE OF TREE  
BASSWOOD 8" S42°W 28.31' (FEET) TO A DOUBLE HEADED NAIL IN BASE OF TREE  
MAPLE 7" S76°W 33.11' (FEET) TO A DOUBLE HEADED NAIL IN BASE OF TREE  
MAPLE 8" N45°W 37.45' (FEET) TO A DOUBLE HEADED NAIL IN BASE OF TREE

NOTE: ALL TREES HAVE NEW CHEST & STUMP BLAZES.

THE NORTH ONE-QUARTER  
CORNER OF SECTION 2,  
T. 33 N., R. 13 E.,  
FOURTH PRINCIPAL MERIDIAN,  
LANGLADE COUNTY, WISCONSIN



⊙ = LOCATION OF CORNER



I, JAMES D. BLONDHEIM RLS S-2800-008

(TYPE OR PRINT NAME) CERTIFY THAT THE CORNER LOCATION SHOWN ON THIS ABOVE RECORD WAS DETERMINED BY ME OR UNDER MY DIRECTION AND CONTROL AND THAT THIS U.S. PUBLIC LAND SURVEY MONUMENT RECORD IS CORRECT AND COMPLETE TO THE BEST OF MY KNOWLEDGE AND BELIEF

INDEX No A-19

SIGNATURE

DATE

8/21/2012

RECORD #

A19-33-13

LANGLADE COUNTY SURVEYORS OFFICE

DATE FILED: 8/29/12 BY: D. RUST

A19  
33-13

CERTIFIED LAND CORNER RESTORATION

33-13

Index No. A-19

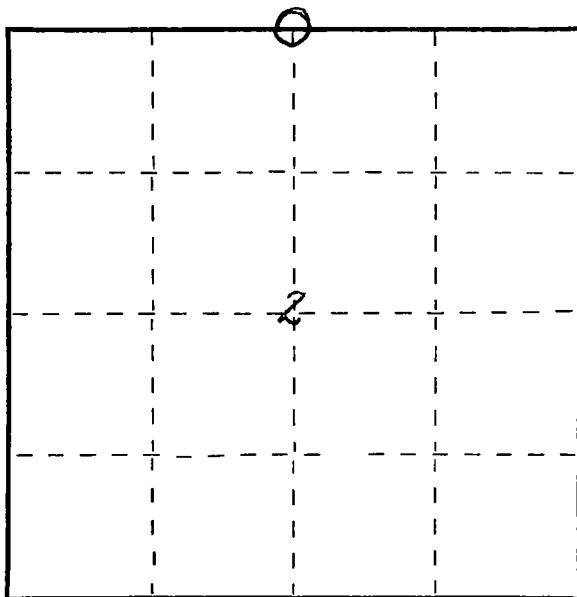
State of Wisconsin }  
County of Lancaster } ss.

I, Raymond J. Hallsy, do hereby certify that on the 28th day of June, 19 69, I found evidence of the North 1/4 corner of Section 2 Township 33, North, Range 13E, Fourth, Principal Meridian, as described hereon; and that from this evidence I established a new monument and accessories as described hereon to perpetuate the original location of this corner.

Resident witnesses:

JERRY WEIX

FORM 985 H. C. MILLER CO., MILWAUKEE



○ = Corner monument restored.

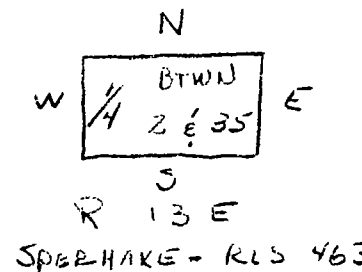
History of original corner establishment:

Corner set by Sperhake R.L.S. 463 12/11/62

Description of corner evidence found:

1 1/4" iron pipe with 4" cap

T 33 - 34 N



Description of monument and accessories I established to perpetuate the original location of this corner.

No monument set

B.T.'s to his pipe

Basswood 8" SH0% 27 feet 9 inches  
Basswood 12" 114% 24 Feet

B.T.'s faced at base of tree and marked BT

Dated at Antigo, Wis., this 28th day of June, 19 69.

Signature Raymond J. Hallsy Title Reg. Land Surveyor Registration No. 8-685  
(County Surveyor, Registered Land Surveyor, or other duly authorized official)

Office of Register of Deeds, County of \_\_\_\_\_, I hereby certify that the within instrument was filed in this office for record on the \_\_\_\_\_ day of \_\_\_\_\_, 19 \_\_\_\_\_ at \_\_\_\_\_ o'clock \_\_\_\_\_ M.

(Register of Deeds)

By \_\_\_\_\_ Deputy