

CERTIFIED LAND CORNER RESTORATION

Index No. A-17

State of Wisconsin }  
 County of LANGLADÉ } ss.

I WILLIAM F. KELLY, do hereby certify that on the 29<sup>th</sup> day of MARCH, 1979, I found evidence of the NW corner of SEC. 2 Township 33, North, Range 13 E, Fourth Principal Meridian, as described hereon; and that from this evidence I established a new monument and accessories as described hereon to perpetuate the original location of this corner.

Resident witnesses:

.....  
 .....  
 .....

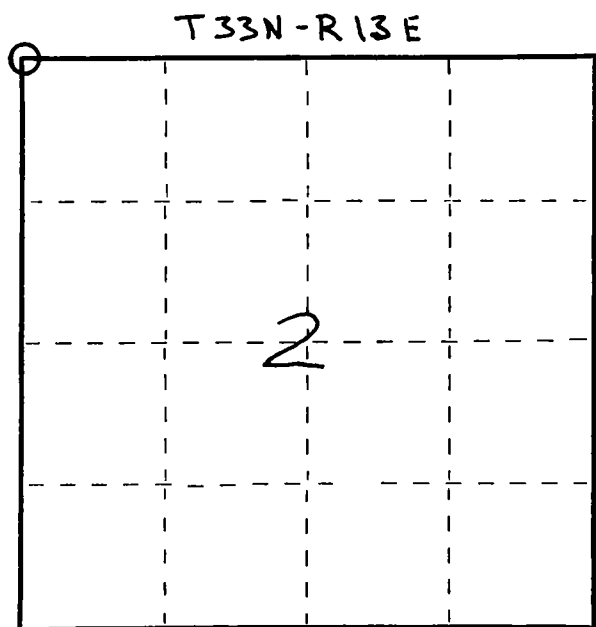
History of original corner establishment:

Description of corner evidence found:  
LOCATED NW COR. OF SEC. 2, T33N, R13E.  
FOUND 4" ALUM. CAP SET BY SPERHAKE IN 1962  
FOR KIMBERLY CLARK CORP.



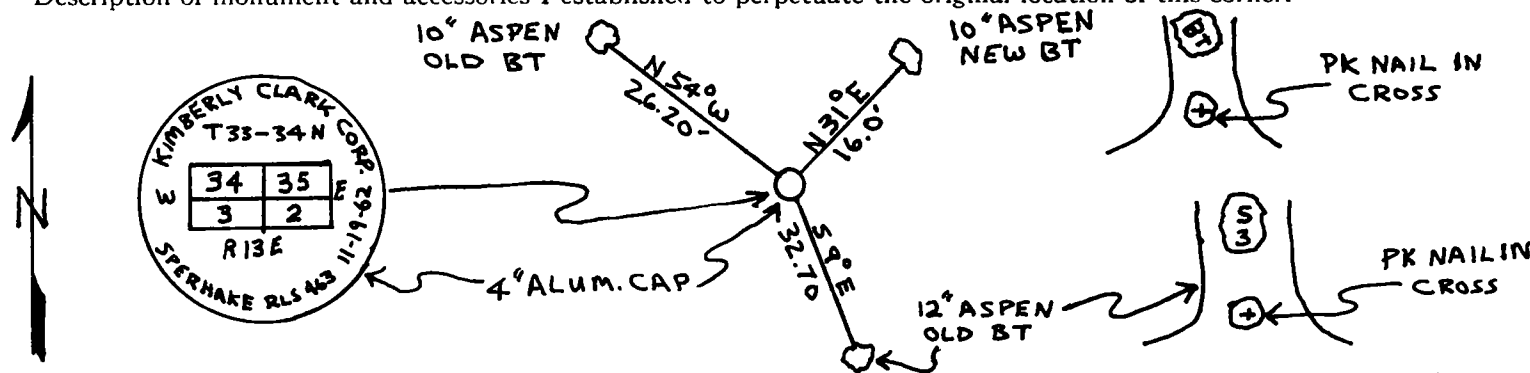
*William F. Kelly*

FORM 985 M. C. MILLER CO., MILWAUKEE



○ = Corner monument restored.

Description of monument and accessories I established to perpetuate the original location of this corner.



Dated at ELCHO, Wis., this 29<sup>th</sup> day of MARCH, 1979.

Signature William F. Kelly Title COUNTY SURVEYOR Registration No. S-1098  
 (County Surveyor, Registered Land Surveyor, or other duly authorized official)

Office of Register of Deeds, County of ....., I hereby certify that the within instrument was filed in this office for record on the ..... day of ....., 19..... at ..... o'clock ..... M.

.....  
 (Register of Deeds)

By ..... Deputy