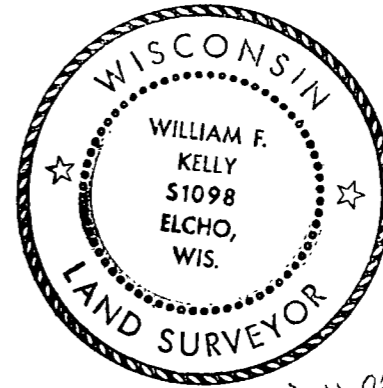


CERTIFIED LAND CORNER RESTORATION

Index No. A-6

State of Wisconsin }
County of LANGLADE } ss.

History of original corner establishment:



William F. Kelly

I WILLIAM F. KELLY, do hereby certify that on the 13th day of OCTOBER, 1974, I found evidence of the West 1/8 corner of SECTIONS 32 & 5 Township 34N & 33N, North, Range 13E, Fourth Principal Meridian, as described hereon; and that from this evidence I established a new monument and accessories as described hereon to perpetuate the original location of this corner.

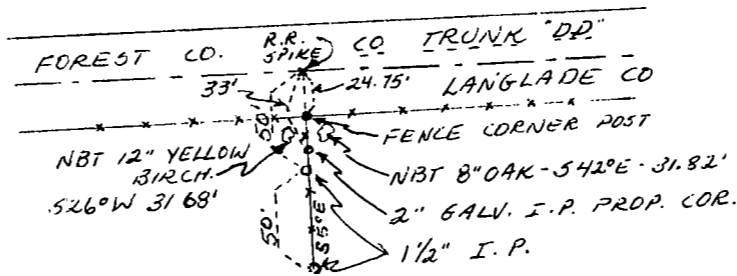
Description of corner evidence found:

R.R. SPIKE IN ROAD PAVEMENT ON LINE BETWEEN SECTION CORNER AND 1/4 SECTION CORNER IDENTIFIED BY RESIDENT WITNESS AS W/8 CORNER.

Resident witnesses:

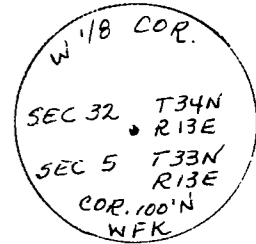
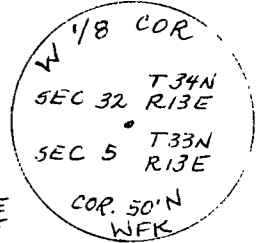
A. Ison

Description of monument and accessories I established to perpetuate the original location of this corner.



I SET 1/2" I.P. WITH BRASS CAP AS REFERENCE CORNERS TO THE W/8 CORNER SECTION 32 T34N-R13E / 5 T33N-R13E

BRASS CAPS MARKED:



NEW BEARING TREES BLAZED NBT CHEST HIGH AND MARKED WITH A + AT BASE.

Dated at ELCHO, Wis., this 13th day of OCTOBER, 1974.

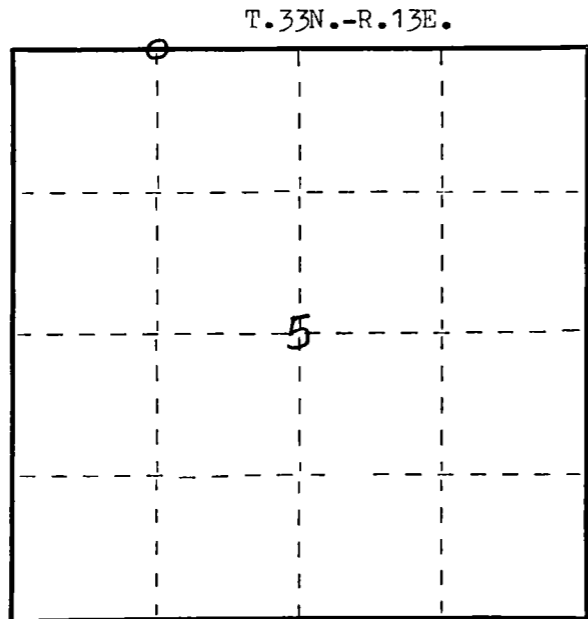
Signature William F. Kelly Title REGISTERED LAND SURVEYOR Registration No. S. 1098
(County Surveyor, Registered Land Surveyor, or other duly authorized official)

Office of Register of Deeds, County of _____, I hereby certify that the within instrument was filed in this office for record on the _____ day of _____, 19____ at _____ o'clock _____ M.

(Register of Deeds)

By _____ Deputy

FORM 985 H. C. MILLER CO., MILWAUKEE



○ = Corner monument restored.