

CERTIFIED LAND CORNER RESTORATION

34-12

Index No. ~~V-23-225~~
V-W-237

State of Wisconsin }
County of LAUGLADE } ss.

I RAYMOND J. HALLISY, do hereby certify that on the 7th day of JANUARY, 1966, I found evidence of the ATTACHED CORNER corner of 36 Township 34N, North, Range 12E, Fourth Principal Meridian, as described hereon; and that from this evidence I established a new monument and accessories as described hereon to perpetuate the original location of this corner.

History of original corner establishment:

- PRESENT { 1. HEADER CORNER ON EAST SEC LINE ON SOUTH SHORE OF PICKEREL LAKE
- SEE SKETCH { 2. E 1/4 CORNER
3. CENTER-NORTH 1/16 CORNER

Description of corner evidence found:

See Attached Record of Survey #10253

Resident witnesses:

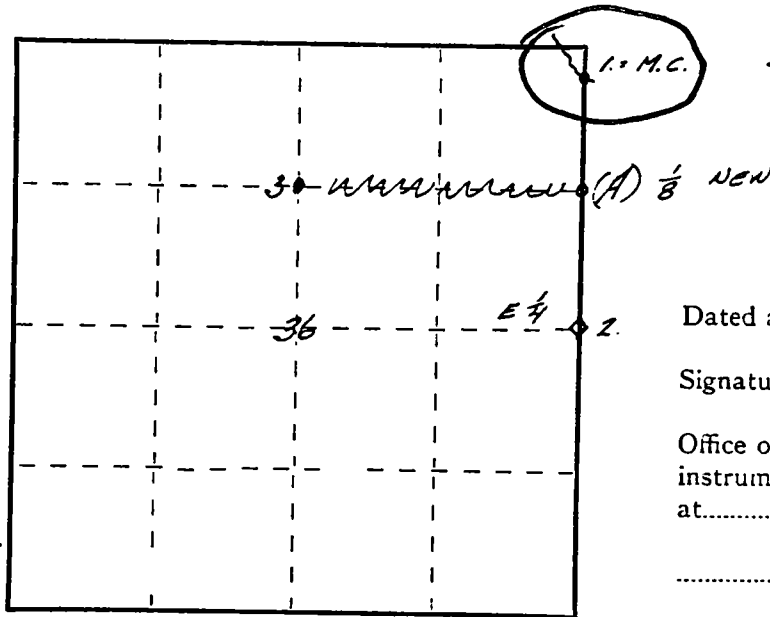
- ROBERT BECKER - SHAWANO, WISC
- EUGENE ZEUSKE - " "
- FRANCIS QUINN - " "

Description of monument and accessories I established to perpetuate the original location of this corner.

(A) ESTABLISH 1/8 CORNER BETWEEN E 1/4 CORNER AND M.C. O

B RUN TRUE LINE N 1/8 ON EAST SECTION LINE AND CTR N 1/16 CORNER ON N-S QUARTER LINE

ALL MEASUREMENTS, DISTANCES, BEARINGS AND FIELD WORK ARE DESCRIBE ON ATTACHED COPIES.



Dated at ANTIGO, Wis., this 3 day of MAY, 1966.

Signature Raymond J. Hallisy Title Ant. Plat. Fossil - W.C.S.
(County Surveyor, Registered Land Surveyor, or other duly authorized official) Registration No. 5-685

Office of Register of Deeds, County of _____, I hereby certify that the within instrument was filed in this office for record on the _____ day of _____, 19____ at _____ o'clock _____ M.

(Register of Deeds)

By _____ Deputy

○ = Corner monument restored.

Re-Survey Notes of Portions of
Section 36, T 34 N R 12 E,
Langlade Co., Wisconsin

Date: January 7, 1966

Instrument: Robert J. Becker, Shawano, Wis.

Ax-men: Eugene Zeuske, Shawano, Wis.
Francis Quinn, Shawano, Wis.

Purpose: To establish N 1/16 corner on east section line of
section 36, T 34 N R 12 E.

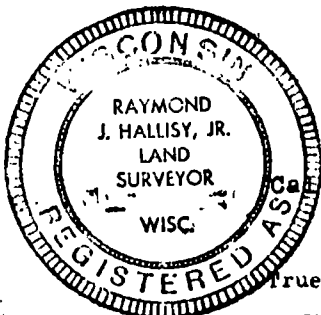
Random line was begun by transit on bearing of S 3° E from point of beginning which was a brass cap pipe marked meander corner located where above section line enters south edge of Pickerel Lake. At 36.53 chains south on random a right angle was offset to an iron pipe accepted as the east 1/4 corner of section 36. Iron pipe is witnessed by a large white pine rampike bearing old iron scribe marks which is accepted as the original 36-inch white pine bearing tree as mentioned in the original survey notes. Length of offset from random line to 1/4 corner was 65 links.

Vis single proportional measurement the location of the N 1/16 corner was calculated as follows:

- (1) Original distance from 1/4 corner to meander corner was 36.70 ch.
- (2) Re-survey location of 1/16 corner from random =
$$\frac{36.70 - 20.00}{36.70} \times 36.53 = 16.62 \text{ ch. point on random.}$$
- (3) Offset from random to 1/16 =
$$\frac{65 \text{ links}}{36.53 \text{ ch.}} \times 16.62 = 29.58 \text{ links}$$
- (4) At 16.62 ch. point of random, a right angle to random was turned and at offset distance from random of 29.58 links, a 1½" pipe 30 inches long was set for 1/16 corner.

Bearing trees blazed but not scribed:

8" Hard maple S 69° E 21 links
10" Hard maple S 58° W 9 links
8" Hard maple N 3° E 22 links



Calculations: Length of true line = 36.54 ch.
Bearing of true line = S 01° 59' E

True line corrected and blazed from N 1/16 corner to meander corner.

Date: February 12, 1966

Instrument: Robert J. Becker

Ax-men: Eugene Zeuske, Francis Quinn

Purpose: To establish true line between N 1/16 corner on east section line of section 36, T 34 N R 12 E and center north 1/16 corner of same section.

Random line was begun by transit on bearing of N 89° W from N 1/16 corner as described above. At 40.92 ch. on random line a right angle offset was made to a wooden post scribed "1/8 S" which was accepted as the center north 1/16 corner. This wooden post is located at a fence corner and has a one-inch iron pipe driven next to it. Length of offset from random to post was 2.14 ch.

True line was corrected and blazed.

Calculations: Length of true line from N 1/16 corner to CN 1/16 corner = 40.99 ch.

Bearing of same true line = S 87° 52' W.

