

U.S. PUBLIC LAND SURVEY MONUMENT RECORD

(Prepared and as required by S. A-E 7.08 WI Administrative Code)

The WEST 1/4 corner of Section 34, T. 34 N., R. 12 E., Langlade County, WI

Corner was: (check all that apply)

- Restored through acceptance of an obliterated evidence location.
- Restored through acceptance of a found perpetuated location.
- Determined to be lost and re-established through proportionate methods.
(Show bearings and distances to PLSS corners used for proportioning.)
- Restored/recovered/reestablished in a location that differs from a previously established position. (Show difference in plan view below.)

Check here if additional information is shown on the reverse side of this form.

Describe record evidence, recovered physical evidence, occupational evidence, testimonial evidence and all other evidence considered in the recovery/restoration of the corner.

CORNER HISTORY

Original corner, wood post, set by Deputy Surveyor J. Norolin in May of 1865

Ties: Tamarack 8" N76°W, 5 links

Tamarack 6" S15°W, 6 links

Malcolm Hutchinson in 1911 surveyed from East 1/4 to West 1/4 of Sec. 34 and found two original BTs and wood stake he said was set by Brooks

Charles W. Borth in 1933 found original BTs gone and set new wood post at corner and one new bearing tree: 8" Cedar N53°30'W, 40.5 feet

Raymond J. Hallisy RLS No. 685 in 1985 found 6" scribed wood post set by C. Borth in 1933. Set 3" Aluminum pipe with Lanlade County Cap with ties to Bearing Trees:

16" Cedar N51°W, 39.8', 9" Black Spruce N40°W, 48.5', 10" Tamarack, N38°W 45.7', 4" Black

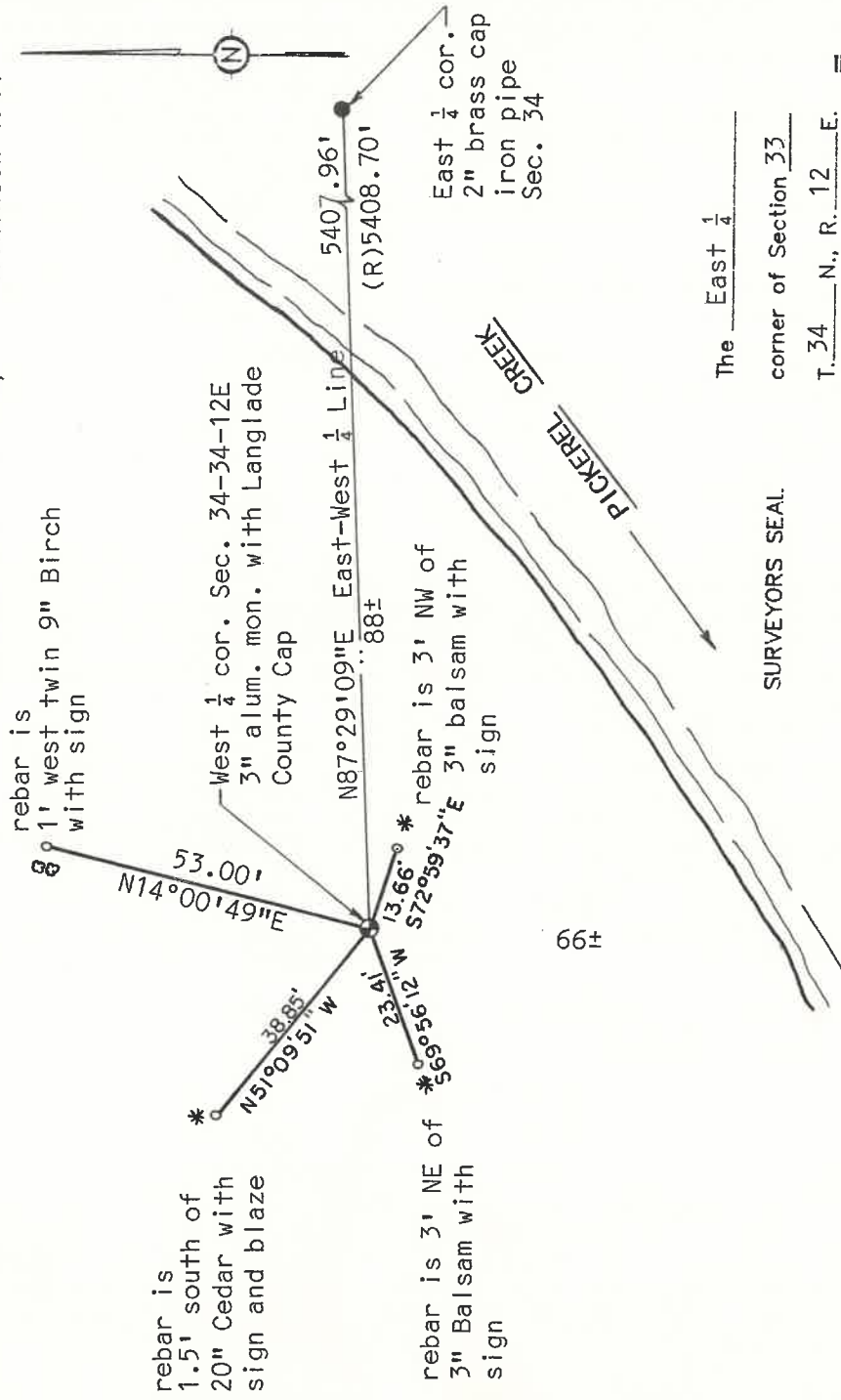
Physical description of the monument ~~set~~ Spruce N28°W, 48.7'. In 1999 found 3" Al. Mon. and set new ties.

3" aluminum monument with Langlade County cap 1.5 feet above ground. There is a 4" x 4" wood post, 2 feet above ground, on the north side of monument and set a white vinyl post 0.5 feet south of monument. Corner is located west of creek in Tag Alders.

Describe the accessories used to perpetuate the location of the corner. Include a plan view drawing and indicate accessories found/set. Describe measuring point on bearing trees. Show any topographic features that would aid in future recovery of the corner.

Signs on reference trees are yellow 3/4" x 30" rebar

(R)Record distance by M. Hutchinson 1911



rebar is 1.5' south of 20" Cedar with sign and blaze

rebar is 3' NE of 3" Balsam with sign

* rebar is 3' NW of 3" balsam with sign

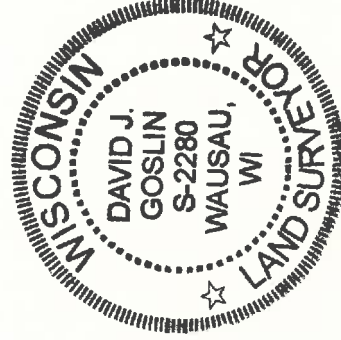
East 1/4 cor. 2" brass cap iron pipe Sec. 34

The East 1/4

SURVEYORS SEAL

corner of Section 33

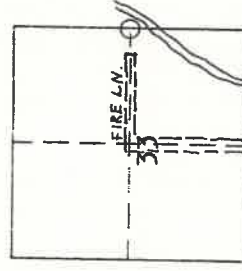
T. 34 N., R. 12 E. Langlade County, WI



I, David J. Goslin RLS, certify that the corner location shown on this record was determined by me or under my direction and control and that this U.S. Public Land Survey Monument Record is correct and complete to the best of my knowledge and belief.

David J. Goslin 12-30-99
Signature Date

INDEX No. X-13



O = Location of corner

CERTIFIED LAND CORNER RESTORATION

Index No. X-13

State of Wisconsin }
County of LANGLADE } ss.

History of original corner establishment:

SET BY C. BORTH IN THE 1930'S

I RAYMOND S. HALLISY, do hereby certify that on the 11TH day of MAY, 1985, I found evidence of the 4 corner of 33 & 34 Township 34, North, Range 12E, Fourth Principal Meridian, as described hereon; and that from this evidence I established a new monument and accessories as described hereon to perpetuate the original location of this corner.

Description of corner evidence found:

6" SCRIBED WOOD POST DOWN, POINT INTACT

Resident witnesses:

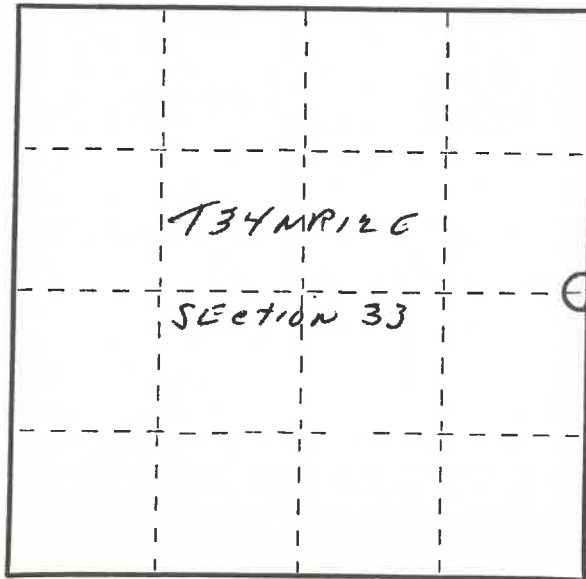
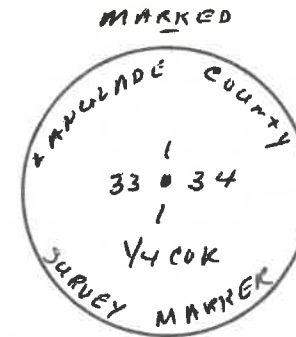
.....
.....
.....

Description of monument and accessories I established to perpetuate the original location of this corner.

SET 3" ALUMINUM PIPE WITH CAP
WITH POST ALONGSIDE

NEW BT'S

16" CEDAR N51W 39.8'
9" BLACK SPRUCE N40W 48.5'
10" TAMARACK N38W 45.7'
4" BLACK SPRUCE N28W 48.7'



○ = Corner monument restored.

Dated at ANTICHO, Wis., this 11TH day of MAY, 1985

Signature Raymond S. Hallisy Title LAND SURVEYOR Registration No. S-685
(County Surveyor, Registered Land Surveyor, or other duly authorized official)

Office of Register of Deeds, County of....., I hereby certify that the within instrument was filed in this office for record on the.....day of....., 19..... at.....o'clock..... M.

(Register of Deeds)

By.....Deputy

PLSS field condition report

Date: 4/22/2020 Time of day: 6:45 AM

By: Cody Branner

Section 33 Town 34 Range 12
(circle corner location on diagram)

Does the monument appear to be tilted, smashed, uprooted, covered or otherwise damaged by the windstorm?
YES NO

Are any bearing trees broken, uprooted, missing or otherwise damaged by the windstorm? YES NO

TAKE PICTURES

For the first four pictures, do them in this order:

Looking north, looking east, looking south, looking west and, by standing about 6 feet behind the monument, include the monument in each picture.

Then take a picture of the top of the monument, close enough to be able to read what is stamped on the cap. Make sure all pictures are in focus.

also has Rebar at bearing trees



4341233 2000

X13

X 13 34-12