

LANGLADE COUNTY U.S. PUBLIC LAND CORNER RESTORATION

The South Quarter corner of Section 33, T. 34 N., R. 12 E., Langlade County, WI.

Corner was: (check all that apply)

3412330020

- Restored through acceptance of an obliterated evidence location.
- Restored through acceptance of a found perpetuated location.
- Determined to be lost and re-established through proportionate methods.
- Show bearings and distances to PLSS corners used for proportioning, and show original distances).
- Restored/recovered/re-established in a location that differs from a previously established position.
- (Show difference in plan view below).
- Check here if addition information is shown on the reverse side of this form.

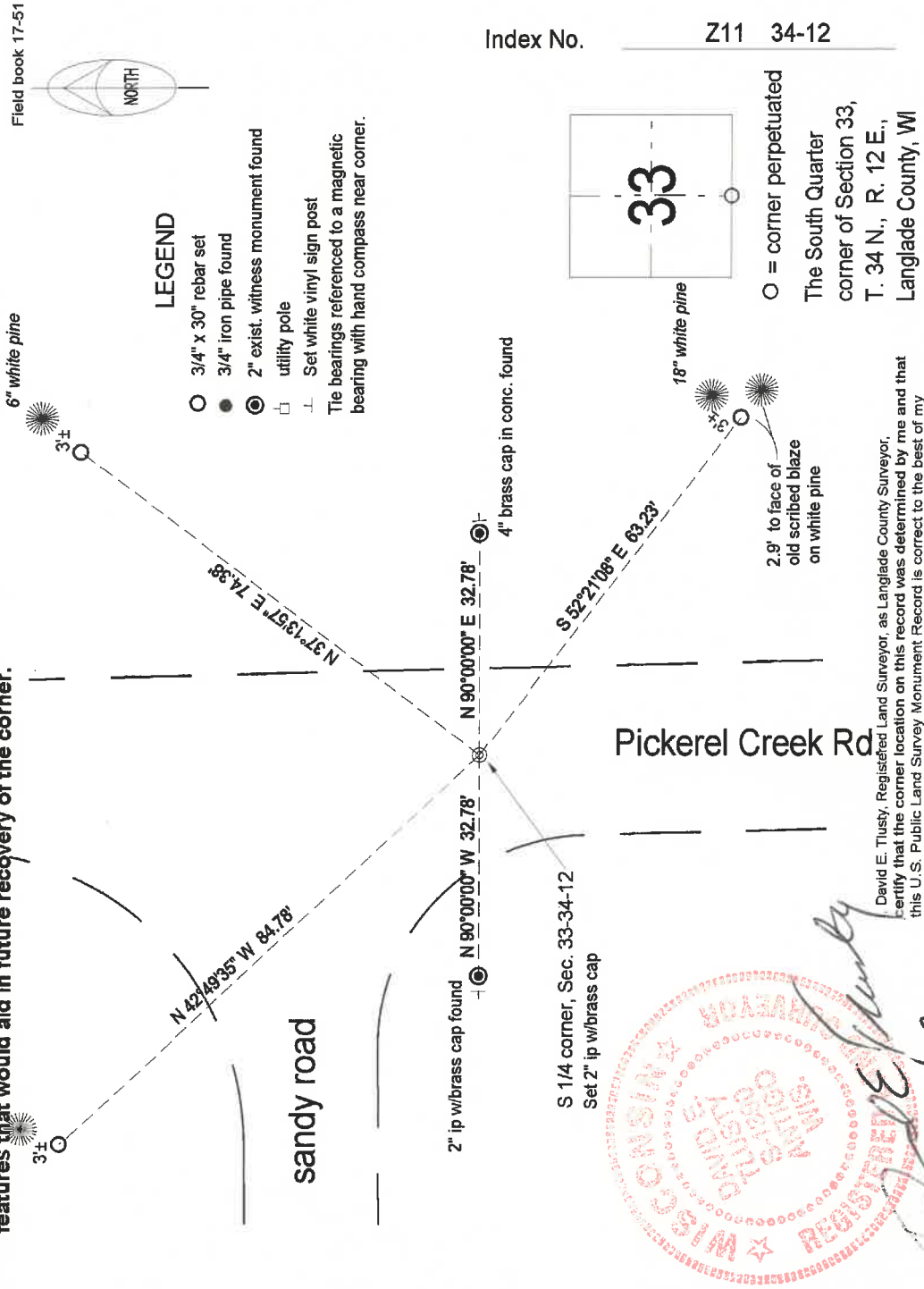
Describe record evidence, recovered physical evidence, occupational evidence, testimonial evidence and all other evidence considered in the recovery/restoration of the corner.

The original corner was established in 1857 by Alfred Millard. Original bearing trees: y. pine, 10, S75°W, 180 links, and a y. pine, 10", S66°E, 37 links. Brooks (date unknown) in FB 44 found orig. y. pine BT, SW, good, other gone. Set stone with "+" on top for corner and marked two new w. pine BT's. Robert Poss, 1968, found stone with "+" on top and 2 WC's by other surveyors. He set a brass cap 2 rods east and a wood post 2 rods west. Ray Hallisy, 1979, found stone. He also found Poss's 4" BC bulldozed out and re-set it. He set a 2" ip w/bc 2 rods west and marked two W. pine BT's. 08/17/99 D. Tlusty, D. Williams found 2" IP w/bc to the West, 4" brass capped mon. to the East and Hallisys SE BT. Stone is gone. Re-set the corner from ties found and re-measured as shown below.

Physical description of the monument set:

Set a 2" x 30" galvanized, flared bottom iron pipe with brass cap, top of which is 1.0' below road surface.

Describe the accessories used to perpetuate the corner. Include a plan view drawing and accessories found/set. Describe measuring point on bearing trees. Show any topographic features that would aid in future recovery of the corner.



Index No.

Z11 34-12

David E. Tlusty, Registered Land Surveyor, as Langlade County Surveyor,
certify that the corner location on this record was determined by me and that
this U.S. Public Land Survey Monument Record is correct to the best of my
knowledge and belief.



David E. Tlusty
3/28/02

PLSS field condition report

Date: 4/21/2020 Time of day: 7:30 AM

By: Calv Brewer

Section 33 Town 34 Range 12E
(circle corner location on diagram)



Does the monument appear to be tilted, smashed, uprooted, covered or otherwise damaged by the windstorm?
YES NO

Actual corner is about ground surface and is assumed to be intact

Are any bearing trees broken, uprooted, missing or otherwise damaged by the windstorm? YES NO

No bearing trees are standing. Did not locate 3/4 rebar due to NIP slash
2" BC intact/undisturbed 4" BC buried white marker post-found

4341233 0020

TAKE PICTURES

For the first four pictures, do them in this order:

Looking north, looking east, looking south, looking west and, by standing about 6 feet behind the monument, include the monument in each picture.

Then take a picture of the top of the monument, close enough to be able to read what is stamped on the cap. Make sure all pictures are in focus.

Pictures as follows

- 1 looking North
- 2 looking East
- 3 looking South
- 4 looking west
- 5 2" BC
- 6 4" BC location

211

211-34-12