

CERTIFIED LAND CORNER RESTORATION

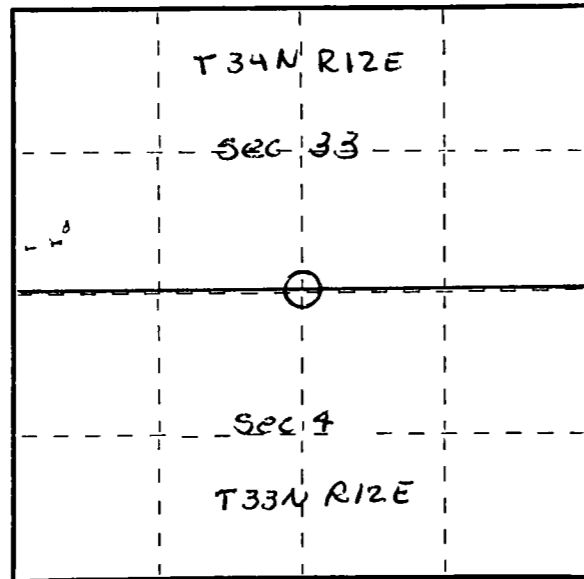
Index No. A-11

State of Wisconsin }
 County of Lancaster } ss.

I Raymond J. Hallisy, do hereby certify that on the 6th day of May, 1979, I found evidence of the 1/4 corner of 4 & 33 Township 33 & 34, North, Range 11E, Fourth Principal Meridian, as described hereon; and that from this evidence I established a new monument and accessories as described hereon to perpetuate the original location of this corner.

Resident witnesses:

.....



○ = Corner monument restored.

History of original corner establishment:

Corner set in March 1936 by Chas. Porth
 Witnessed by R. Poss in June 1968

SEE NOW IN 34-12

33-12

Description of corner evidence found:

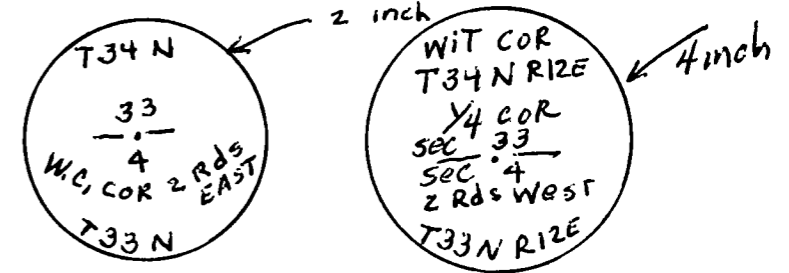
Found Poss's 1/2" brass cap bulldozed out, also Porth's Witness post 2 Pds West of corner down. True corner is a stone in town road.

Description of monument and accessories I established to perpetuate the original location of this corner.

Reset Poss's Witness Corner 2 rods East of stone and a 2" pipe with brass cap 2 rods West of Stone.

New ET's to true corner

12" White Pine S52E 56' 1"
 10" White Pine N40W 79' 9"



Dated at Antigo, Wis., this 6th day of May, 1979.

Signature Raymond J. Hallisy Title Reg. Surveyor Registration No. S-685
 (County Surveyor, Registered Land Surveyor, or other duly authorized official)

Office of Register of Deeds, County of Lancaster, I hereby certify that the within instrument was filed in this office for record on the 6th day of May, 1979 at 10 o'clock AM.

.....
 (Register of Deeds)

By..... Deputy

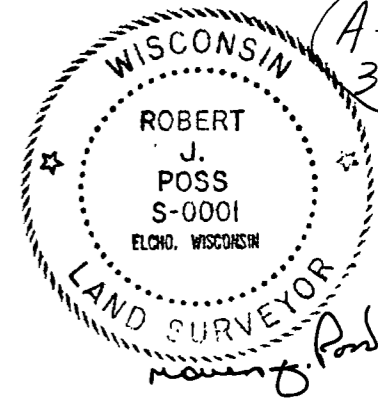
CERTIFIED LAND CORNER RESTORATION

24-12
Index No. ~~Z-11~~ A-11
33-12

State of Wisconsin }
County of LANGLADE } ss.

History of original corner establishment:

I, ROBERT J. POSS, do hereby certify that on the 31ST day of MAY, 1968, I found evidence of the 1/4 corner of SEC. 33 & SEC. 4 Township 34 & 33, North, Range 12 EAST, Fourth, Principal Meridian, as described hereon; and that from this evidence I established a new monument and accessories as described hereon to perpetuate the original location of this corner.



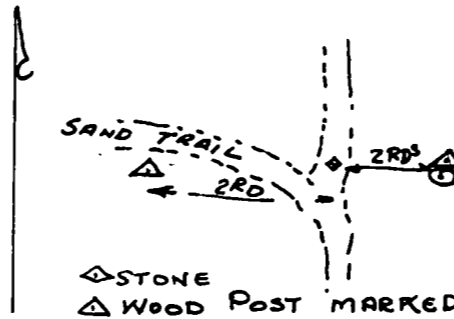
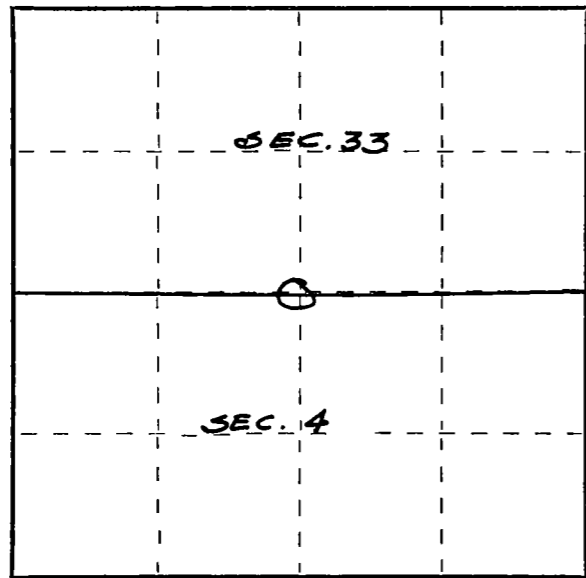
Description of corner evidence found:

FOUND STONE WITH PROMINENT X ON TOP.
2 WITNESS CORNS. BY PREVIOUS SURVEYORS.

Resident witnesses:

.....
.....
.....

Description of monument and accessories I established to perpetuate the original location of this corner.



NO LARGE OR GOOD TREES NEAR

⊙ BRASS CAP MKD.
WIT. COR.
T 3/4 N R 12 E
1/4 COR
SEC. 33
SEC. 4
2 RDS WEST
T 3/4 N R 12 E

Dated at ELCHO, Wis., this 1ST day of JUNE, 1968.

Signature Robert J. Poss Title REG. LAND SURVEYOR Registration No. S-1
(County Surveyor, Registered Land Surveyor, or other duly authorized official)

Office of Register of Deeds, County of....., I hereby certify that the within instrument was filed in this office for record on the..... day of....., 19..... at..... o'clock..... M.

.....
(Register of Deeds)

By..... Deputy

○ = Corner monument restored.