

CERTIFIED LAND CORNER RESTORATION

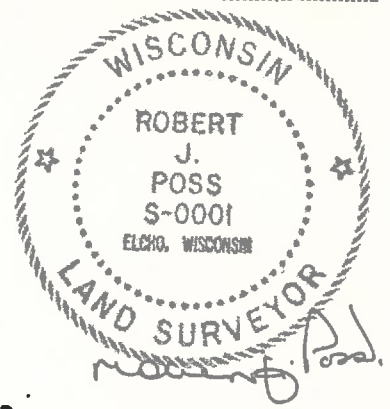
34-12

Index No. T-5

State of Wisconsin }  
County of LANGLADE } ss.

History of original corner establishment:

I, ROBERT J. POSS, do hereby certify that on the 4TH day of JUNE, 1968, I found evidence of the 1/4 corner of BETWEEN SECS. 29 & 30 Township 34, North, Range 12 EAST, Fourth, Principal Meridian, as described hereon; and that from this evidence I established a new monument and accessories as described hereon to perpetuate the original location of this corner.



Description of corner evidence found:

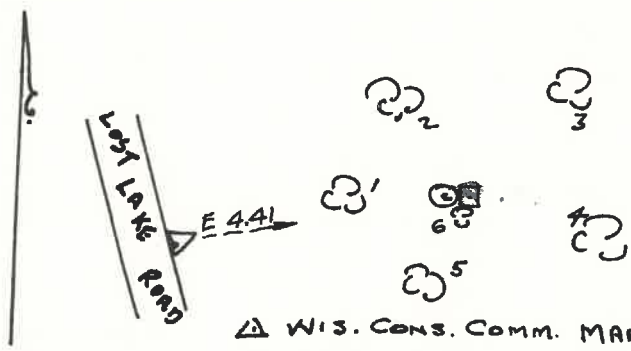
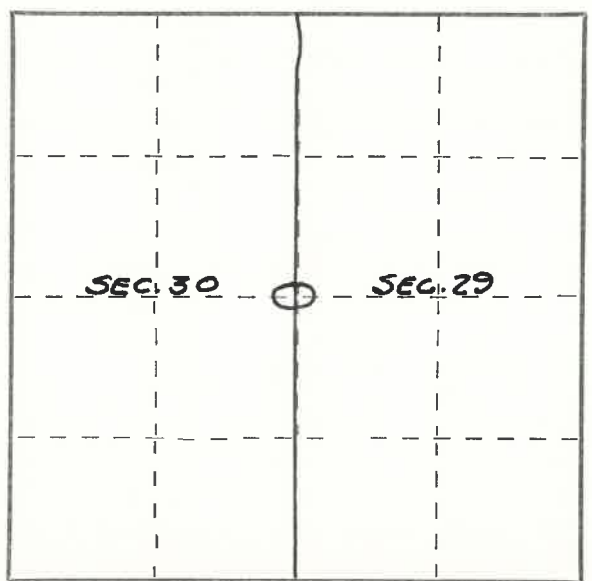
FOUND LARGE WOOD POST SQUARED & MARKED 1/4 S 30-29. POST IN MOUND OF FIELD STONE

Resident witnesses:

.....  
.....  
.....

Description of monument and accessories I established to perpetuate the original location of this corner.

① BRASS CAP SET IN CONCRETE. MKD. 1/4 COR SEC. 30 SEC. 29 T34N R12E



- 1. SPRUCE 6 S 77 W 63.4
- 2. ASPEN 8 N 5 W 21.2
- 3. SPRUCE 4 N 78 3/4 E 12.6
- 4. W. PINE 6 S 20 1/4 E 25.0
- 5. ASPEN 10 S 54 1/2 W 53.0
- 6. BALSAM 4" ALONGSIDE

Dated at ELCHO, Wis., this 4 day of JUNE, 1968.

Signature Robert J. Poss Title REG. LAND SURVEYOR Registration No. S-1  
(County Surveyor, Registered Land Surveyor, or other duly authorized official)

Office of Register of Deeds, County of \_\_\_\_\_, I hereby certify that the within instrument was filed in this office for record on the \_\_\_\_\_ day of \_\_\_\_\_, 19\_\_\_\_ at \_\_\_\_\_ o'clock \_\_\_\_\_ M.

(Register of Deeds)

By \_\_\_\_\_ Deputy

○ = Corner monument restored.

FORM 985 H. C. MILLER CO., MILWAUKEE

PLSS field condition report

Date: 4/20/2000 Time of day: 8:55 Am

By: Scott Blanton

Section 30 Town 34 Range 12  
(circle corner location on diagram)

Does the monument appear to be tilted, smashed, uprooted, covered or otherwise damaged by the windstorm?  
YES NO

Are any bearing trees broken, uprooted, missing or otherwise damaged by the windstorm? YES NO

TAKE PICTURES

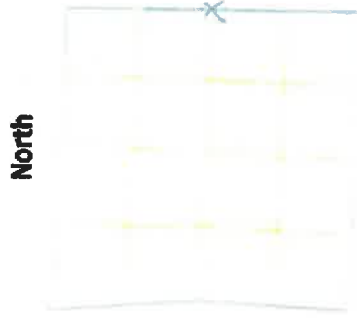
For the first four pictures, do them in this order:

Looking north, looking east, looking south, looking west and, by standing about 5 feet behind the monument, include the monument in each picture.

Then take a picture of the top of the monument, close enough to be able to read what is stamped on the cap. Make sure all pictures are in focus.

*Bearing Trees Not located*

*4 photos Taken at GPS location of monument*



4341230 2000

T5 34-12

T5