

CERTIFIED LAND CORNER RESTORATION

Index No. V-2

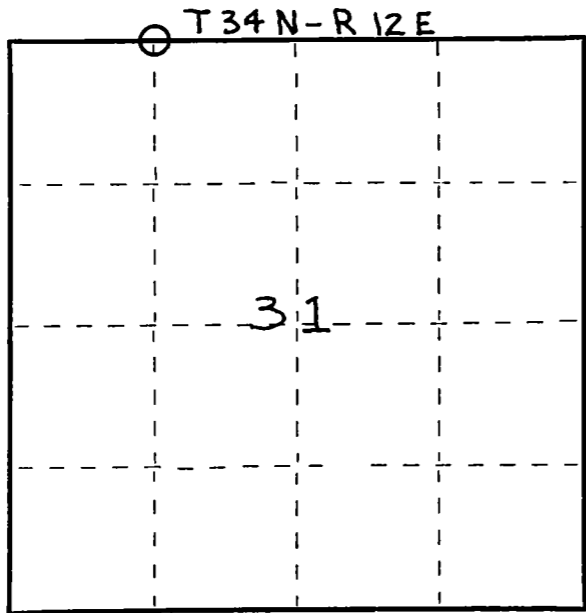
State of Wisconsin }
County of LANGLADE } ss.

I WILLIAM F. KELLEY, do hereby certify that on the 16th day of FEBRUARY, 1979, I found evidence of the WEST 1/8 corner of SECT. 31 Township 34, North, Range 12 EAST, Fourth Principal Meridian, as described hereon; and that from this evidence I established a new monument and accessories as described hereon to perpetuate the original location of this corner.

Resident witnesses:

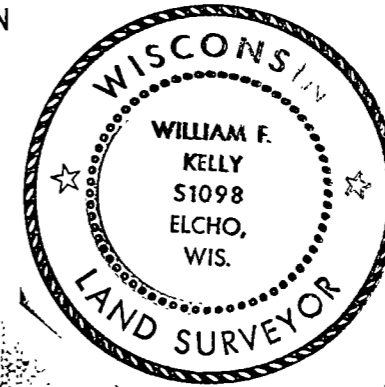
.....
.....
.....

FORM 985 H. C. MILLER CO., MILWAUKEE



○ = Corner monument restored.

History of original corner establishment:



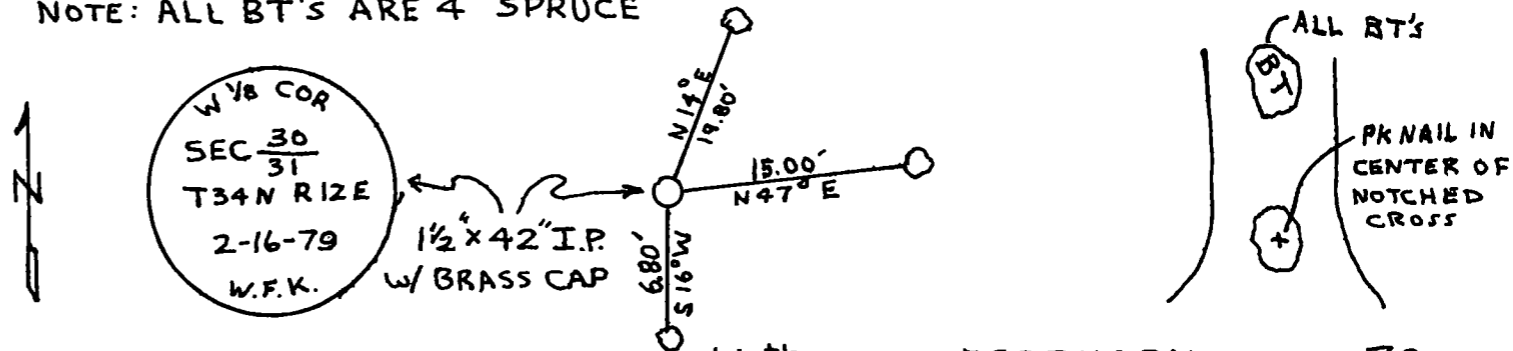
William F. Kelly

Description of corner evidence found:

CORNER SET BY PROPORTIONAL MEASUREMENT BETWEEN KNOWN N 1/4 CORNER AND KNOWN NW SECT. CORNER

Description of monument and accessories I established to perpetuate the original location of this corner.

NOTE: ALL BT'S ARE 4" SPRUCE



Dated at ELCHO, Wis., this 16th day of FEBRUARY, 1979.

Signature William F. Kelly Title COUNTY SURVEYOR Registration No. S-1098
(County Surveyor, Registered Land Surveyor, or other duly authorized official)

Office of Register of Deeds, County of....., I hereby certify that the within instrument was filed in this office for record on the..... day of....., 19..... at..... o'clock..... M.

.....
(Register of Deeds)

By..... Deputy