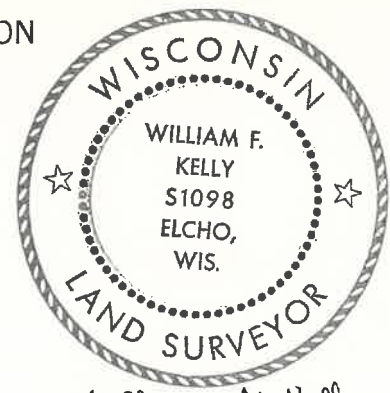


CERTIFIED LAND CORNER RESTORATION

Index No. V-3

State of Wisconsin }
County of LANGLADE } ss.

History of original corner establishment:



William F. Kelly

I WILLIAM F. KELLY, do hereby certify that on the 20TH day of FEBRUARY, 19 79, I found evidence of the N 1/4 corner of SECTION 31 Township 34, North, Range 12E, Fourth Principal Meridian, as described hereon; and that from this evidence I established a new monument and accessories as described hereon to perpetuate the original location of this corner.

Description of corner evidence found:

CHARLES W. BORTH, 1936, FOUND OLD CEDER POST W.C. & REMONUMENTED WITH NEW CEDAR POST W.C., MAKING THE N 1/4 CORNER 116.10' EAST OF W.C. AT THE TIME, THE N 1/4 CORNER LAY IN THE WOLF RIVER.

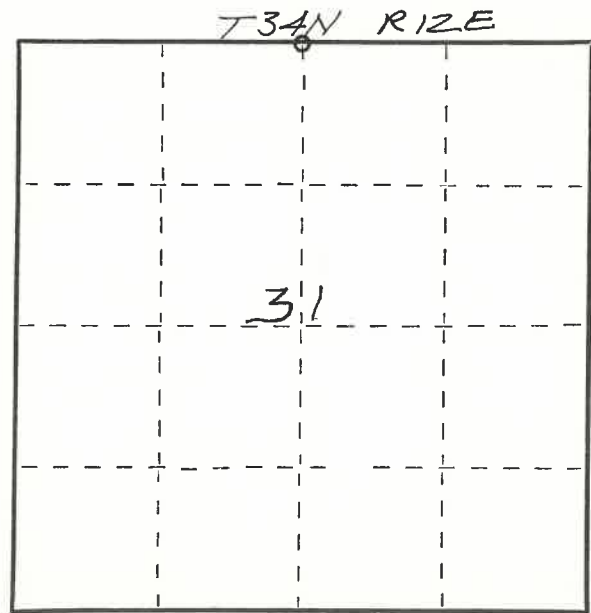
Resident witnesses:

.....
.....
.....

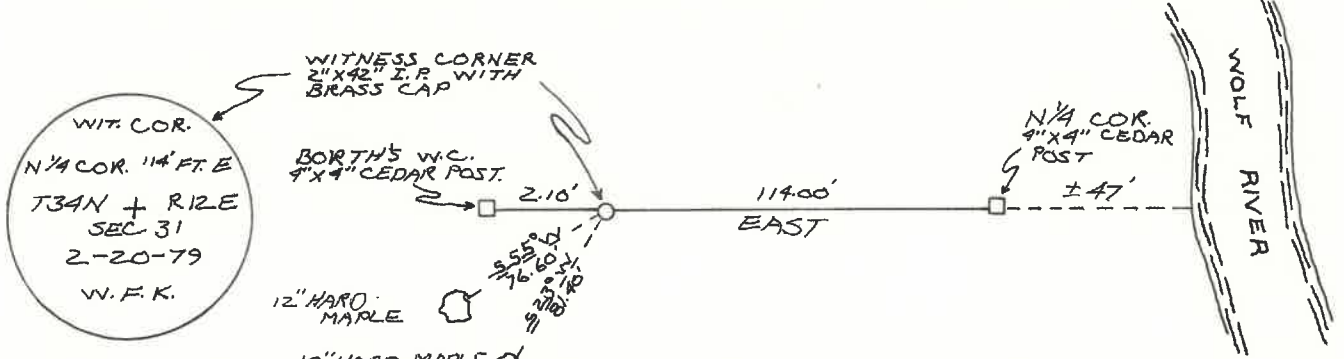
FOUND BORTH'S W.C. & SET A 2" X 42" I.P. WITH BRASS CAP, 2.10' EAST OF CEDAR POST W.C. & SET A CEDAR POST 114.00' EAST OF BRASS CAP TO MONUMENT THE POSITION OF THE N 1/4 COR. THE NORTH 1/4 CORNER NOW LIES IN THE WET LANDS.

Description of monument and accessories I established to perpetuate the original location of this corner.

FORM 985 H. C. MILLER CO., MILWAUKEE



○ = Corner monument restored.



Dated at ELCHO, Wis., this 20TH day of FEBRUARY, 19 79.

Signature William F. Kelly Title COUNTY SURVEYOR Registration No. S-1098
(County Surveyor, Registered Land Surveyor, or other duly authorized official)

Office of Register of Deeds, County of, I hereby certify that the within instrument was filed in this office for record on the day of, 19 at o'clock M.

(Register of Deeds)

By Deputy

PLSS field condition report

Date: 4/21/2020 Time of day: 9:25 Am

By: Cody Glauner

Section 31 Town 34 Range 12
(circle corner location on diagram)



Does the monument appear to be tilted, smashed, uprooted, covered or otherwise damaged by the windstorm?
YES NO

Are any bearing trees broken, uprooted, missing or otherwise damaged by the windstorm? YES NO

BT's gone Not from storm

4341230 0020

TAKE PICTURES

For the first four pictures, do them in this order:

Looking north, looking east, looking south, looking west and, by standing about 6 feet behind the monument, include the monument in each picture.

Then take a picture of the top of the monument, close enough to be able to read what is stamped on the cap. Make sure all pictures are in focus.

Additional picture of Cedar Post @ Corner location

V3 34-12

V-3