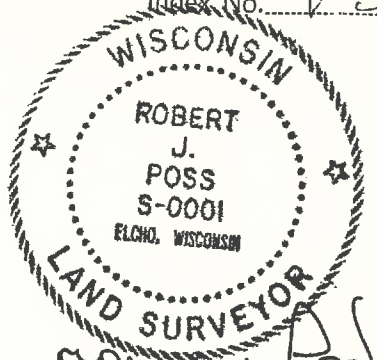


CERTIFIED LAND CORNER RESTORATION

34-12

Index No. V-5



State of Wisconsin }
County of LANGLADE } ss.

I, ROBERT J. POSS, do hereby certify that on the 6TH day of JUNE, 1968, I found evidence of the corner of SECS. 29, 30, 31, 32 Township 34, North, Range 12 EAST, Fourth, Principal Meridian, as described hereon; and that from this evidence I established a new monument and accessories as described hereon to perpetuate the original location of this corner.

History of original corner establishment:

Description of corner evidence found:

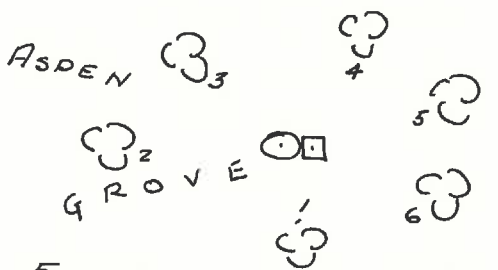
FOUND SQ'D STAKE IN MOUND OF STONE. 74 LKS. SOUTH OF WCC. MARKER - WITH ALUM #

Resident witnesses:

.....
.....
.....

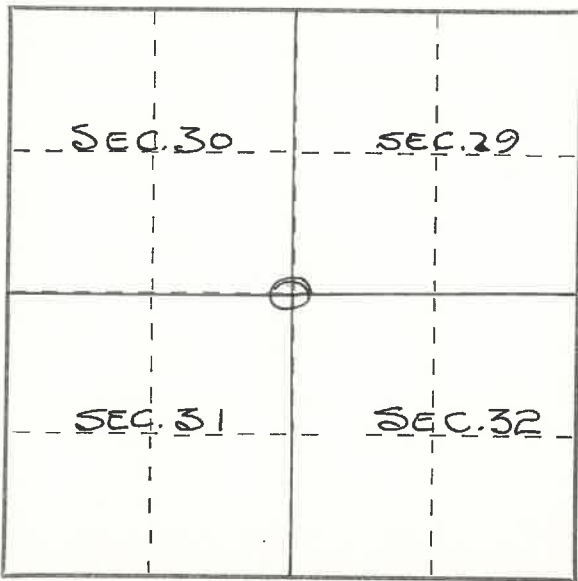
Description of monument and accessories I established to perpetuate the original location of this corner.

LOST LAKE ROAD.



- = WCC MKR. 74LKS S to Post.
- = SQD STK IN ROCK MOUND.
- = BRASS CAP IN CONCRETE MKD ^{SEC COR} 20 29 31 32

- 1 BALSAM 8 S 11 1/4 W 42
- 2 ASPEN 6 N 54 W 19.6
- 3 ASPEN W/OLD BLAZE 10 N 40 1/2 W 9.3
- 4 ASPEN 8 N 32 1/2 E 6.9 (OLD BLAZE - DEAD)
- 5 BALSAM 4 S 68 1/2 E 21.2
- 6 ASPEN 10 S 56 3/4 E 15.0



Dated at ELCHO, Wis., this 6TH day of JUNE, 1968

Signature Robert J. Poss Title REG. LAND SURVEYOR Registration No. S-1
(County Surveyor, Registered Land Surveyor, or other duly authorized official)

Office of Register of Deeds, County of _____, I hereby certify that the within instrument was filed in this office for record on the _____ day of _____, 19____ at _____ o'clock _____ M.

(Register of Deeds)

By _____ Deputy

○ = Corner monument restored.

FORM 985 H. C. MILLER CO., MILWAUKEE

PLSS field condition report

Date: 4/9/2020 Time of day: 11:46 AM

By: Cody Brauner

Section 29 Town 34 Range 12E
(circle corner location on diagram)



Does the monument appear to be tilted, smashed, uprooted, covered or otherwise damaged by the windstorm?

YES NO

Dead tree came down on monument broke concrete. Light damage to concrete

Are any bearing trees broken, uprooted, missing or otherwise damaged by the windstorm? YES NO

No bearing trees located Timber moderately damaged

4341230 0000

TAKE PICTURES

For the first four pictures, do them in this order:

Looking north, looking east, looking south, looking west and, by standing about 6 feet behind the monument, include the monument in each picture.

Then take a picture of the top of the monument, close enough to be able to read what is stamped on the cap. Make sure all pictures are in focus.

V5

V5 34 12

#3