

# U.S. PUBLIC LAND SURVEY MONUMENT RECORD

(Prepared and as required by S. A-E 7.08 WI Administrative Code)

The W 1/4 corner of Section 27, T. 34 N., R. 12 E., Langlade County, WI

Corner was: (check all that apply)

- Restored through acceptance of an obliterated evidence location.
- Restored through acceptance of a found perpetuated location.
- Determined to be lost and re-established through proportionate methods. (Show bearings and distances to PLSS corners used for proportioning.)
- Restored/recovered/reestablished in a location that differs from a previously established position. (Show difference in plan view below.)

43412282000

Check here if additional information is shown on the reverse side of this form.

Describe record evidence, recovered physical evidence, occupational evidence, testimonial evidence and all other evidence considered in the recovery/restoration of the corner.

ORIGINAL CORNER ESTABLISHED BY JAMES L. NOWLIN IN 1865 HE SET POST BT'S: Y.PINE 10" N41°W 20LKS. Y.PINE 15" S3°E 22LKS. ROBERT J.POSS IN JUNE 1968; FOUND STAKE NEAR ROAD, BUT FOUND HOLE WHERE STAKE HAD BEEN AND PICKET.

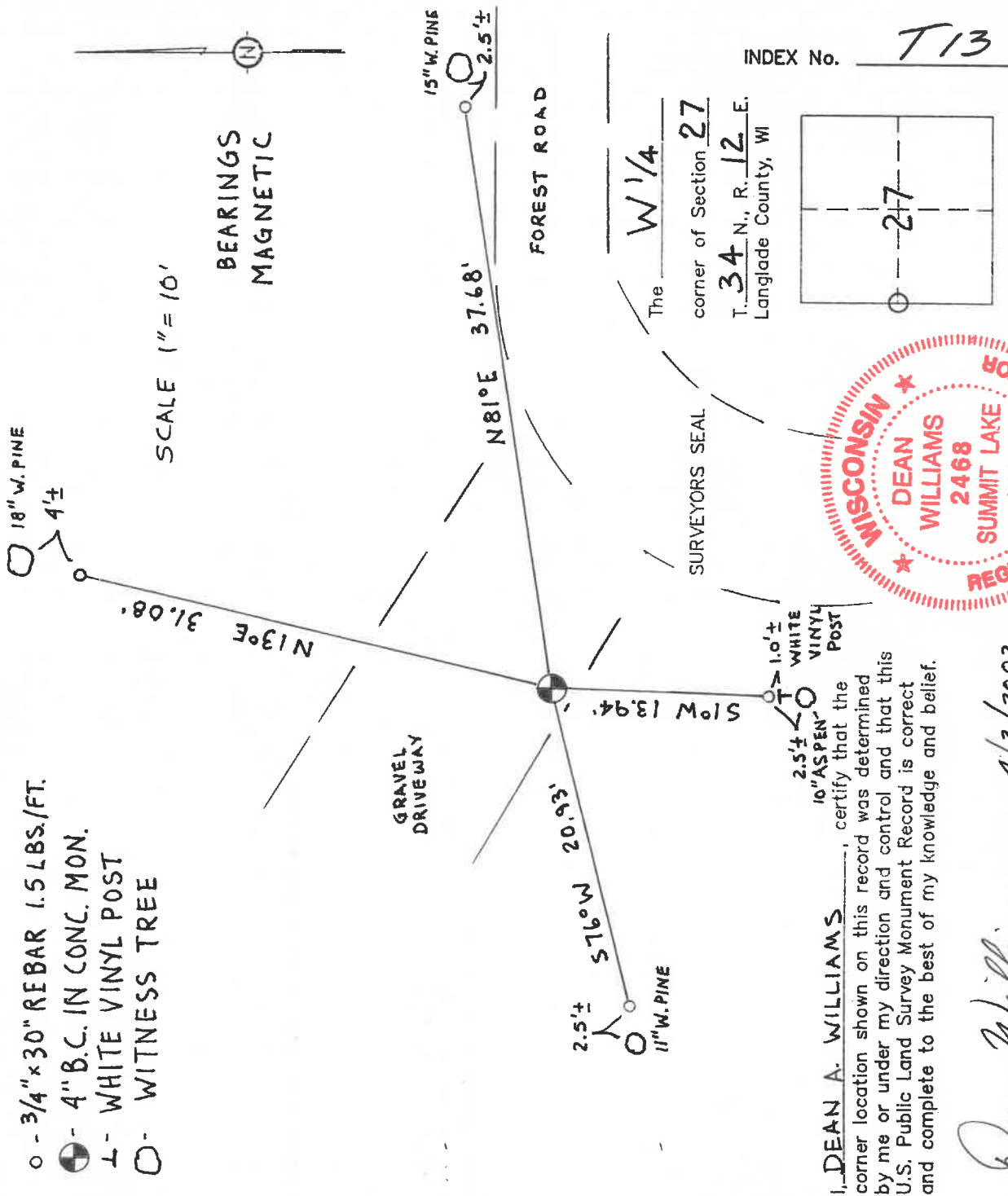
SET 4" BRASS CAP MONUMENT IN CONCRETE MARKED 28127 ALSO SET NBT'S: W.PINE 8" S50½°W 3.10', W.PINE 8" N25¼°W 20.00' AND STONE W/X = 13.40', S63½°E.

DEANA WILLIAMS 6/26/02 - FOUND 4" B.C. IN CONC. 1.75' BELOW SURFACE & RETIED.

Physical description of the monument set:

- FOUND, NOT SET
- SET 4 NEW WITNESS REBARS
- WITNESS TREES NOT MARKED

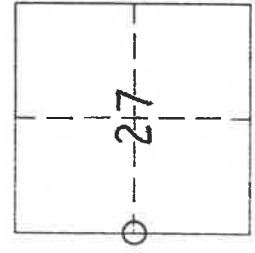
Describe the accessories used to perpetuate the location of the corner. Include a plan view drawing and indicate accessories found/set. Describe measuring point on bearing trees. Show any topographic features that would aid in future recovery of the corner.



I, DEAN A. WILLIAMS, certify that the corner location shown on this record was determined by me or under my direction and control and that this U.S. Public Land Survey Monument Record is correct and complete to the best of my knowledge and belief.

*Dean Williams*  
Signature 4/3/2003  
Date

INDEX No. T13



O = Location of corner

WISCONSIN ADMINISTRATIVE CODE

Note: A copy of the board-approved form is available from the Department of Registration and Licensing, Bureau of Business and Design Professions, 1400 East Washington Avenue, P.O. Box 8935, Madison, Wisconsin, 53708.

(3) MONUMENT RECORD REQUIREMENTS. A U.S. public land survey monument record shall show the location of the corner and shall include all of the following elements:

- (a) The identity of the corner, as referenced to the U.S. public land survey system;
  - (b) A description of any record evidence, monument evidence, occupational evidence, testimonial evidence or any other material evidence considered by the surveyor, and whether the monument was found or placed;
  - (c) References to at least 4 witness monuments. Witness monuments shall be concrete, natural stone, iron-bearing trees or other equally durable material, except wood other than bearing trees;
  - (d) A plan view drawing depicting the relevant monuments and reference ties which is sufficient in detail to enable accurate relocation of the corner monument if the corner monument is disturbed;
  - (e) A description of any material discrepancy between the location of the corner as restored or reestablished and the location of that corner as previously restored or reestablished;
  - (f) Whether the corner was restored through acceptance of an obliterated evidence location or a found perpetual location;
  - (g) Whether the corner was reestablished through lost-corner-proportionate methods;
  - (h) The directions and distances to other public land survey corners which were used as evidence or used for proportioning in determining the corner location; and,
  - (i) The stamp and signature or seal and signature of the land surveyor under whose direction and control the corner location was determined and a statement certifying that the U.S. public land survey monument record is correct and complete to the best of his or her knowledge and belief.
- History: C. Register, February, 1987, No. 374, eff. 3-1-87, an. (1) and (3) to Register, May, 1989, No. 401, eff. 6-1-89.

**A-E 7.07 Monuments.** The type and position of monuments to be set on any survey shall be determined by the nature of the survey, the permanency required, the nature of the terrain, the cadastral features involved, and the availability of material.

History: C. Register, February, 1987, No. 374, eff. 3-1-87

**A-E 7.08 U.S. public land survey monument record.**

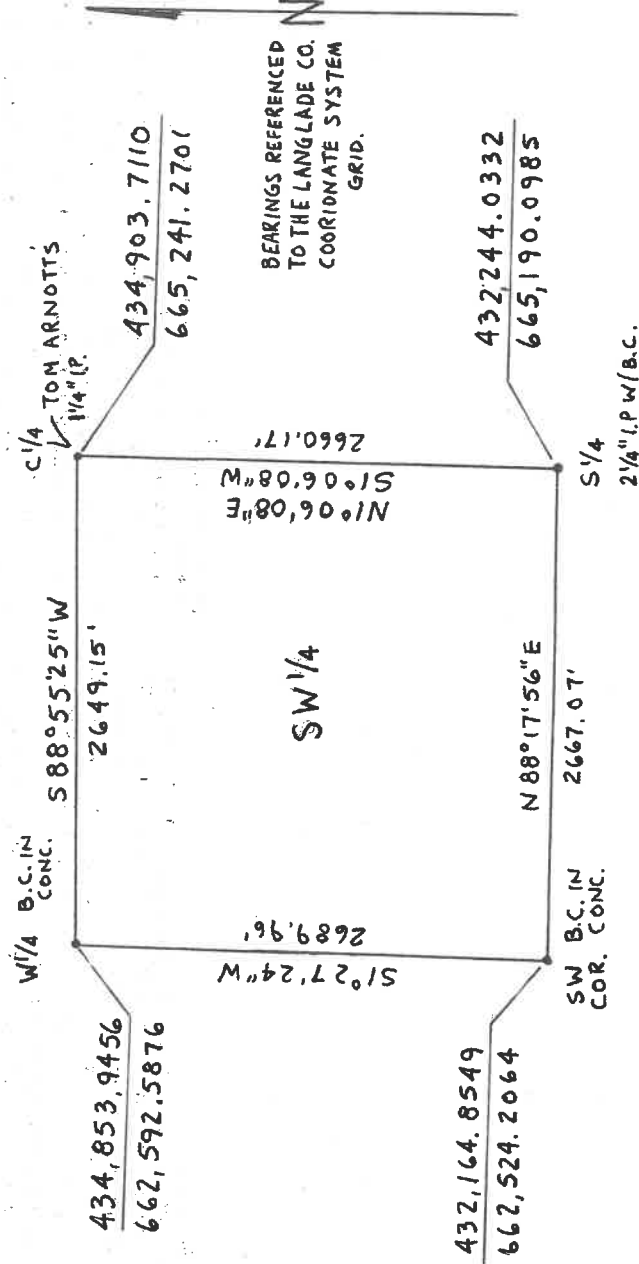
(1) WHEN MONUMENT RECORD REQUIRED. A U.S. public land survey monument shall be prepared and filed with the county surveyor's office as part of any land survey which includes or requires the perpetuation, restoration, reestablishment or use of a U.S. public land survey corner, and,

(a) There is no U.S. public land survey monument record for the corner on file in the office of the county surveyor or the register of deeds for the county in which the corner is located; or,

(b) The land surveyor who performs the survey accepts a location for the U.S. public land survey corner which differs from that shown on a U.S. public land survey monument record filed in the office of the county surveyor or register of deeds for the county in which the corner is located; or,

(c) The witness ties or U.S. public land survey monument reference in an existing U.S. public land survey monument record have been destroyed or disturbed.

(2) FORM REQUIRED. A U.S. public land survey monument record shall be prepared on the board-approved form or on a form substantially the same as the board-approved form which includes all the elements required by this section. A form used for this purpose shall be entitled, "U.S. Public Land Survey Monument Record."



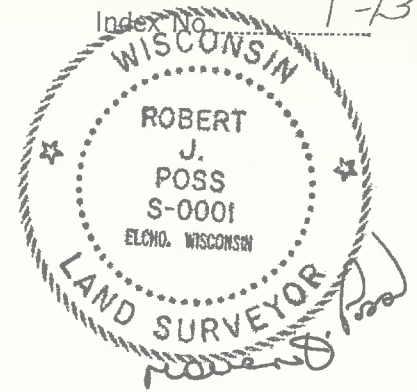
CERTIFIED LAND CORNER RESTORATION

34-12

T-13

State of Wisconsin }  
 County of LANGLADE } ss.

History of original corner establishment:



I, ROBERT J. POSS, do hereby certify that on the 3<sup>RD</sup> day of JUNE, 1968, I found evidence of the 1/4 corner of BETWEEN SECS. 28 & 27 Township 34, North, Range 12 EAST, Fourth, Principal Meridian, as described hereon; and that from this evidence I established a new monument and accessories as described hereon to perpetuate the original location of this corner.

Description of corner evidence found:

FOUND STAKE NEAR ROAD - BUT FOUND HOLE WHERE STAKE HAD BEEN - & PICKET.

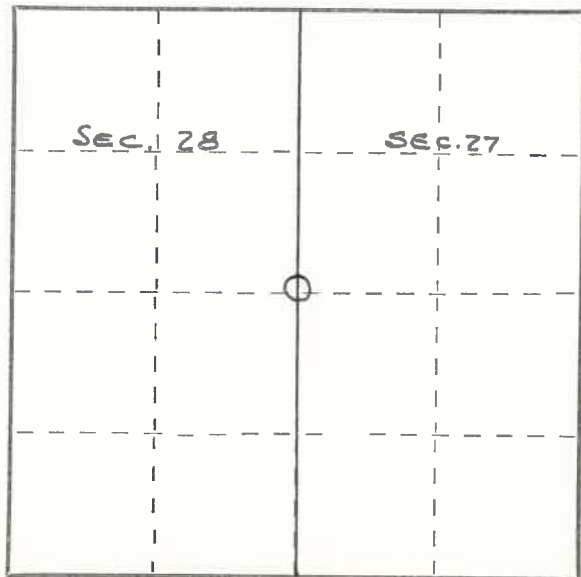
Resident witnesses:

.....  
 .....  
 .....

Description of monument and accessories I established to perpetuate the original location of this corner.

- 1. = W. PINE 8 S 50 1/2 W 31.1
- 2. = W. PINE 8 N 25 1/4 W 20.0
- 3. = W. PINE 10 N 6 1/4 E 35.4
- 4. = SPRUCE 4 N 8 1/2 E 11.2
- 5. = STONE WITH X = 13.4 S 63 1/2 W

⊙ BRASS CAP IN CONC. MKD. 1/4 COR. SEC. 28 | SEC. 27.



Dated at ELCHO, Wis., this 4<sup>TH</sup> day of JUNE, 1968.

Signature Robert J. Poss Title REG. LAND SURVEYOR Registration No. S-1  
 (County Surveyor, Registered Land Surveyor, or other duly authorized official)

Office of Register of Deeds, County of \_\_\_\_\_, I hereby certify that the within instrument was filed in this office for record on the \_\_\_\_\_ day of \_\_\_\_\_, 19\_\_\_\_ at \_\_\_\_\_ o'clock \_\_\_\_\_ M.

(Register of Deeds)

By \_\_\_\_\_ Deputy

⊙ = Corner monument restored.

PLSS field condition report

Date: 4/9/2020 Time of day: 11:00 AM

By: \_\_\_\_\_

Section 28 Town 34 Range 12  
(circle corner location on diagram)

Does the monument appear to be tilted, smashed, uprooted, covered or otherwise damaged by the windstorm?  
YES  NO

Are any bearing trees broken, uprooted, missing or otherwise damaged by the windstorm? YES  NO

*All Bearing Trees in place + marked with Blue Paint*

TAKE PICTURES

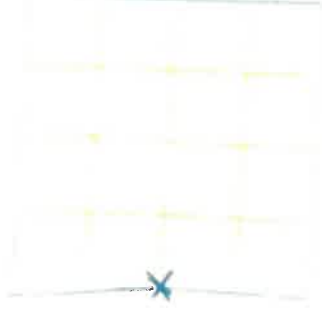
For the first four pictures, do them in this order:

Looking north, looking east, looking south, looking west and, by standing about 6 feet behind the monument, include the monument in each picture.

Then take a picture of the top of the monument, close enough to be able to read what is stamped on the cap. Make sure all pictures are in focus.

T9

North



4341229 2000

T13 34-12

#2