

CERTIFIED LAND CORNER RESTORATION

34-12

Index No. V-13

State of Wisconsin }  
County of LANGRIDE } ss.

I, ROBERT J. POSS, do hereby certify that on the 4<sup>TH</sup> day of JUNE, 1968, I found evidence of the SECTION corner of SECS. 27-28-33-34 Township 34, North, Range 12 EAST, Fourth, Principal Meridian, as described hereon; and that from this evidence I established a new monument and accessories as described hereon to perpetuate the original location of this corner.

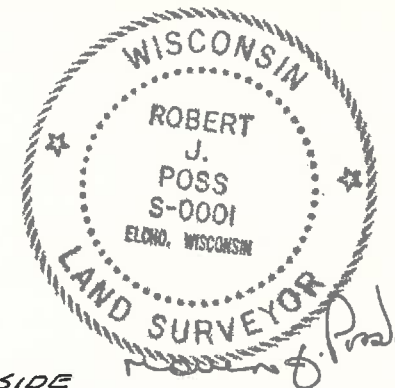
History of original corner establishment:

CR16 J.L. NOWCIN V. PINE 12", N40W 30 TAM, 12" S86E 200

*Blot 104*

ERDICKS 1909 FND O. PINE DOWN & ROTTEN TAM 12 S86E 5TH ED. N. W. MERID. NEW B. PINE 10 S50E 38 B. PINE 10 S67 1/2 W 27 1/2. B. PINE 8 N69 1/2 E 13 3/4

4/15/97 R. J. POSS



Description of corner evidence found:

FOUND Post TO SECS. 27, 28, 33, 34 SET INSIDE OF A 4" IRON PIPE, STAKE MARKED S27 S28 S33 S34.

Resident witnesses:

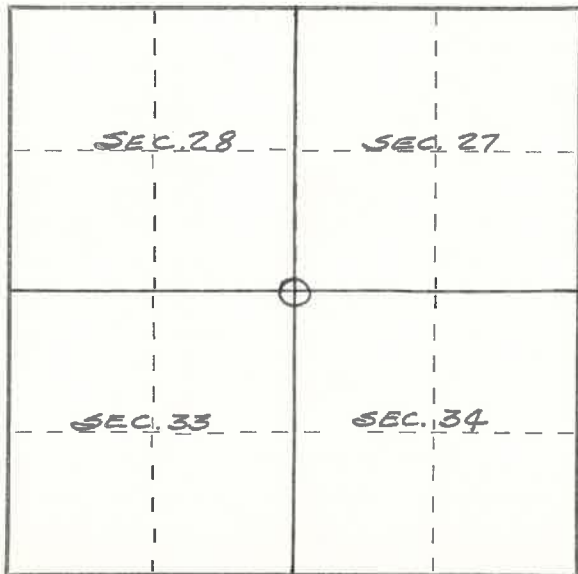
Description of monument and accessories I established to perpetuate the original location of this corner.

① BRASS CAP. IN CONCRETE MKD.

- 1. = J. PINE 8 S89E 23.8
- 2. = PINE STUMP S48 1/2 E 24.0 ('BROOKS')
- 3. = J. PINE 10 S37. E 47.5
- 4. = J. PINE 8 S70 1/4 W 24.7

- ☐ WOOD STAKE IN 4" PIPE, GOOD COND.
- △ BLACK PINE STUMP (BT?)

SEC. COR	
28	27
33	34



○ = Corner monument restored.

Dated at ELCHO, Wis., this 4<sup>TH</sup> day of JUNE, 1968.

Signature Robert J. Poss, Title REG. LAND SURVEYOR Registration No. S-1  
(County Surveyor, Registered Land Surveyor, or other duly authorized official)

Office of Register of Deeds, County of \_\_\_\_\_, I hereby certify that the within instrument was filed in this office for record on the \_\_\_\_\_ day of \_\_\_\_\_, 19\_\_\_\_ at \_\_\_\_\_ o'clock \_\_\_\_\_ M.

(Register of Deeds)

By \_\_\_\_\_ Deputy

PLSS field condition report

Date: 4/22/2020 Time of day: 6:47 Am

By: Cody Blainey

Section 28 Town 34 Range 12  
(circle corner location on diagram)

Does the monument appear to be tilted, smashed, uprooted, covered or otherwise damaged by the windstorm?  
YES  NO

Are any bearing trees broken, uprooted, missing or otherwise damaged by the windstorm? YES  NO   
*and Monument Present from 2006*  
*1 BT Standing #4*

TAKE PICTURES

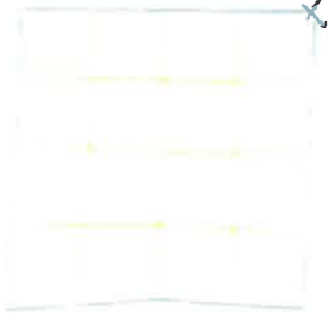
For the first four pictures, do them in this order:

Looking north, looking east, looking south, looking west and, by standing about 6 feet behind the monument, include the monument in each picture.

Then take a picture of the top of the monument, close enough to be able to read what is stamped on the cap. Make sure all pictures are in focus.

*3 PICS of Monument*

North



*4341228 0000*

*V13 34-12*

*V-13*